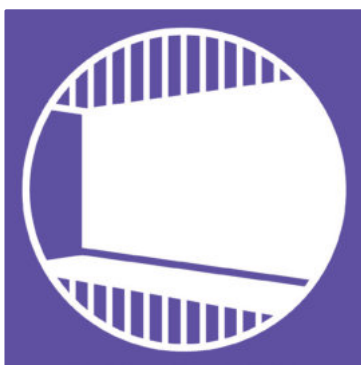


ACCO-
MODA®

Niche
equipment



Space for
ideas



Niches provide room for creativity! As an area in the kitchen, they are so taken for granted, that their functional and aesthetic benefits have long been overlooked. ACCOMODA® makes it easy to make skilful use of this potential. Visual features become a charming focal point, railing or shelving systems create storage options. The kitchen gains new charisma.

Niche rear walls can be used to create boldly colourful, elegant and unobtrusive or nuanced and minimalist eye-catchers. The niche rear wall configurator, accessible free of charge on naber.com, provides freedom for individual design ideas and allows you to use your own picture motifs.

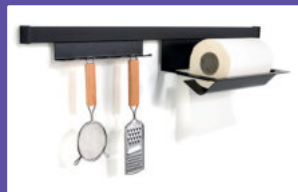
Everything you need close at hand can be arranged on multi-functional railing systems. Extremely flexible wall shelving systems convince with their design and flexible configuration options.

And in the end, it is often the most inconspicuous components that give the kitchen the right finish: for example, precisely placed wall connection profiles. This is how to set the tone!

ACCOMODA

Niche equipment

Perfectly designed and used



■ ACCOMODA® Niche rear walls
The detail completes the kitchen Page 579–622

■ ACCOMODA® Rail and shelf systems
Some solutions are right at hand Page 623–662

■ ACCOMODA® Shelf Support
Concise, but subtly in the background Page 663–670

■ ACCOMODA® Suspended shelf systems
Fixed, versatile and flexible Page 671–674

■ ACCOMODA® Profiles
Secure joints for all corners and edges Page 675–682

ACCOMODA®

Niche rear walls

The detail completes the kitchen



- Niche rear walls
Aluminium composite/
acrylic glass Page 580–611
- Niche rear walls
Spazzolato/Strutturato Page 612–616
- Niche rear walls
Accessories Page 617–622

Niche rear walls

Aluminium composite, acrylic glass

The creative kitchen scene has discovered free surfaces such as backsplash, wall cabinet subdivisions, partitions and dividers for decorative, customised niche rear walls integrated into the kitchen planning. Also in the context of renovations, old tiled surfaces can now show colour with strong motifs or reserved nuances.

PICit® acrylic glass niche rear walls set new highlights in high-quality niche design. They offer brilliant and true colour reproduction of your selected motifs. The light weight, the high break resistance and the individual processing on site, including drill holes and cut-outs, facilitate the planning, transport and installation of this brilliant kitchen highlight. They are precisely fitting, easy to install and durable.

We carry out the entire production to your specifications. Printed on high performance foil, equipped with UV-stable protective laminate, and applied to a sturdy aluminium composite plate, **we guarantee five years colourfastness.**

The imaginative designs of the **PICit®** range and tailored panels in glossy or matt single colours in the **BASICit®** palette magic an individual mood into any kitchen. With **MySCENEit®** we offer the opportunity to create and implement niche rear walls in the personal style of your customers.

PICit® niche rear walls

A fascinating selection of witty and graphically striking motifs in "kitchen art style" makes it easy for you in the consultation to inspire your customers who want to express their lifestyle through casual and creative vitality.

BASICit® niche rear walls

Nuanced colouring is effective everywhere where exclusivity is sought. With a trendy tailored selection of RAL colours available in glossy or matt finish, niche rear walls become harmonious eye-catchers. Naturally, you can also order your niche rear wall in your own preferred colour. In the **BASICit®** range, we offer all the available RAL CLASSIC colours for free selection.

Magnetic niche rear walls (aluminium composite only)

Optionally, all aluminium composite niche rear walls in 3.5 mm and 16 mm thickness can be equipped with a magnetic function. This allows your customers to use the niche rear wall as a sophisticated pin board.



Formats

- Standard format: the designs are formatted at a maximum height of 700 mm/length maximum 3050 mm
- Special formats on request
- Agreement of the image section is required
- **Minimum unit charged 1 m² per commission/order**

Material structure aluminium composite



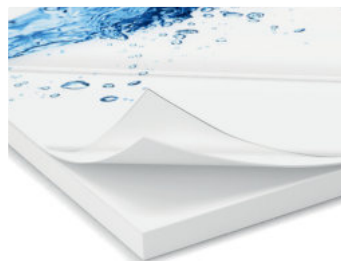
Digital print including UV print protection laminate (wipe clean and splash proof). **Optionally with magnetic foil.**

3.5 mm: aluminium composite plate (heat proof), weight approx. 4 kg/m²

16 mm: 3.5 mm aluminium composite plate (heat proof) on 12.5 mm expanded plastic slab (flame-resistant), weight approx. 10.5 kg/m²

Material structure acrylic glass

Digital print including UV print protection laminate (wipe clean and splash proof).



3.5 mm: 2.5 mm acrylic glass, scratch-resistant coating (HC) (heat proof). Digital printing on the rear of UV pressure protection laminate 1 mm one-sided self-adhesive, full-surface cover, weight approx. 3.97 kg/m²

16 mm: 2.5 mm acrylic glass, scratch-resistant coating (HC) (heat proof). Digital printing on the rear of UV pressure protection laminate 13.5 mm expanded plastic slab (flame-resistant), weight approx. 8.88 kg/m²

Niche rear walls

Aluminium composite, acrylic glass



Installation instructions

- Aluminium composite: Mechanical processing with standard tools for wood and plastic processing.
- Acrylic glass: Mechanical processing with standard tools for wood and plastic processing. For mechanical processing, we recommend using cutting tools at a low speed
- The surface should be dry, dust and grease free before the rear wall is glued on.
- The rear wall can be mounted with standard mirror tape or silicone. Furthermore, we also recommend sealing the edges with silicone.
- **For installation behind hobs, please observe the required minimum distance of 50 mm according to the installation instructions. Furthermore, as additional protection in case of gas hobs, we recommend installing the "Spruzzo" glass splash guard (Catalogue 1 BASICS page 618/24 EN).**
- Cut-outs and corner joints can be performed on site by cutting to mitre.

Cleaning

- Do not clean with cleaning agents which contain solvent.
- Use soft cotton cloths and soapy water without additives.

Accessories for niche rear walls

Accessories such as wall connection profiles, splash protection etc. can be found in Catalogue 1 BASICS from page 617/24 EN.

Configurator

Online at naber.com in the menu option "Service" you will find our free niche rear wall configurator. Here you can edit all the catalogue motifs, as well as your own images and motifs. When using your own image motifs, however, for optimal image quality, a minimum resolution of 8 mega-pixels should be ensured. Your design can be optionally downloaded for free and entered into the planning software. In this way, the proportions are instantly recognisable and can easily be adjusted using the configurator. This helps you and us to optimally design the niche rear wall! If you have any questions, your personal REGIO-TEAM is happy to assist.

Your online advantage

If designed with our configurator, the layout fee does not apply – unless you are using your own images and motifs.

Layout package and notches

The layout package (order no. 8060001) is charged when catalogue motifs need to be mirrored or if part cut-outs need to be retouched, duplicated or supplemented by other motifs. Send us a picture for the **MySCENEit®** rear wall; to have the correction design completed by us, this fee is also charged. The layout package includes two proofs. Notches (order no. 8060002), for example, for extractor hoods, also incur additional fees.

Preparing images, texts and logos

The following image formats are processed: tiff, eps, jpg, pdf in the colour spaces CMYK or RGB. RGB data is converted to CMYK data for printing, which leads to visible colour variations in the respective image. For images up to print format A1 (594 x 841 mm), an image resolution of 300 dpi based on the final format is recommended. For larger final print formats 200 dpi is sufficient. If texts and logos are to be inserted into the design, vectorised data needs to be provided. Please embed fonts into paths in advance.

Organising data delivery

The data can be stored on CD, DVD, and on all popular memory cards and USB flash drives. Larger amounts of data can be conveniently forwarded to us via data upload using one of the many providers on the Internet. Your personal REGIO-TEAM is happy to assist.

Checking the quotation, layout and dimensions

After viewing the photo material, as the client you receive a detailed quotation that includes the cost of the layout package if required (separately charged). At the same time, as an attachment, you receive a non-colour-binding proof copy for checking the proportions and the dimensions. After careful checking of the quotation, please send us the binding order and print release. Alteration requests relating to dimensions, image sections and other design corrections are only possible within 24 hours of the order release. Any changes are calculated with the layout package 8060001.

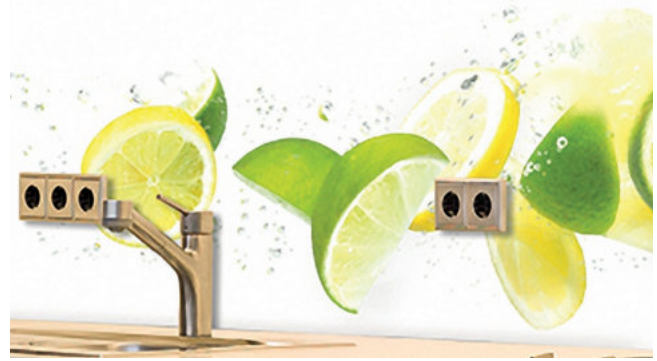
The delivery time is approx. 4 weeks after order release.

Data delivered is subject to a layout package:

Order no.	Item/Description	per pc. excl. VAT
8060001	layout package	97.48 €
8060002	notch	97.48 €

Niche rear walls

MySCENEit®



MySCENEit®: Unique
with the customer's own motifs



Your customer wishes to express his own personal taste when designing a niche rear wall? Offer him all the possibilities to insert his favourite pictures with MySCENEit®. You contribute your expertise in the kitchen studio or directly on site and use the design functions of our free niche rear wall configurator.

With the configurator, it is quite simple to customise the individual motifs to the desired wall size, taking into account cut-outs and holes. In this way, a jointly developed design solution produces a rear wall with a very individual character. A unique item that gives every kitchen a distinctive flair!

We charge a layout fee (8060001) for the format and production-appropriate design implementation, data checking and a maximum of two proofs. Cutting and shaping work (e.g. for extractor hoods and sockets) are charged at an additional fee (8060002).

Prerequisites for the MySCENEit® decoration highlight with that personal touch:

- Accurate on-site measurement
- Maximum of 3 image files can be combined
- File formats: JPG, PDF, TIFF, PSD, PNG and EPS



For formats outside of the width-to-height ratio of 1:4, cut-out consultation is required. The scale shown above is not printed on the niche rear wall.

PiCi® 61

Niche rear wall.

- aluminium composite or acrylic glass plate
- UV pressure protection laminate
- **H max. 700 mm**
- **L max. 3050 mm**
- **special sizes available on request**

8061123	aluminium, 3.5 mm, matt, price per m ²	535.29 €
8061124	aluminium, 3.5 mm, glossy, price per m ²	535.29 €
8062123	aluminium, 16 mm, matt, price per m ²	852.94 €
8062124	aluminium, 16 mm, glossy, price per m ²	852.94 €

8063124	acrylic, 3.5 mm, glossy, price per m ²	907.56 €
8064124	acrylic, 16 mm, glossy, price per m ²	1109.24 €

Optional accessories

8060007	magnetic film, for aluminium, price per m ²	312.61 €
----------------	--	-----------------



For formats outside of the width-to-height ratio of 1:4, cut-out consultation is required. The scale shown above is not printed on the niche rear wall.

PiCi® 74

Niche rear wall.

- aluminium composite or acrylic glass plate
- UV pressure protection laminate
- **H max. 700 mm**
- **L max. 3050 mm**
- **special sizes available on request**

8061149	aluminium, 3.5 mm, matt, price per m ²	535.29 €
8061150	aluminium, 3.5 mm, glossy, price per m ²	535.29 €
8062149	aluminium, 16 mm, matt, price per m ²	852.94 €
8062150	aluminium, 16 mm, glossy, price per m ²	852.94 €

8063150	acrylic, 3.5 mm, glossy, price per m ²	907.56 €
8064150	acrylic, 16 mm, glossy, price per m ²	1109.24 €

Optional accessories

8060007	magnetic film, for aluminium, price per m ²	312.61 €
----------------	--	-----------------



For formats outside of the width-to-height ratio of 1:4, cut-out consultation is required. The scale shown above is not printed on the niche rear wall.

PICi® 60

Niche rear wall.

- aluminium composite or acrylic glass plate
- UV pressure protection laminate
- H max. 700 mm
- L max. 3050 mm
- special sizes available on request

8061121	aluminium, 3.5 mm, matt, price per m ²	535.29 €
---------	---	----------

8061122	aluminium, 3.5 mm, glossy, price per m ²	535.29 €
---------	---	----------

8062121	aluminium, 16 mm, matt, price per m ²	852.94 €
---------	--	----------

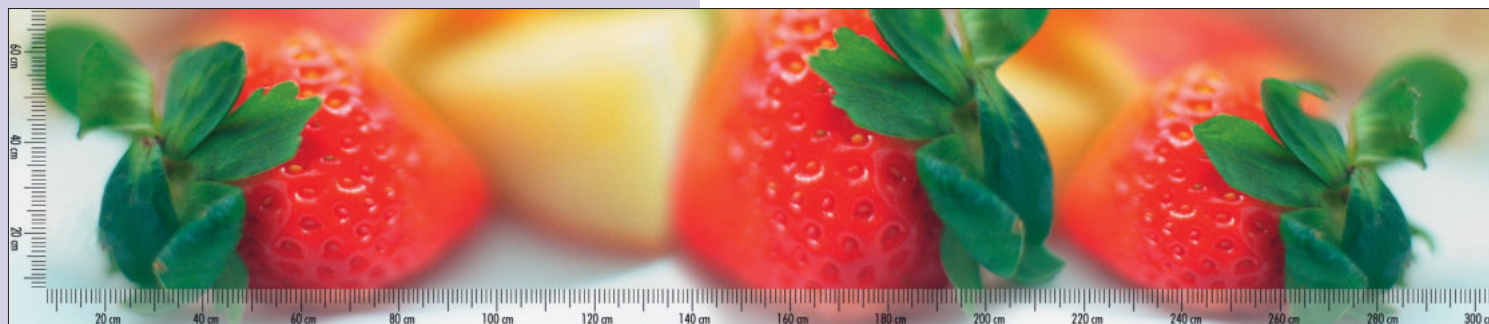
8062122	aluminium, 16 mm, glossy, price per m ²	852.94 €
---------	--	----------

8063122	acrylic, 3.5 mm, glossy, price per m ²	907.56 €
---------	---	----------

8064122	acrylic, 16 mm, glossy, price per m ²	1109.24 €
---------	--	-----------

Optional accessories

8060007	magnetic film, for aluminium, price per m ²	312.61 €
---------	--	----------



For formats outside of the width-to-height ratio of 1:4, cut-out consultation is required. The scale shown above is not printed on the niche rear wall.

PICi® 67

Niche rear wall.

- aluminium composite or acrylic glass plate
- UV pressure protection laminate
- H max. 700 mm
- L max. 3050 mm
- special sizes available on request

8061135	aluminium, 3.5 mm, matt, price per m ²	535.29 €
---------	---	----------

8061136	aluminium, 3.5 mm, glossy, price per m ²	535.29 €
---------	---	----------

8062135	aluminium, 16 mm, matt, price per m ²	852.94 €
---------	--	----------

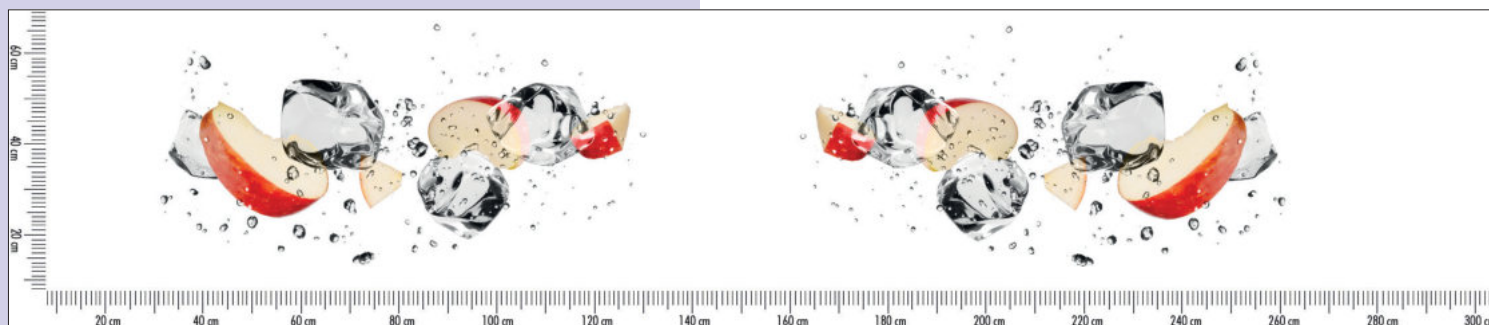
8062136	aluminium, 16 mm, glossy, price per m ²	852.94 €
---------	--	----------

8063136	acrylic, 3.5 mm, glossy, price per m ²	907.56 €
---------	---	----------

8064136	acrylic, 16 mm, glossy, price per m ²	1109.24 €
---------	--	-----------

Optional accessories

8060007	magnetic film, for aluminium, price per m ²	312.61 €
---------	--	----------



Note:

Individual designs can be freely selected, combined and positioned. Many other individual designs can be found in one of the many Internet media libraries such as Fotolia. The scale shown above is not printed on the niche rear wall.

For this motif, a layout flat rate has to be charged for changes.

For more information, see page 580–582/24 EN.

PICi® 84

Niche rear wall.

- aluminium composite or acrylic glass plate
- UV pressure protection laminate
- H max. 700 mm
- L max. 3050 mm
- special sizes available on request

8061170 aluminium, 3.5 mm, matt, price per m² 535.29 €

8061171 aluminium, 3.5 mm, glossy, price per m² 535.29 €

8062170 aluminium, 16 mm, matt, price per m² 852.94 €

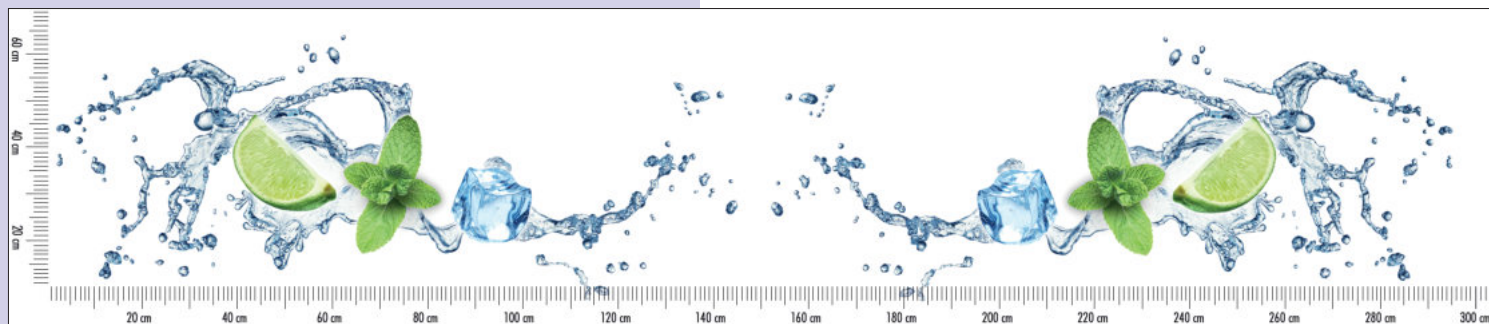
8062171 aluminium, 16 mm, glossy, price per m² 852.94 €

8063171 acrylic, 3.5 mm, glossy, price per m² 907.56 €

8064171 acrylic, 16 mm, glossy, price per m² 1109.24 €

Optional accessories

8060007 magnetic film, for aluminium, price per m² 312.61 €



Note:

Individual designs can be freely selected, combined and positioned. Many other individual designs can be found in one of the many Internet media libraries such as Fotolia. The scale shown above is not printed on the niche rear wall.

For this motif, a layout flat rate has to be charged for changes.

For more information, see page 580–582/24 EN.

PICi® 86

Niche rear wall.

- aluminium composite or acrylic glass plate
- UV pressure protection laminate
- H max. 700 mm
- L max. 3050 mm
- special sizes available on request

8061174 aluminium, 3.5 mm, matt, price per m² 535.29 €

8061175 aluminium, 3.5 mm, glossy, price per m² 535.29 €

8062174 aluminium, 16 mm, matt, price per m² 852.94 €

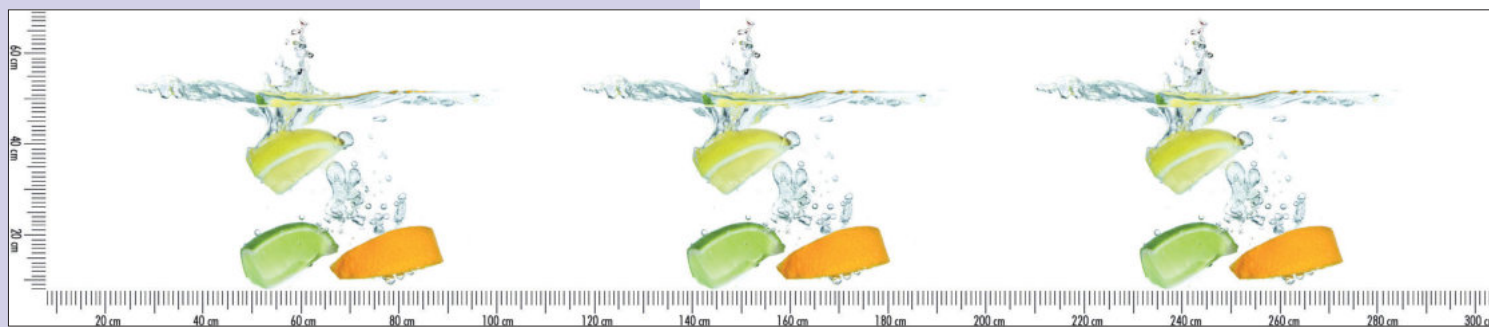
8062175 aluminium, 16 mm, glossy, price per m² 852.94 €

8063175 acrylic, 3.5 mm, glossy, price per m² 907.56 €

8064175 acrylic, 16 mm, glossy, price per m² 1109.24 €

Optional accessories

8060007 magnetic film, for aluminium, price per m² 312.61 €



Note:

Individual designs can be freely selected, combined and positioned. Many other individual designs can be found in one of the many Internet media libraries such as Fotolia. The scale shown above is not printed on the niche rear wall.

For this motif, a layout flat rate has to be charged for changes.

For more information, see page 580–582/24 EN.

PiCi® 89

Niche rear wall.

- aluminium composite or acrylic glass plate
- UV pressure protection laminate
- **H max. 700 mm**
- **L max. 3050 mm**
- **special sizes available on request**

8061180 aluminium, 3.5 mm, matt, price per m² **535.29 €**

8061181 aluminium, 3.5 mm, glossy, price per m² **535.29 €**

8062180 aluminium, 16 mm, matt, price per m² **852.94 €**

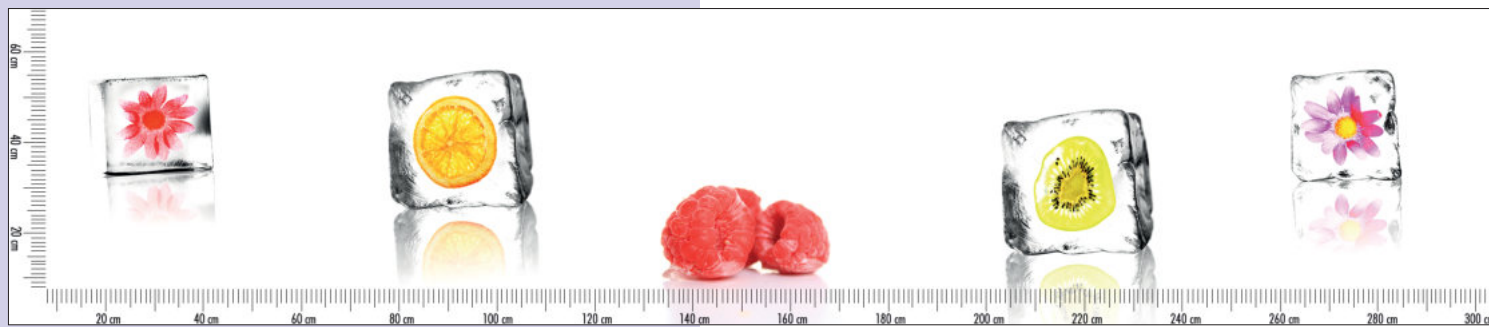
8062181 aluminium, 16 mm, glossy, price per m² **852.94 €**

8063181 acrylic, 3.5 mm, glossy, price per m² **907.56 €**

8064181 acrylic, 16 mm, glossy, price per m² **1109.24 €**

Optional accessories

8060007 magnetic film, for aluminium, price per m² **312.61 €**



For formats outside of the width-to-height ratio of 1:4, cut-out consultation is required. The scale shown above is not printed on the niche rear wall.

PiCi® 104

Niche rear wall.

- aluminium composite or acrylic glass plate
- UV pressure protection laminate
- **H max. 700 mm**
- **L max. 3050 mm**
- **special sizes available on request**

8061210 aluminium, 3.5 mm, matt, price per m² **535.29 €**

8061211 aluminium, 3.5 mm, glossy, price per m² **535.29 €**

8062210 aluminium, 16 mm, matt, price per m² **852.94 €**

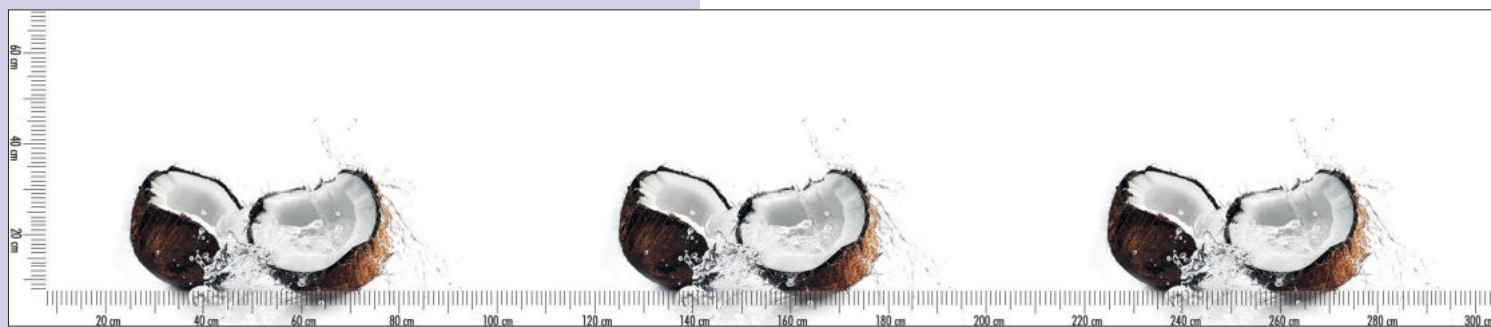
8062211 aluminium, 16 mm, glossy, price per m² **852.94 €**

8063211 acrylic, 3.5 mm, glossy, price per m² **907.56 €**

8064211 acrylic, 16 mm, glossy, price per m² **1109.24 €**

Optional accessories

8060007 magnetic film, for aluminium, price per m² **312.61 €**



Note:

Individual designs can be freely selected, combined and positioned. Many other individual designs can be found in one of the many Internet media libraries such as Fotolia. The scale shown above is not printed on the niche rear wall.

For this motif, a layout flat rate has to be charged for changes.

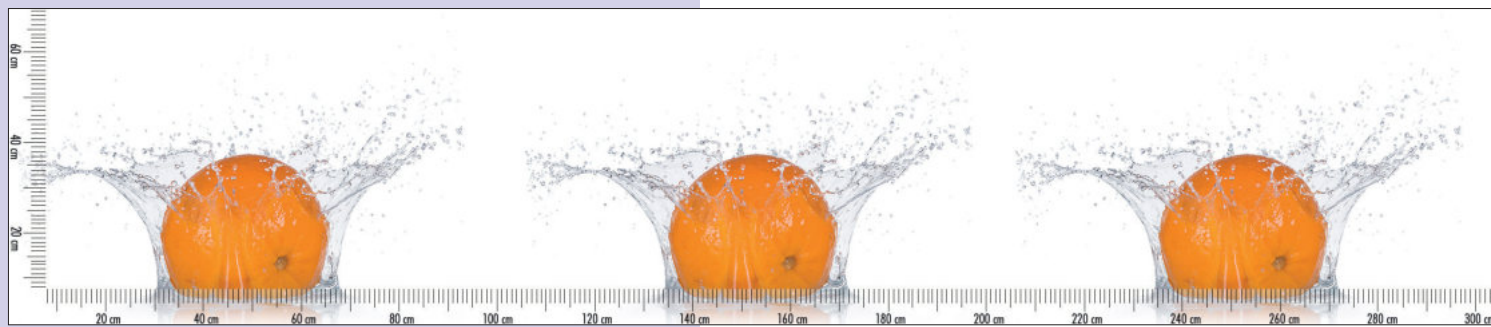
For more information, see page 580–582/24 EN.

PICi® 105

Niche rear wall.

- aluminium composite or acrylic glass plate
- UV pressure protection laminate
- H max. 700 mm
- L max. 3050 mm
- special sizes available on request

8061212	aluminium, 3.5 mm, matt, price per m ²	535.29 €
8061213	aluminium, 3.5 mm, glossy, price per m ²	535.29 €
8062212	aluminium, 16 mm, matt, price per m ²	852.94 €
8062213	aluminium, 16 mm, glossy, price per m ²	852.94 €
8063213	acrylic, 3.5 mm, glossy, price per m ²	907.56 €
8064213	acrylic, 16 mm, glossy, price per m ²	1109.24 €
Optional accessories		
8060007	magnetic film, for aluminium, price per m ²	312.61 €



Note:

Individual designs can be freely selected, combined and positioned. Many other individual designs can be found in one of the many Internet media libraries such as Fotolia. The scale shown above is not printed on the niche rear wall.

For this motif, a layout flat rate has to be charged for changes.

For more information, see page 580–582/24 EN.

PICi® 106

Niche rear wall.

- aluminium composite or acrylic glass plate
- UV pressure protection laminate
- H max. 700 mm
- L max. 3050 mm
- special sizes available on request

8061214	aluminium, 3.5 mm, matt, price per m ²	535.29 €
8061215	aluminium, 3.5 mm, glossy, price per m ²	535.29 €
8062214	aluminium, 16 mm, matt, price per m ²	852.94 €
8062215	aluminium, 16 mm, glossy, price per m ²	852.94 €
8063215	acrylic, 3.5 mm, glossy, price per m ²	907.56 €
8064215	acrylic, 16 mm, glossy, price per m ²	1109.24 €
Optional accessories		
8060007	magnetic film, for aluminium, price per m ²	312.61 €



Note:

Individual designs can be freely selected, combined and positioned. Many other individual designs can be found in one of the many Internet media libraries such as Fotolia. The scale shown above is not printed on the niche rear wall.

For this motif, a layout flat rate has to be charged for changes.

For more information, see page 580–582/24 EN.

PiCi® 90

Niche rear wall.

- aluminium composite or acrylic glass plate
- UV pressure protection laminate
- **H max. 700 mm**
- **L max. 3050 mm**
- **special sizes available on request**

8061182 aluminium, 3.5 mm, matt, price per m² **535.29 €**

8061183 aluminium, 3.5 mm, glossy, price per m² **535.29 €**

8062182 aluminium, 16 mm, matt, price per m² **852.94 €**

8062183 aluminium, 16 mm, glossy, price per m² **852.94 €**

8063183 acrylic, 3.5 mm, glossy, price per m² **907.56 €**

8064183 acrylic, 16 mm, glossy, price per m² **1109.24 €**

Optional accessories

8060007 magnetic film, for aluminium, price per m² **312.61 €**



For formats outside of the width-to-height ratio of 1:4, cut-out consultation is required. The scale shown above is not printed on the niche rear wall.

PiCi® 66

Niche rear wall.

- aluminium composite or acrylic glass plate
- UV pressure protection laminate
- **H max. 700 mm**
- **L max. 3050 mm**
- **special sizes available on request**

8061133 aluminium, 3.5 mm, matt, price per m² **535.29 €**

8061134 aluminium, 3.5 mm, glossy, price per m² **535.29 €**

8062133 aluminium, 16 mm, matt, price per m² **852.94 €**

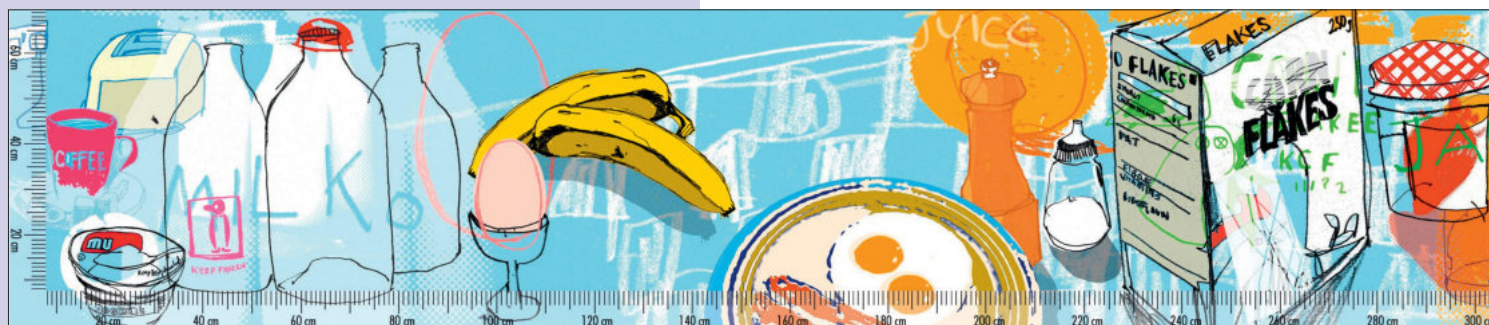
8062134 aluminium, 16 mm, glossy, price per m² **852.94 €**

8063134 acrylic, 3.5 mm, glossy, price per m² **907.56 €**

8064134 acrylic, 16 mm, glossy, price per m² **1109.24 €**

Optional accessories

8060007 magnetic film, for aluminium, price per m² **312.61 €**



For formats outside of the width-to-height ratio of 1:4, cut-out consultation is required. The scale shown above is not printed on the niche rear wall.

PiCi® 77

- Niche rear wall.
 – aluminium composite or acrylic glass plate
 – UV pressure protection laminate
 – H max. 700 mm
 – L max. 3050 mm
 – special sizes available on request

8061155	aluminium, 3.5 mm, matt, price per m ²	535.29 €
8061156	aluminium, 3.5 mm, glossy, price per m ²	535.29 €
8062155	aluminium, 16 mm, matt, price per m ²	852.94 €
8062156	aluminium, 16 mm, glossy, price per m ²	852.94 €
8063156	acrylic, 3.5 mm, glossy, price per m ²	907.56 €
8064156	acrylic, 16 mm, glossy, price per m ²	1109.24 €
Optional accessories		
8060007	magnetic film, for aluminium, price per m ²	312.61 €

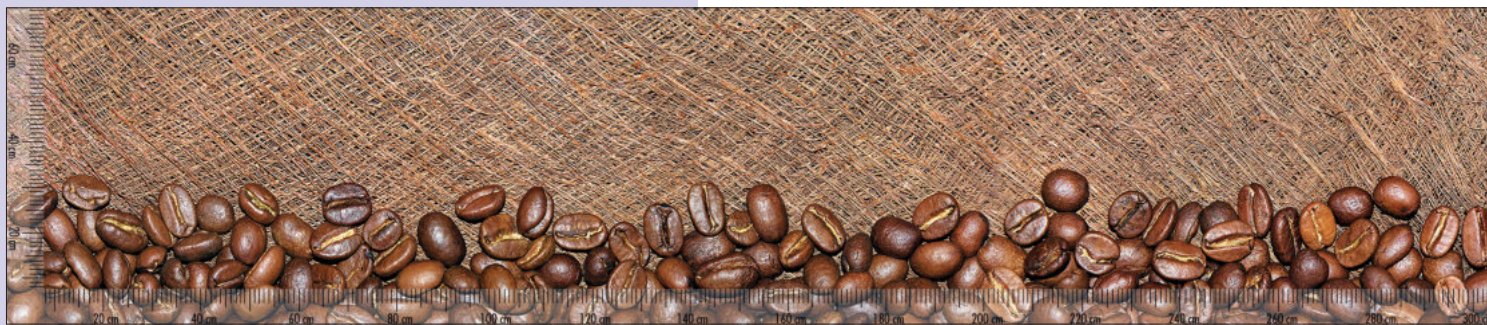


For formats outside of the width-to-height ratio of 1:4, cut-out consultation is required. The scale shown above is not printed on the niche rear wall.

PiCi® 91

- Niche rear wall.
 – aluminium composite or acrylic glass plate
 – UV pressure protection laminate
 – H max. 700 mm
 – L max. 3050 mm
 – special sizes available on request

8061184	aluminium, 3.5 mm, matt, price per m ²	535.29 €
8061185	aluminium, 3.5 mm, glossy, price per m ²	535.29 €
8062184	aluminium, 16 mm, matt, price per m ²	852.94 €
8062185	aluminium, 16 mm, glossy, price per m ²	852.94 €
8063185	acrylic, 3.5 mm, glossy, price per m ²	907.56 €
8064185	acrylic, 16 mm, glossy, price per m ²	1109.24 €
Optional accessories		
8060007	magnetic film, for aluminium, price per m ²	312.61 €



For formats outside of the width-to-height ratio of 1:4, cut-out consultation is required. The scale shown above is not printed on the niche rear wall.

PICi® 92

- Niche rear wall.
- aluminium composite or acrylic glass plate
 - UV pressure protection laminate
 - H max. 700 mm
 - L max. 3050 mm
 - special sizes available on request

8061186	aluminium, 3.5 mm, matt, price per m ²	535.29 €
8061187	aluminium, 3.5 mm, glossy, price per m ²	535.29 €
8062186	aluminium, 16 mm, matt, price per m ²	852.94 €
8062187	aluminium, 16 mm, glossy, price per m ²	852.94 €
<hr/>		
8063187	acrylic, 3.5 mm, glossy, price per m ²	907.56 €
8064187	acrylic, 16 mm, glossy, price per m ²	1109.24 €
<hr/>		
Optional accessories		
8060007	magnetic film, for aluminium, price per m ²	312.61 €



Note:

Individual designs can be freely selected, combined and positioned. Many other individual designs can be found in one of the many Internet media libraries such as Fotolia. The scale shown above is not printed on the niche rear wall.

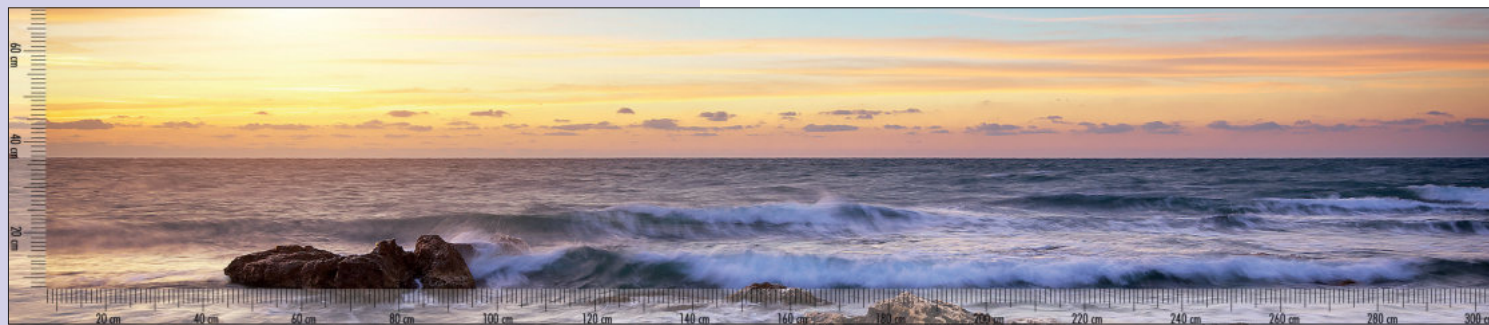
For this motif, a layout flat rate has to be charged for changes.

For more information, see page 580–582/24 EN.

PICi® 107

- Niche rear wall.
- aluminium composite or acrylic glass plate
 - UV pressure protection laminate
 - H max. 700 mm
 - L max. 3050 mm
 - special sizes available on request

8061216	aluminium, 3.5 mm, matt, price per m ²	535.29 €
8061217	aluminium, 3.5 mm, glossy, price per m ²	535.29 €
8062216	aluminium, 16 mm, matt, price per m ²	852.94 €
8062217	aluminium, 16 mm, glossy, price per m ²	852.94 €
<hr/>		
8063217	acrylic, 3.5 mm, glossy, price per m ²	907.56 €
8064217	acrylic, 16 mm, glossy, price per m ²	1109.24 €
<hr/>		
Optional accessories		
8060007	magnetic film, for aluminium, price per m ²	312.61 €



For formats outside of the width-to-height ratio of 1:4, cut-out consultation is required. The scale shown above is not printed on the niche rear wall.

PICi® 108

Niche rear wall.

- aluminium composite or acrylic glass plate
- UV pressure protection laminate
- **H max. 700 mm**
- **L max. 3050 mm**
- **special sizes available on request**

8061232	aluminium, 3.5 mm, matt, price per m ²	535.29 €
8061233	aluminium, 3.5 mm, glossy, price per m ²	535.29 €
8062232	aluminium, 16 mm, matt, price per m ²	852.94 €
8062233	aluminium, 16 mm, glossy, price per m ²	852.94 €
<hr/>		
8063233	acrylic, 3.5 mm, glossy, price per m ²	907.56 €
8064233	acrylic, 16 mm, glossy, price per m ²	1109.24 €
<hr/>		
Optional accessories		
8060007	magnetic film, for aluminium, price per m ²	312.61 €



For formats outside of the width-to-height ratio of 1:4, cut-out consultation is required. The scale shown above is not printed on the niche rear wall.

PICi® 78

Niche rear wall.

- aluminium composite or acrylic glass plate
- UV pressure protection laminate
- **H max. 700 mm**
- **L max. 3050 mm**
- **special sizes available on request**

8061157	aluminium, 3.5 mm, matt, price per m ²	535.29 €
8061158	aluminium, 3.5 mm, glossy, price per m ²	535.29 €
8062157	aluminium, 16 mm, matt, price per m ²	852.94 €
8062158	aluminium, 16 mm, glossy, price per m ²	852.94 €
<hr/>		
8063158	acrylic, 3.5 mm, glossy, price per m ²	907.56 €
8064158	acrylic, 16 mm, glossy, price per m ²	1109.24 €
<hr/>		
Optional accessories		
8060007	magnetic film, for aluminium, price per m ²	312.61 €

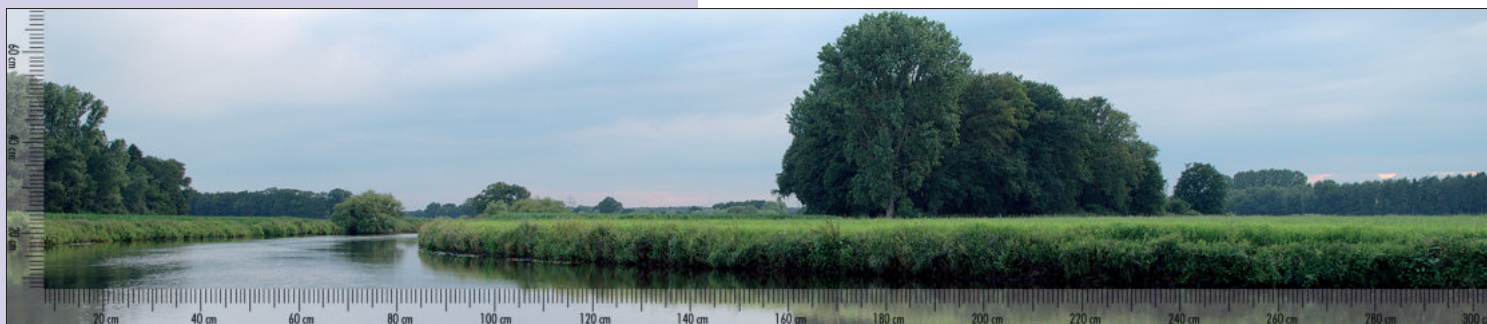


For formats outside of the width-to-height ratio of 1:4, cut-out consultation is required. The scale shown above is not printed on the niche rear wall.

PiCi® 8

- Niche rear wall.
- aluminium composite or acrylic glass plate
 - UV pressure protection laminate
 - **H max. 700 mm**
 - **L max. 3050 mm**
 - **special sizes available on request**

8061015	aluminium, 3.5 mm, matt, price per m ²	535.29 €
8061016	aluminium, 3.5 mm, glossy, price per m ²	535.29 €
8062015	aluminium, 16 mm, matt, price per m ²	852.94 €
8062016	aluminium, 16 mm, glossy, price per m ²	852.94 €
8063016	acrylic, 3.5 mm, glossy, price per m ²	907.56 €
8064016	acrylic, 16 mm, glossy, price per m ²	1109.24 €
Optional accessories		
8060007	magnetic film, for aluminium, price per m ²	312.61 €



For formats outside of the width-to-height ratio of 1:4, cut-out consultation is required. The scale shown above is not printed on the niche rear wall.

PiCi® 11

- Niche rear wall.
- aluminium composite or acrylic glass plate
 - UV pressure protection laminate
 - **H max. 700 mm**
 - **L max. 3050 mm**
 - **special sizes available on request**

8061021	aluminium, 3.5 mm, matt, price per m ²	535.29 €
8061022	aluminium, 3.5 mm, glossy, price per m ²	535.29 €
8062021	aluminium, 16 mm, matt, price per m ²	852.94 €
8062022	aluminium, 16 mm, glossy, price per m ²	852.94 €
8063022	acrylic, 3.5 mm, glossy, price per m ²	907.56 €
8064022	acrylic, 16 mm, glossy, price per m ²	1109.24 €
Optional accessories		
8060007	magnetic film, for aluminium, price per m ²	312.61 €



For formats outside of the width-to-height ratio of 1:4, cut-out consultation is required. The scale shown above is not printed on the niche rear wall.

PICi® 7

Niche rear wall.

- aluminium composite or acrylic glass plate
- UV pressure protection laminate
- **H max. 700 mm**
- **L max. 3050 mm**
- **special sizes available on request**

8061013 aluminium, 3.5 mm, matt, price per m ²	535.29 €
--	-----------------

8061014 aluminium, 3.5 mm, glossy, price per m ²	535.29 €
--	-----------------

8062013 aluminium, 16 mm, matt, price per m ²	852.94 €
---	-----------------

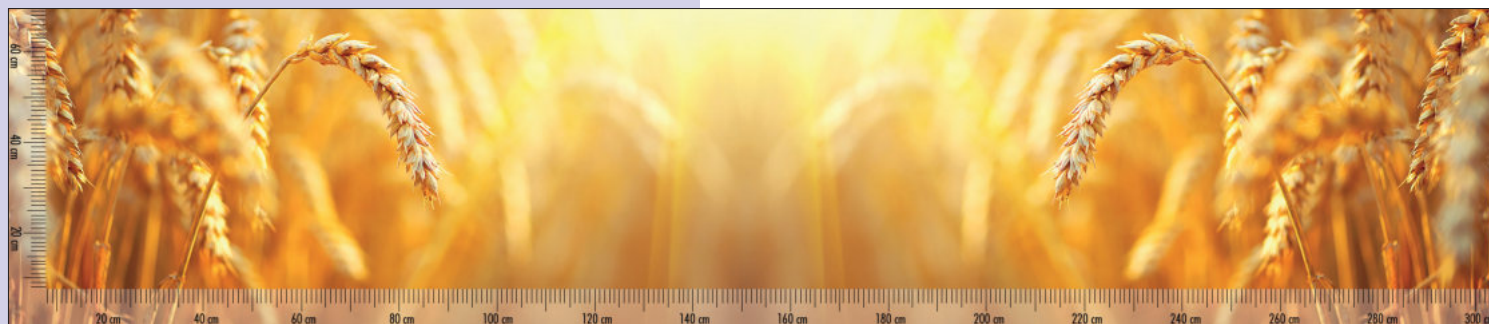
8062014 aluminium, 16 mm, glossy, price per m ²	852.94 €
---	-----------------

8063014 acrylic, 3.5 mm, glossy, price per m ²	907.56 €
--	-----------------

8064014 acrylic, 16 mm, glossy, price per m ²	1109.24 €
---	------------------

Optional accessories

8060007 magnetic film, for aluminium, price per m ²	312.61 €
---	-----------------



For formats outside of the width-to-height ratio of 1:4, cut-out consultation is required. The scale shown above is not printed on the niche rear wall.

PICi® 110

Niche rear wall.

- aluminium composite or acrylic glass plate
- UV pressure protection laminate
- **H max. 700 mm**
- **L max. 3050 mm**
- **special sizes available on request**

8061220 aluminium, 3.5 mm, matt, price per m ²	535.29 €
--	-----------------

8061221 aluminium, 3.5 mm, glossy, price per m ²	535.29 €
--	-----------------

8062220 aluminium, 16 mm, matt, price per m ²	852.94 €
---	-----------------

8062221 aluminium, 16 mm, glossy, price per m ²	852.94 €
---	-----------------

8063221 acrylic, 3.5 mm, glossy, price per m ²	907.56 €
--	-----------------

8064221 acrylic, 16 mm, glossy, price per m ²	1109.24 €
---	------------------

Optional accessories

8060007 magnetic film, for aluminium, price per m ²	312.61 €
---	-----------------



For formats outside of the width-to-height ratio of 1:4, cut-out consultation is required. The scale shown above is not printed on the niche rear wall.

PICi® 109

Niche rear wall.

- aluminium composite or acrylic glass plate
- UV pressure protection laminate
- **H max. 700 mm**
- **L max. 3050 mm**
- **special sizes available on request**

8061218 aluminium, 3.5 mm, matt, price per m² **535.29 €**

8061219 aluminium, 3.5 mm, glossy, price per m² **535.29 €**

8062218 aluminium, 16 mm, matt, price per m² **852.94 €**

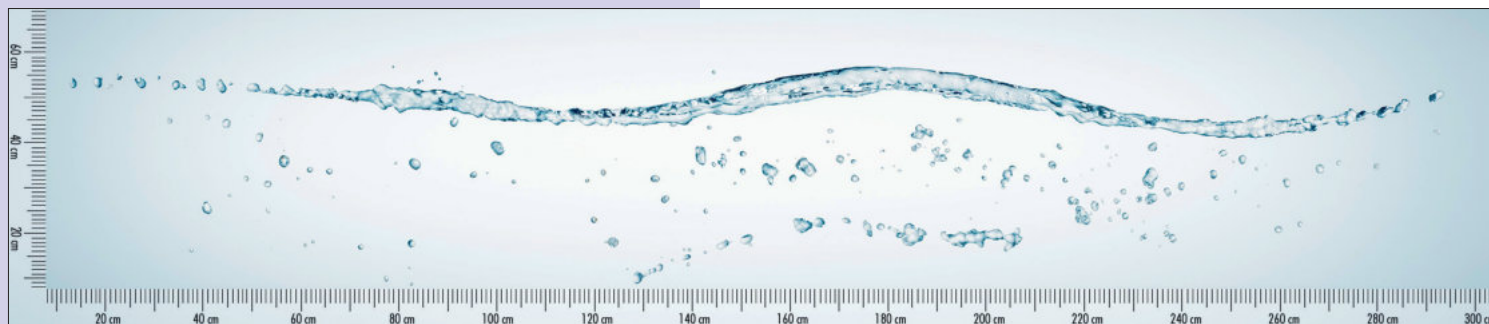
8062219 aluminium, 16 mm, glossy, price per m² **852.94 €**

8063219 acrylic, 3.5 mm, glossy, price per m² **907.56 €**

8064219 acrylic, 16 mm, glossy, price per m² **1109.24 €**

Optional accessories

8060007 magnetic film, for aluminium, price per m² **312.61 €**



For formats outside of the width-to-height ratio of 1:4, cut-out consultation is required. The scale shown above is not printed on the niche rear wall.

PICi® 75

Niche rear wall.

- aluminium composite or acrylic glass plate
- UV pressure protection laminate
- **H max. 700 mm**
- **L max. 3050 mm**
- **special sizes available on request**

8061151 aluminium, 3.5 mm, matt, price per m² **535.29 €**

8061152 aluminium, 3.5 mm, glossy, price per m² **535.29 €**

8062151 Aluminium, 16 mm, matt, price per m² **852.94 €**

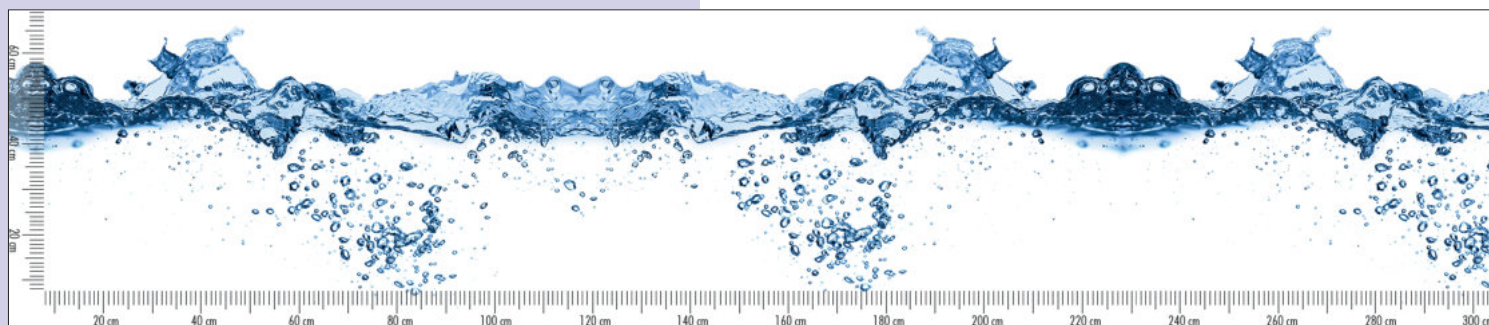
8062152 aluminium, 16 mm, glossy, price per m² **852.94 €**

8063152 acrylic, 3.5 mm, glossy, price per m² **907.56 €**

8064152 acrylic, 16 mm, glossy, price per m² **1109.24 €**

Optional accessories

8060007 magnetic film, for aluminium, price per m² **312.61 €**



For formats outside of the width-to-height ratio of 1:4, cut-out consultation is required. The scale shown above is not printed on the niche rear wall.

PICi® 102

Niche rear wall.

- aluminium composite or acrylic glass plate
- UV pressure protection laminate
- H max. 700 mm
- L max. 3050 mm
- special sizes available on request

8061206	aluminium, 3.5 mm, matt, price per m ²	535.29 €
---------	---	----------

8061207	aluminium, 3.5 mm, glossy, price per m ²	535.29 €
---------	---	----------

8062206	aluminium, 16 mm, matt, price per m ²	852.94 €
---------	--	----------

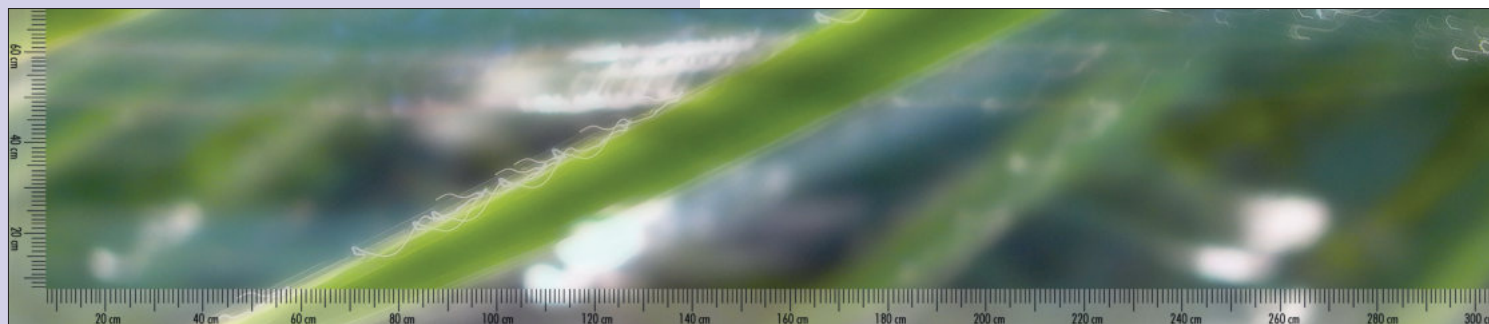
8062207	aluminium, 16 mm, glossy, price per m ²	852.94 €
---------	--	----------

8063207	acrylic, 3.5 mm, glossy, price per m ²	907.56 €
---------	---	----------

8064207	acrylic, 16 mm, glossy, price per m ²	1109.24 €
---------	--	-----------

Optional accessories

8060007	magnetic film, for aluminium, price per m ²	312.61 €
---------	--	----------



For formats outside of the width-to-height ratio of 1:4, cut-out consultation is required. The scale shown above is not printed on the niche rear wall.

PICi® 14

Niche rear wall.

- aluminium composite or acrylic glass plate
- UV pressure protection laminate
- H max. 700 mm
- L max. 3050 mm
- special sizes available on request

8061027	aluminium, 3.5 mm, matt, price per m ²	535.29 €
---------	---	----------

8061028	aluminium, 3.5 mm, glossy, price per m ²	535.29 €
---------	---	----------

8062027	aluminium, 16 mm, matt, price per m ²	852.94 €
---------	--	----------

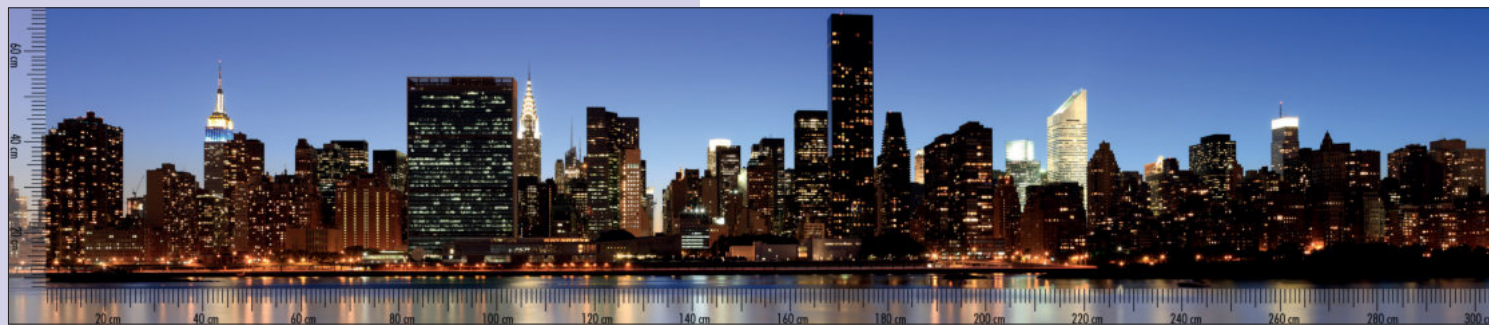
8062028	aluminium, 16 mm, glossy, price per m ²	852.94 €
---------	--	----------

8063028	acrylic, 3.5 mm, glossy, price per m ²	907.56 €
---------	---	----------

8064028	acrylic, 16 mm, glossy, price per m ²	1109.24 €
---------	--	-----------

Optional accessories

8060007	magnetic film, for aluminium, price per m ²	312.61 €
---------	--	----------



For formats outside of the width-to-height ratio of 1:4, cut-out consultation is required. The scale shown above is not printed on the niche rear wall.

PICi® 76

Niche rear wall.

- aluminium composite or acrylic glass plate
- UV pressure protection laminate
- H max. 700 mm
- L max. 3050 mm
- special sizes available on request

8061153	aluminium, 3.5 mm, matt, price per m ²	535.29 €
8061154	aluminium, 3.5 mm, glossy, price per m ²	535.29 €
8062153	aluminium, 16 mm, matt, price per m ²	852.94 €
8062154	aluminium, 16 mm, glossy, price per m ²	852.94 €
<hr/>		
8063154	acrylic, 3.5 mm, glossy, price per m ²	907.56 €
8064154	acrylic, 16 mm, glossy, price per m ²	1109.24 €
<hr/>		
Optional accessories		
8060007	magnetic film, for aluminium, price per m ²	312.61 €



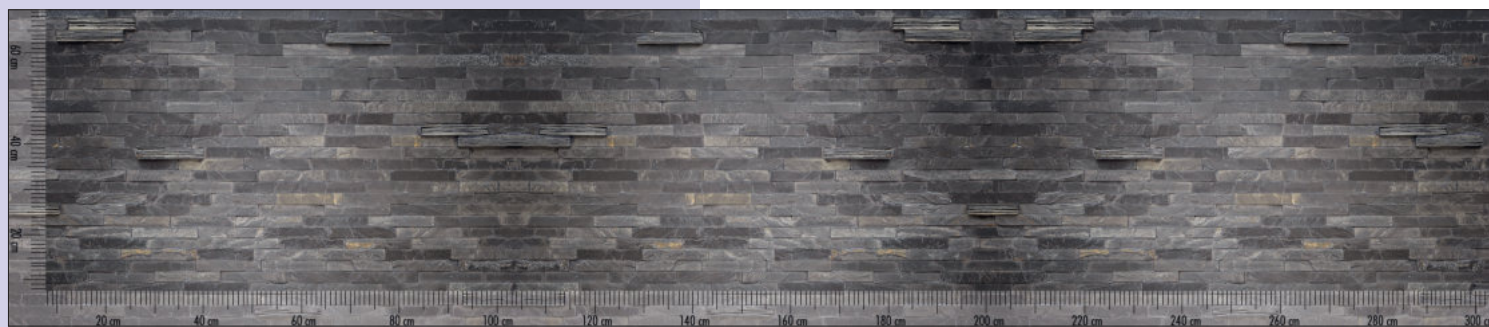
For formats outside of the width-to-height ratio of 1:4, cut-out consultation is required. The scale shown above is not printed on the niche rear wall.

PICi® 93

Niche rear wall.

- aluminium composite or acrylic glass plate
- UV pressure protection laminate
- H max. 700 mm
- L max. 3050 mm
- special sizes available on request

8061188	aluminium, 3.5 mm, matt, price per m ²	535.29 €
8061189	aluminium, 3.5 mm, glossy, price per m ²	535.29 €
8062188	aluminium, 16 mm, matt, price per m ²	852.94 €
8062189	aluminium, 16 mm, glossy, price per m ²	852.94 €
<hr/>		
8063189	acrylic, 3.5 mm, glossy, price per m ²	907.56 €
8064189	acrylic, 16 mm, glossy, price per m ²	1109.24 €
<hr/>		
Optional accessories		
8060007	magnetic film, for aluminium, price per m ²	312.61 €



For formats outside of the width-to-height ratio of 1:4, cut-out consultation is required. The scale shown above is not printed on the niche rear wall.

PICi® 114

Niche rear wall.

- aluminium composite or acrylic glass plate
- UV pressure protection laminate
- **H max. 700 mm**
- **L max. 3050 mm**
- **special sizes available on request**

8061226	aluminium, 3.5 mm, matt, price per m ²	535.29 €
8061227	aluminium, 3.5 mm, glossy, price per m ²	535.29 €
8062226	aluminium, 16 mm, matt, price per m ²	852.94 €
8062227	aluminium, 16 mm, glossy, price per m ²	852.94 €
<hr/>		
8063227	acrylic, 3.5 mm, glossy, price per m ²	907.56 €
8064227	acrylic, 16 mm, glossy, price per m ²	1109.24 €
<hr/>		
Optional accessories		
8060007	magnetic film, for aluminium, price per m ²	312.61 €



For formats outside of the width-to-height ratio of 1:4, cut-out consultation is required. The scale shown above is not printed on the niche rear wall.

PICi® 115

Niche rear wall.

- aluminium composite or acrylic glass plate
- UV pressure protection laminate
- **H max. 700 mm**
- **L max. 3050 mm**
- **special sizes available on request**

8061228	aluminium, 3.5 mm, matt, price per m ²	535.29 €
8061229	aluminium, 3.5 mm, glossy, price per m ²	535.29 €
8062228	aluminium, 16 mm, matt, price per m ²	852.94 €
8062229	aluminium, 16 mm, glossy, price per m ²	852.94 €
<hr/>		
8063229	acrylic, 3.5 mm, glossy, price per m ²	907.56 €
8064229	acrylic, 16 mm, glossy, price per m ²	1109.24 €
<hr/>		
Optional accessories		
8060007	magnetic film, for aluminium, price per m ²	312.61 €

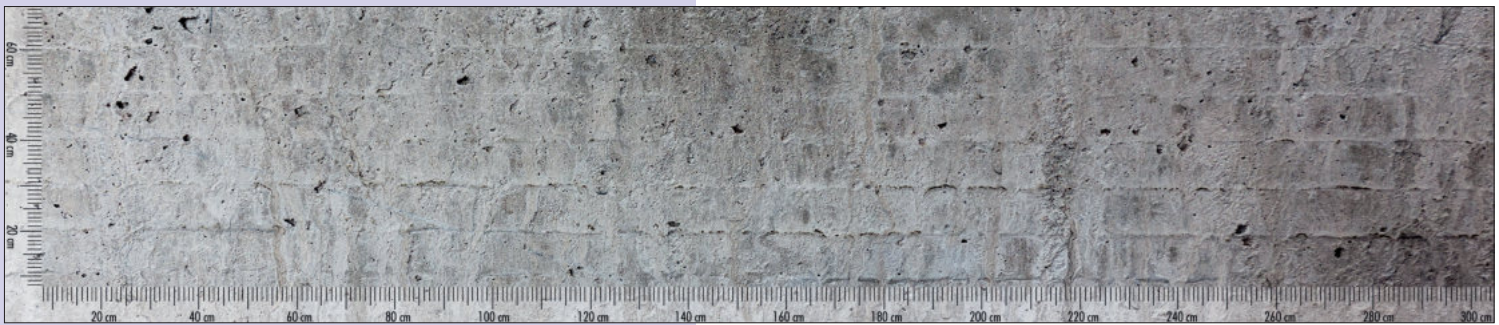


For formats outside of the width-to-height ratio of 1:4, cut-out consultation is required. The scale shown above is not printed on the niche rear wall.

PICi® 94

- Niche rear wall.
- aluminium composite or acrylic glass plate
 - UV pressure protection laminate
 - **H max. 700 mm**
 - **L max. 3050 mm**
 - **special sizes available on request**

8061190	aluminium, 3.5 mm, matt, price per m ²	535.29 €
8061191	aluminium, 3.5 mm, glossy, price per m ²	535.29 €
8062190	aluminium, 16 mm, matt, price per m ²	852.94 €
8062191	aluminium, 16 mm, glossy, price per m ²	852.94 €
8063191	acrylic, 3.5 mm, glossy, price per m ²	907.56 €
8064191	acrylic, 16 mm, glossy, price per m ²	1109.24 €
Optional accessories		
8060007	magnetic film, for aluminium, price per m ²	312.61 €

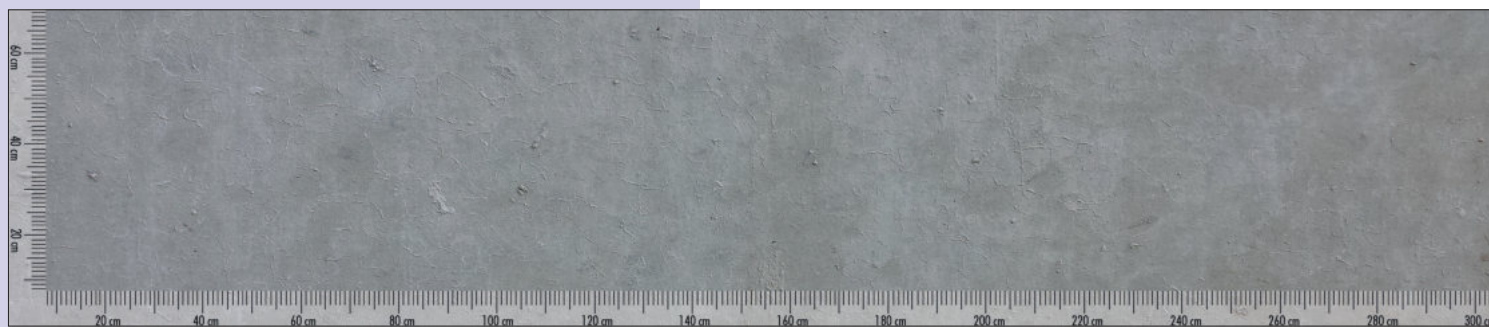


For formats outside of the width-to-height ratio of 1:4, cut-out consultation is required. The scale shown above is not printed on the niche rear wall.

PICi® 95

- Niche rear wall.
- aluminium composite or acrylic glass plate
 - UV pressure protection laminate
 - **H max. 700 mm**
 - **L max. 3050 mm**
 - **special sizes available on request**

8061192	aluminium, 3.5 mm, matt, price per m ²	535.29 €
8061193	aluminium, 3.5 mm, glossy, price per m ²	535.29 €
8062192	aluminium, 16 mm, matt, price per m ²	852.94 €
8062193	aluminium, 16 mm, glossy, price per m ²	852.94 €
8063193	acrylic, 3.5 mm, glossy, price per m ²	907.56 €
8064193	acrylic, 16 mm, glossy, price per m ²	1109.24 €
Optional accessories		
8060007	magnetic film, for aluminium, price per m ²	312.61 €

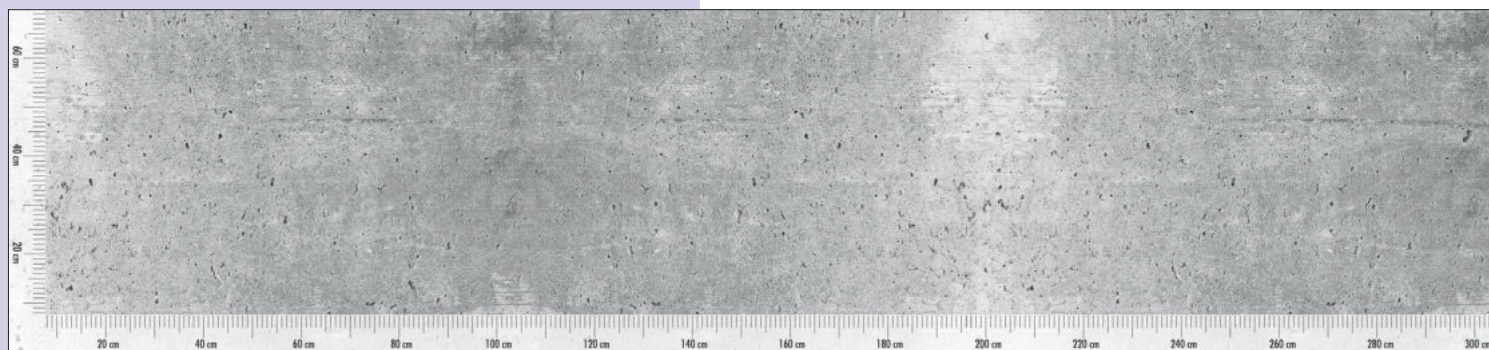


For formats outside of the width-to-height ratio of 1:4, cut-out consultation is required. The scale shown above is not printed on the niche rear wall.

PICi® 96

- Niche rear wall.
- aluminium composite or acrylic glass plate
 - UV pressure protection laminate
 - **H max. 700 mm**
 - **L max. 3050 mm**
 - **special sizes available on request**

8061194	aluminium, 3.5 mm, matt, price per m ²	535.29 €
8061195	aluminium, 3.5 mm, glossy, price per m ²	535.29 €
8062194	aluminium, 16 mm, matt, price per m ²	852.94 €
8062195	aluminium, 16 mm, glossy, price per m ²	852.94 €
8063195	acrylic, 3.5 mm, glossy, price per m ²	907.56 €
8064195	acrylic, 16 mm, glossy, price per m ²	1109.24 €
Optional accessories		
8060007	magnetic film, for aluminium, price per m ²	312.61 €

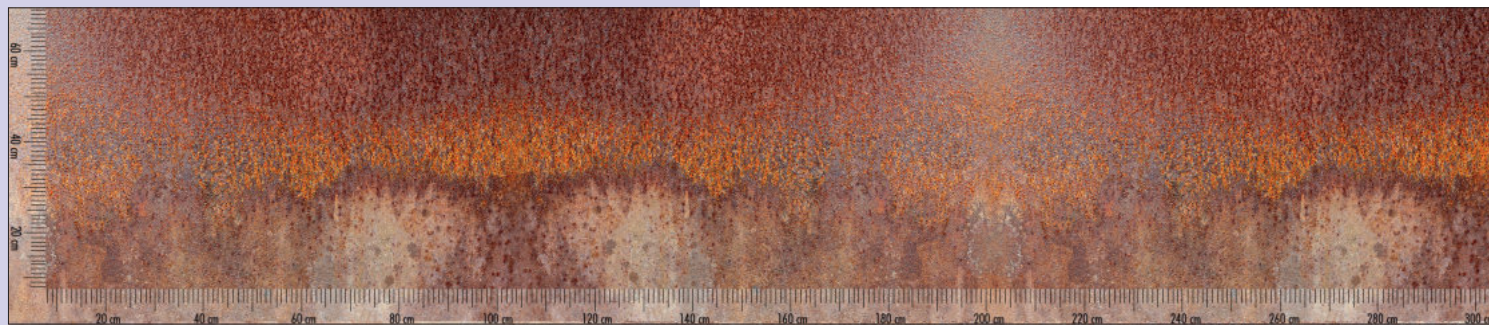


For formats outside of the width-to-height ratio of 1:4, cut-out consultation is required. The scale shown above is not printed on the niche rear wall.

PICi® 112

- Niche rear wall.
- aluminium composite or acrylic glass plate
 - UV pressure protection laminate
 - **H max. 700 mm**
 - **L max. 3050 mm**
 - **special sizes available on request**

8061224	aluminium, 3.5 mm, matt, price per m ²	535.29 €
8061225	aluminium, 3.5 mm, glossy, price per m ²	535.29 €
8062224	aluminium, 16 mm, matt, price per m ²	852.94 €
8062225	aluminium, 16 mm, glossy, price per m ²	852.94 €
8063225	acrylic, 3.5 mm, glossy, price per m ²	907.56 €
8064225	acrylic, 16 mm, glossy, price per m ²	1109.24 €
Optional accessories		
8060007	magnetic film, for aluminium, price per m ²	312.61 €



For formats outside of the width-to-height ratio of 1:4, cut-out consultation is required. The scale shown above is not printed on the niche rear wall.

PICi® 111

Niche rear wall.

- aluminium composite or acrylic glass plate
- UV pressure protection laminate
- **H max. 700 mm**
- **L max. 3050 mm**
- **special sizes available on request**

8061222	aluminium, 3.5 mm, matt, price per m ²	535.29 €
8061223	aluminium, 3.5 mm, glossy, price per m ²	535.29 €
8062222	aluminium, 16 mm, matt, price per m ²	852.94 €
8062223	aluminium, 16 mm, glossy, price per m ²	852.94 €
8063223	acrylic, 3.5 mm, glossy, price per m ²	907.56 €
8064223	acrylic, 16 mm, glossy, price per m ²	1109.24 €
Optional accessories		
8060007	magnetic film, for aluminium, price per m ²	312.61 €



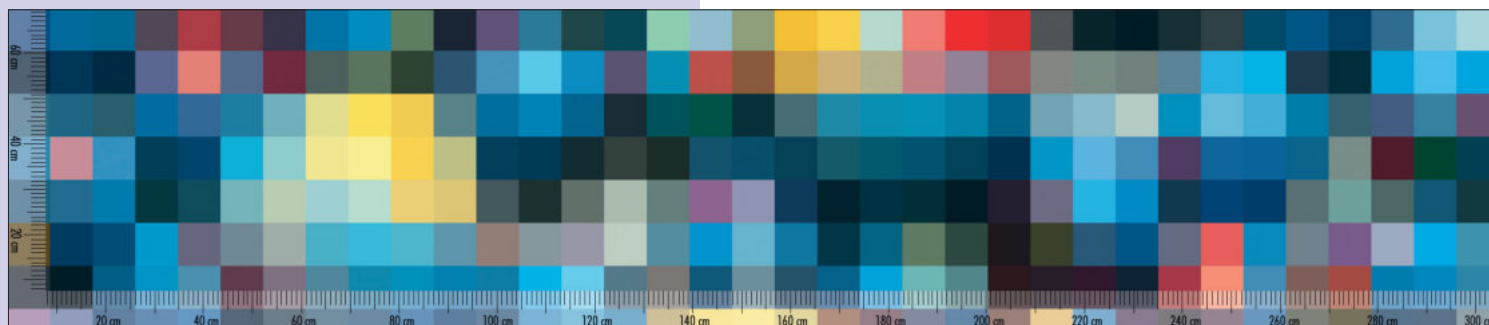
For formats outside of the width-to-height ratio of 1:4, cut-out consultation is required. The scale shown above is not printed on the niche rear wall.

PICi® 101

Niche rear wall.

- aluminium composite or acrylic glass plate
- UV pressure protection laminate
- **H max. 700 mm**
- **L max. 3050 mm**
- **special sizes available on request**

8061204	aluminium, 3.5 mm, matt, price per m ²	535.29 €
8061205	aluminium, 3.5 mm, glossy, price per m ²	535.29 €
8062204	aluminium, 16 mm, matt, price per m ²	852.94 €
8062205	aluminium, 16 mm, glossy, price per m ²	852.94 €
8063205	acrylic, 3.5 mm, glossy, price per m ²	907.56 €
8064205	acrylic, 16 mm, glossy, price per m ²	1109.24 €
Optional accessories		
8060007	magnetic film, for aluminium, price per m ²	312.61 €



For formats outside of the width-to-height ratio of 1:4, cut-out consultation is required. The scale shown above is not printed on the niche rear wall.

PiCi® 29

Niche rear wall.

- aluminium composite or acrylic glass plate
- UV pressure protection laminate
- H max. 700 mm
- L max. 3050 mm
- special sizes available on request

8061057	aluminium, 3.5 mm, matt, price per m ²	535.29 €
8061058	aluminium, 3.5 mm, glossy, price per m ²	535.29 €
8062057	aluminium, 16 mm, matt, price per m ²	852.94 €
8062058	aluminium, 16 mm, glossy, price per m ²	852.94 €
<hr/>		
8063058	acrylic, 3.5 mm, glossy, price per m ²	907.56 €
8064058	acrylic, 16 mm, glossy, price per m ²	1109.24 €
<hr/>		
Optional accessories		
8060007	magnetic film, for aluminium, price per m ²	312.61 €



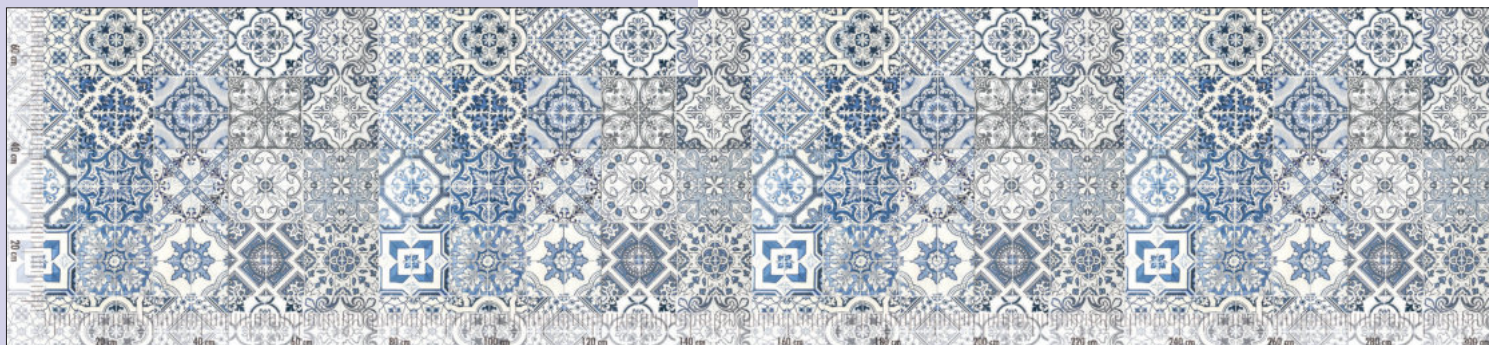
For formats outside of the width-to-height ratio of 1:4, cut-out consultation is required. The scale shown above is not printed on the niche rear wall.

PiCi® 129

Niche rear wall.

- aluminium composite or acrylic glass plate
- UV pressure protection laminate
- H max. 700 mm
- L max. 3050 mm
- special sizes available on request

8061243	aluminium, 3.5 mm, matt, price per m ²	535.29 €
8061244	aluminium, 3.5 mm, glossy, price per m ²	535.29 €
8062243	aluminium, 16 mm, matt, price per m ²	852.94 €
8062244	aluminium, 16 mm, glossy, price per m ²	852.94 €
<hr/>		
8063243	acrylic, 3.5 mm, glossy, price per m ²	907.56 €
8064243	acrylic, 16 mm, glossy, price per m ²	1109.24 €
<hr/>		
Optional accessories		
8060007	magnetic film, for aluminium, price per m ²	312.61 €



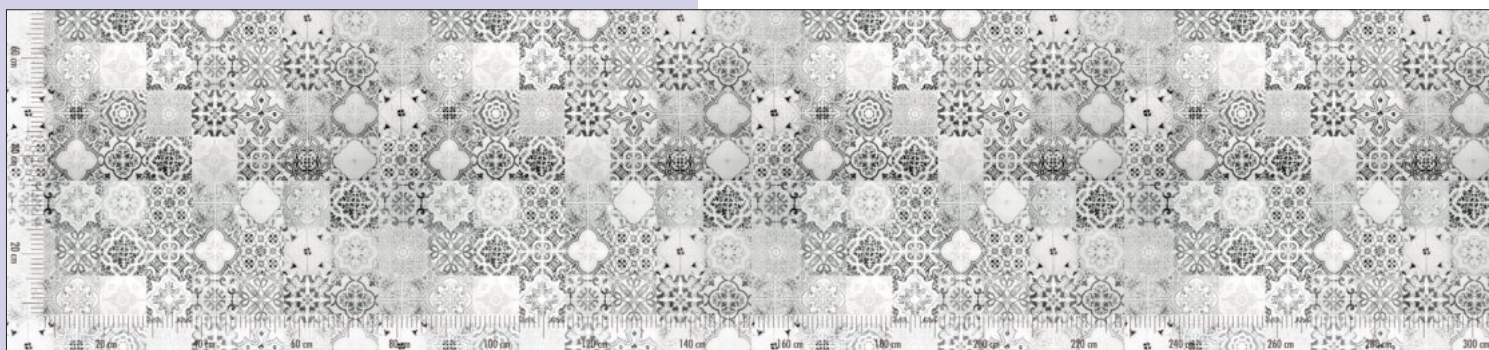
For formats outside of the width-to-height ratio of 1:4, cut-out consultation is required. The scale shown above is not printed on the niche rear wall.

PICi® 130

Niche rear wall.

- aluminium composite or acrylic glass plate
- UV pressure protection laminate
- **H max. 700 mm**
- **L max. 3050 mm**
- **special sizes available on request**

8061261	aluminium, 3.5 mm, matt, price per m ²	535.29 €
8061262	aluminium, 3.5 mm, glossy, price per m ²	535.29 €
8062261	aluminium, 16 mm, matt, price per m ²	852.94 €
8062262	aluminium, 16 mm, glossy, price per m ²	852.94 €
8063261	acrylic, 3.5 mm, glossy, price per m ²	907.56 €
8064261	acrylic, 16 mm, glossy, price per m ²	1109.24 €
Optional accessories		
8060007	magnetic film, for aluminium, price per m ²	312.61 €



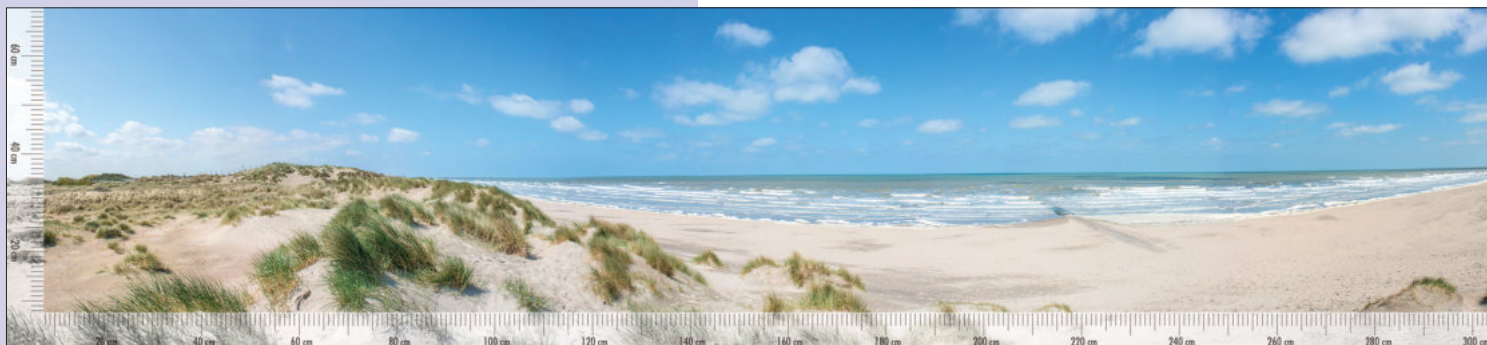
For formats outside of the width-to-height ratio of 1:4, cut-out consultation is required. The scale shown above is not printed on the niche rear wall.

PICi® 131

Niche rear wall.

- aluminium composite or acrylic glass plate
- UV pressure protection laminate
- **H max. 700 mm**
- **L max. 3050 mm**
- **special sizes available on request**

8061263	aluminium, 3.5 mm, matt, price per m ²	535.29 €
8061264	aluminium, 3.5 mm, glossy, price per m ²	535.29 €
8062263	aluminium, 16 mm, matt, price per m ²	852.94 €
8062264	aluminium, 16 mm, glossy, price per m ²	852.94 €
8063263	acrylic, 3.5 mm, glossy, price per m ²	907.56 €
8064263	acrylic, 16 mm, glossy, price per m ²	1109.24 €
Optional accessories		
8060007	magnetic film, for aluminium, price per m ²	312.61 €



For formats outside of the width-to-height ratio of 1:4, cut-out consultation is required. The scale shown above is not printed on the niche rear wall.

PICi® 117

Niche rear wall.

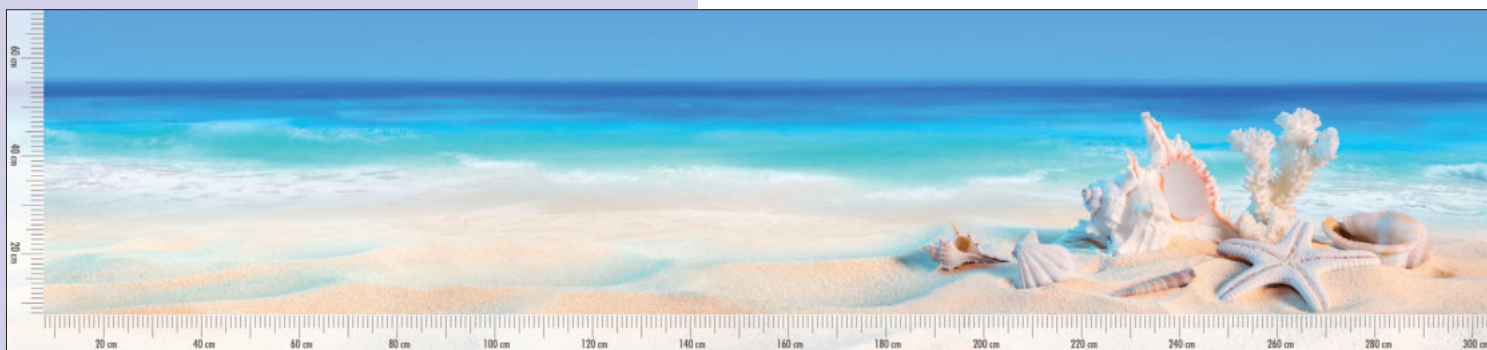
- aluminium composite or acrylic glass plate
- UV pressure protection laminate
- **H max. 700 mm**
- **L max. 3050 mm**
- **special sizes available on request**

8061249	aluminium, 3.5 mm, matt, price per m ²	535.29 €
8061250	aluminium, 3.5 mm, glossy, price per m ²	535.29 €
8062249	aluminium, 16 mm, matt, price per m ²	852.94 €
8062250	aluminium, 16 mm, glossy, price per m ²	852.94 €

8063249	acrylic, 3.5 mm, glossy, price per m ²	907.56 €
8064249	acrylic, 16 mm, glossy, price per m ²	1109.24 €

Optional accessories

8060007	magnetic film, for aluminium, price per m ²	312.61 €
----------------	--	-----------------



For formats outside of the width-to-height ratio of 1:4, cut-out consultation is required. The scale shown above is not printed on the niche rear wall.

PICi® 118

Niche rear wall.

- aluminium composite or acrylic glass plate
- UV pressure protection laminate
- **H max. 700 mm**
- **L max. 3050 mm**
- **special sizes available on request**

8061251	aluminium, 3.5 mm, matt, price per m ²	535.29 €
8061252	aluminium, 3.5 mm, glossy, price per m ²	535.29 €
8062251	aluminium, 16 mm, matt, price per m ²	852.94 €
8062252	aluminium, 16 mm, glossy, price per m ²	852.94 €

8063251	acrylic, 3.5 mm, glossy, price per m ²	907.56 €
8064251	acrylic, 16 mm, glossy, price per m ²	1109.24 €

Optional accessories

8060007	magnetic film, for aluminium, price per m ²	312.61 €
----------------	--	-----------------



Note:

Individual designs can be freely selected, combined and positioned. Many other individual designs can be found in one of the many Internet media libraries such as Fotolia. The scale shown above is not printed on the niche rear wall.

For this motif, a layout flat rate has to be charged for changes.

For more information, see page 580–582/24 EN.

PICi® 121

Niche rear wall.

- aluminium composite or acrylic glass plate
- UV pressure protection laminate
- H max. 700 mm
- L max. 3050 mm
- special sizes available on request

8061236	aluminium, 3.5 mm, matt, price per m ²	535.29 €
8061237	aluminium, 3.5 mm, glossy, price per m ²	535.29 €
8062236	aluminium, 16 mm, matt, price per m ²	852.94 €
8062237	aluminium, 16 mm, glossy, price per m ²	852.94 €

8063236	acrylic, 3.5 mm, glossy, price per m ²	907.56 €
8064236	acrylic, 16 mm, glossy, price per m ²	1109.24 €

Optional accessories

8060007	magnetic film, for aluminium, price per m ²	312.61 €
----------------	--	-----------------



Note:

Individual designs can be freely selected, combined and positioned. Many other individual designs can be found in one of the many Internet media libraries such as Fotolia. The scale shown above is not printed on the niche rear wall.

For this motif, a layout flat rate has to be charged for changes.

For more information, see page 580–582/24 EN.

PICi® 122

Niche rear wall.

- aluminium composite or acrylic glass plate
- UV pressure protection laminate
- H max. 700 mm
- L max. 3050 mm
- special sizes available on request

8061234	aluminium, 3.5 mm, matt, price per m ²	535.29 €
8061235	aluminium, 3.5 mm, glossy, price per m ²	535.29 €
8062234	aluminium, 16 mm, matt, price per m ²	852.94 €
8062235	aluminium, 16 mm, glossy, price per m ²	852.94 €

8063234	acrylic, 3.5 mm, glossy, price per m ²	907.56 €
8064234	acrylic, 16 mm, glossy, price per m ²	1109.24 €

Optional accessories

8060007	magnetic film, for aluminium, price per m ²	312.61 €
----------------	--	-----------------



For formats outside of the width-to-height ratio of 1:4, cut-out consultation is required. The scale shown above is not printed on the niche rear wall.

PICi® 123

Niche rear wall.

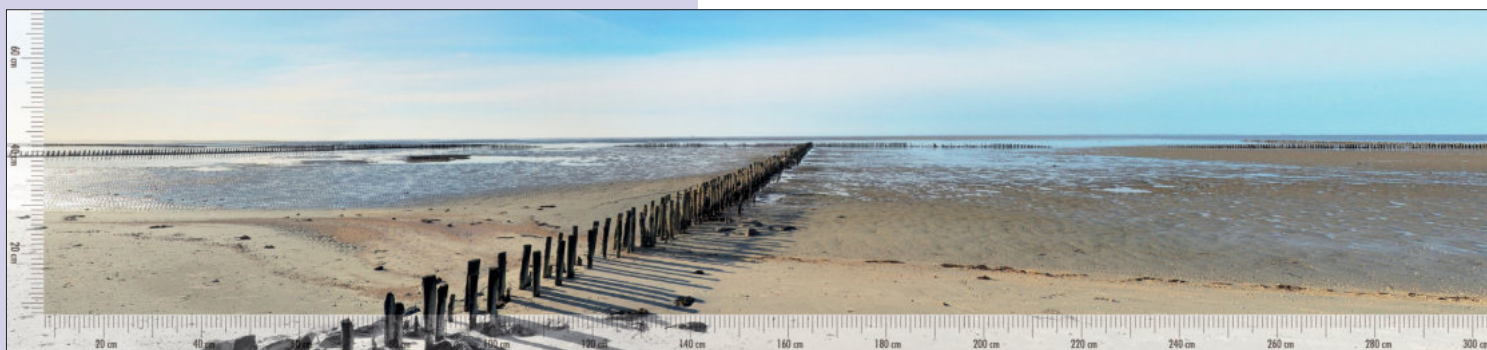
- aluminium composite or acrylic glass plate
- UV pressure protection laminate
- H max. 700 mm
- L max. 3050 mm
- special sizes available on request

8061265	aluminium, 3.5 mm, matt, price per m ²	535.29 €
8061266	aluminium, 3.5 mm, glossy, price per m ²	535.29 €
8062265	aluminium, 16 mm, matt, price per m ²	852.94 €
8062266	aluminium, 16 mm, glossy, price per m ²	852.94 €

8063265	acrylic, 3.5 mm, glossy, price per m ²	907.56 €
8064265	acrylic, 16 mm, glossy, price per m ²	1109.24 €

Optional accessories

8060007	magnetic film, for aluminium, price per m ²	312.61 €
---------	--	----------



For formats outside of the width-to-height ratio of 1:4, cut-out consultation is required. The scale shown above is not printed on the niche rear wall.

PICi® 119

Niche rear wall.

- aluminium composite or acrylic glass plate
- UV pressure protection laminate
- H max. 700 mm
- L max. 3050 mm
- special sizes available on request

8061239	aluminium, 3.5 mm, matt, price per m ²	535.29 €
8061240	aluminium, 3.5 mm, glossy, price per m ²	535.29 €
8062239	aluminium, 16 mm, matt, price per m ²	852.94 €
8062240	aluminium, 16 mm, glossy, price per m ²	852.94 €

8063239	acrylic, 3.5 mm, glossy, price per m ²	907.56 €
8064239	acrylic, 16 mm, glossy, price per m ²	1109.24 €

Optional accessories

8060007	magnetic film, for aluminium, price per m ²	312.61 €
---------	--	----------



For formats outside of the width-to-height ratio of 1:4, cut-out consultation is required. The scale shown above is not printed on the niche rear wall.

PICi® 116

Niche rear wall.

- aluminium composite or acrylic glass plate
- UV pressure protection laminate
- H max. 700 mm
- L max. 3050 mm
- special sizes available on request

8061245	aluminium, 3.5 mm, matt, price per m ²	535.29 €
8061246	aluminium, 3.5 mm, glossy, price per m ²	535.29 €
8062245	aluminium, 16 mm, matt, price per m ²	852.94 €
8062246	aluminium, 16 mm, glossy, price per m ²	852.94 €

8063245	acrylic, 3.5 mm, glossy, price per m ²	907.56 €
8064245	acrylic, 16 mm, glossy, price per m ²	1109.24 €

Optional accessories

8060007	magnetic film, for aluminium, price per m ²	312.61 €
---------	--	----------



For formats outside of the width-to-height ratio of 1:4, cut-out consultation is required. The scale shown above is not printed on the niche rear wall.

PICi® 124

Niche rear wall.

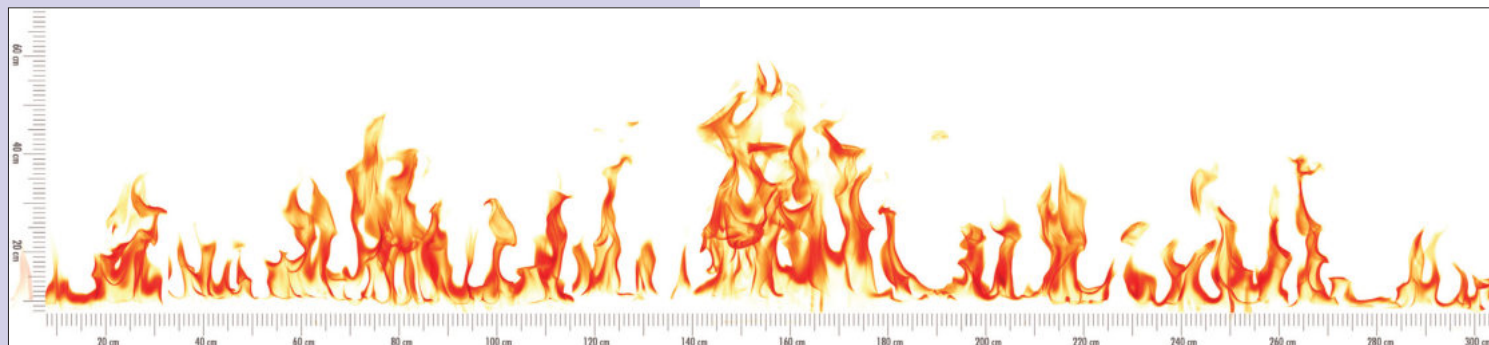
- aluminium composite or acrylic glass plate
- UV pressure protection laminate
- H max. 700 mm
- L max. 3050 mm
- special sizes available on request

8061247	aluminium, 3.5 mm, matt, price per m ²	535.29 €
8061248	aluminium, 3.5 mm, glossy, price per m ²	535.29 €
8062247	aluminium, 16 mm, matt, price per m ²	852.94 €
8062248	aluminium, 16 mm, glossy, price per m ²	852.94 €

8063247	acrylic, 3.5 mm, glossy, price per m ²	907.56 €
8064247	acrylic, 16 mm, glossy, price per m ²	1109.24 €

Optional accessories

8060007	magnetic film, for aluminium, price per m ²	312.61 €
---------	--	----------



For formats outside of the width-to-height ratio of 1:4, cut-out consultation is required. The scale shown above is not printed on the niche rear wall.

PICi® 125

Niche rear wall.

- aluminium composite or acrylic glass plate
- UV pressure protection laminate
- H max. 700 mm
- L max. 3050 mm
- special sizes available on request

8061241	aluminium, 3.5 mm, matt, price per m ²	535.29 €
8061242	aluminium, 3.5 mm, glossy, price per m ²	535.29 €
8062241	aluminium, 16 mm, matt, price per m ²	852.94 €
8062242	aluminium, 16 mm, glossy, price per m ²	852.94 €

8063241	acrylic, 3.5 mm, glossy, price per m ²	907.56 €
8064241	acrylic, 16 mm, glossy, price per m ²	1109.24 €

Optional accessories

8060007	magnetic film, for aluminium, price per m ²	312.61 €
---------	--	----------



For formats outside of the width-to-height ratio of 1:4, cut-out consultation is required. The scale shown above is not printed on the niche rear wall.

PICi® 127

Niche rear wall.

- aluminium composite or acrylic glass plate
- UV pressure protection laminate
- H max. 700 mm
- L max. 3050 mm
- special sizes available on request

8061253	aluminium, 3.5 mm, matt, price per m ²	535.29 €
8061254	aluminium, 3.5 mm, glossy, price per m ²	535.29 €
8062253	aluminium, 16 mm, matt, price per m ²	852.94 €
8062254	aluminium, 16 mm, glossy, price per m ²	852.94 €

8063253	acrylic, 3.5 mm, glossy, price per m ²	907.56 €
8064253	acrylic, 16 mm, glossy, price per m ²	1109.24 €

Optional accessories

8060007	magnetic film, for aluminium, price per m ²	312.61 €
---------	--	----------



For formats outside of the width-to-height ratio of 1:4, cut-out consultation is required. The scale shown above is not printed on the niche rear wall.

PICi® 120

Niche rear wall.

- aluminium composite or acrylic glass plate
- UV pressure protection laminate
- H max. 700 mm
- L max. 3050 mm
- special sizes available on request

8061255	aluminium, 3.5 mm, matt, price per m ²	535.29 €
8061256	aluminium, 3.5 mm, glossy, price per m ²	535.29 €
8062255	aluminium, 16 mm, matt, price per m ²	852.94 €
8062256	aluminium, 16 mm, glossy, price per m ²	852.94 €

8063255	acrylic, 3.5 mm, glossy, price per m ²	907.56 €
8064255	acrylic, 16 mm, glossy, price per m ²	1109.24 €

Optional accessories

8060007	magnetic film, for aluminium, price per m ²	312.61 €
---------	--	----------



Note:

Individual designs can be freely selected, combined and positioned. Many other individual designs can be found in one of the many Internet media libraries such as Fotolia. The scale shown above is not printed on the niche rear wall.

For this motif, a layout flat rate has to be charged for changes.

For more information, see page 580–582/24 EN.

PICi® 126

Niche rear wall.

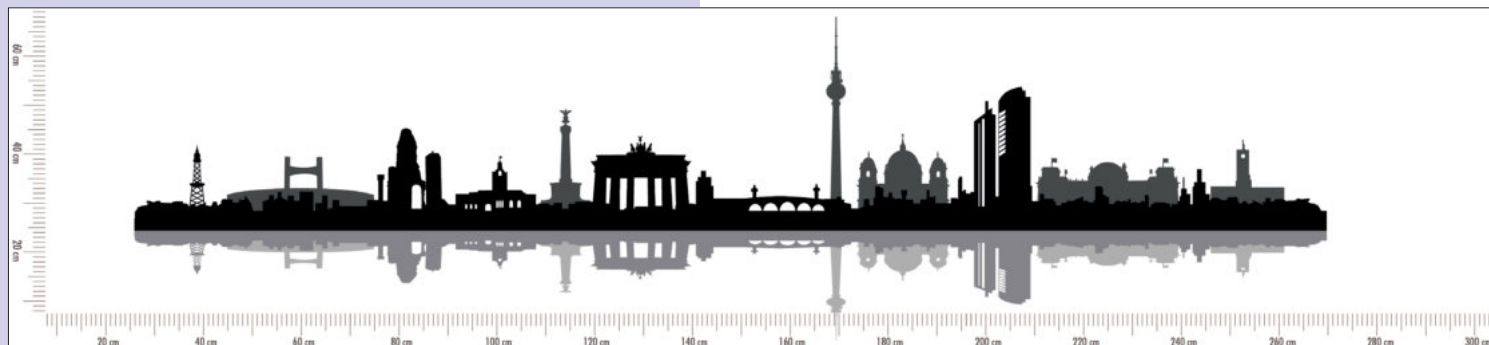
- aluminium composite or acrylic glass plate
- UV pressure protection laminate
- H max. 700 mm
- L max. 3050 mm
- special sizes available on request

8061257	aluminium, 3.5 mm, matt, price per m ²	535.29 €
8061258	aluminium, 3.5 mm, glossy, price per m ²	535.29 €
8062257	aluminium, 16 mm, matt, price per m ²	852.94 €
8062258	aluminium, 16 mm, glossy, price per m ²	852.94 €

8063257	acrylic, 3.5 mm, glossy, price per m ²	907.56 €
8064257	acrylic, 16 mm, glossy, price per m ²	1109.24 €

Optional accessories

8060007	magnetic film, for aluminium, price per m ²	312.61 €
---------	--	----------



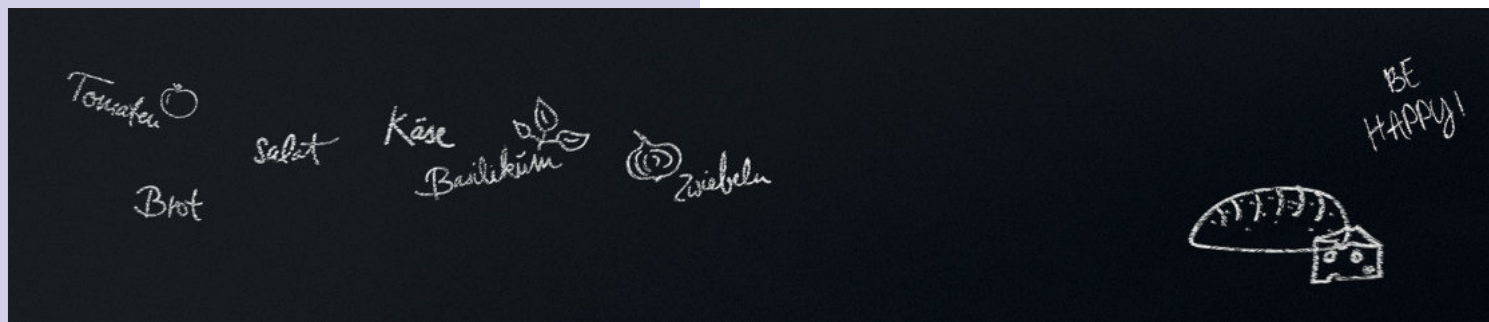
For formats outside of the width-to-height ratio of 1:4, cut-out consultation is required. The scale shown above is not printed on the niche rear wall.

PiCi® 128

Niche rear wall.

- aluminium composite or acrylic glass plate
- UV pressure protection laminate
- H max. 700 mm
- L max. 3050 mm
- special sizes available on request

8061259	aluminium, 3.5 mm, matt, price per m ²	535.29 €
8061260	aluminium, 3.5 mm, glossy, price per m ²	535.29 €
8062259	aluminium, 16 mm, matt, price per m ²	852.94 €
8062260	aluminium, 16 mm, glossy, price per m ²	852.94 €
8063259	acrylic, 3.5 mm, glossy, price per m ²	907.56 €
8064259	acrylic, 16 mm, glossy, price per m ²	1109.24 €
Optional accessories		
8060007	magnetic film, for aluminium, price per m ²	312.61 €



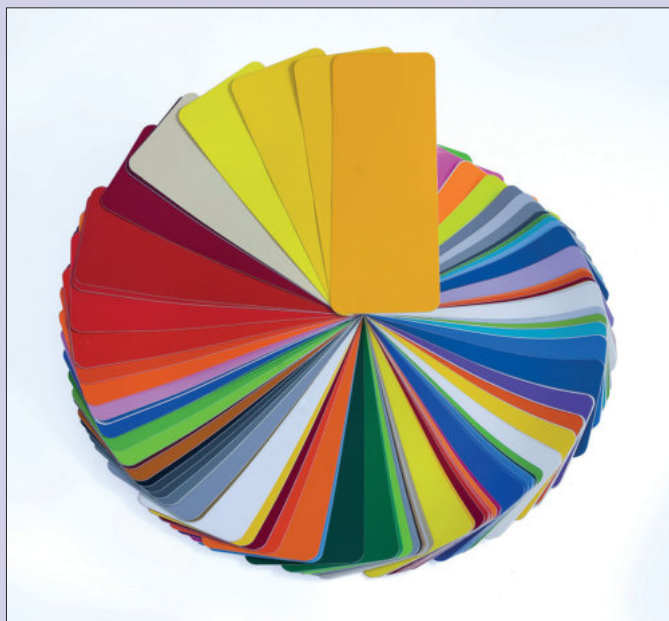
PiCi® Tafel

Niche rear wall. Can be written on in blackboard optics.

- aluminium composite plate
- UV pressure protection laminate
- H max. 700 mm
- L max. 3050 mm
- special sizes available on request

Behind the stove top, we also recommend a splash protection (see catalogue 1 page 618/24 EN).

8061267	aluminium, 3.5 mm, price per m ²	540.34 €
8062268	aluminium, 16 mm, price per m ²	844.54 €
Optional accessories		
8060007	magnetic film, for aluminium, price per m ²	312.61 €



BASICi®

Integrate your favourite colour in your kitchen. We deliver your BASICi® in all RAL-CLASSIC-colours.

Please quote the RAL-colour code when ordering!

BASICi®

- aluminium composite or acrylic glass plate
- H max. 700 mm
- L max. 3050 mm
- special sizes available on request

8067777	aluminium, 3.5 mm, matt, price per m ²	535.29 €
8068888	aluminium, 3.5 mm, glossy, price per m ²	535.29 €
8062777	aluminium, 16 mm, matt, price per m ²	852.94 €
8062888	aluminium, 16 mm, glossy, price per m ²	852.94 €
8063888	acrylic, 3.5 mm, glossy, price per m ²	907.56 €
8064888	acrylic, 16 mm, glossy, price per m ²	1109.24 €
Optional accessories		
8060007	magnetic film, for aluminium, price per m ²	312.61 €

Niche rear walls

PICit® and MySCENEit®

Information on design sections and bleeds

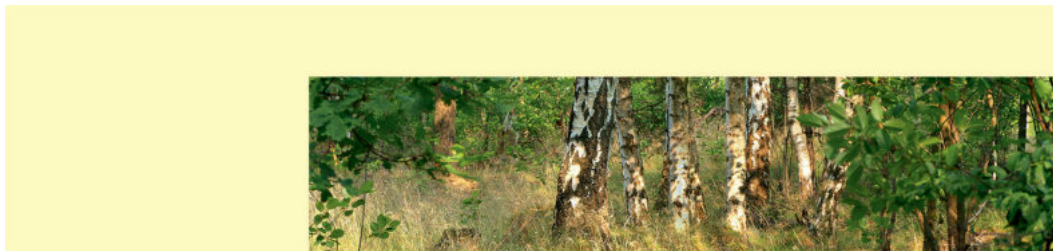
We demonstrate the differing representation of sections and bleeds on the basis of the motif PICit® 8 (birch forest). The sections shown here are for illustration purposes only and are merely layout examples.



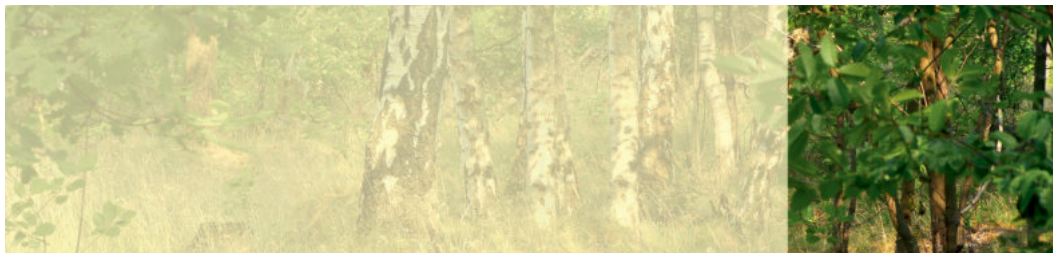
Original motif:

Dimensions
3050 x 700 mm

If you require a format that remains on a scale of 1:4 to the original, the design is proportionally a whole.



In all the other formats, parts of the design are trimmed.



Example:

narrow format



Example:

low format



Example:

exhaust hood area

In case of special formats, an agreement on the image section is always required.

Niche rear walls

TOPit



Spazzolato

The characteristic appearance of the TOPit Spazzolato surfaces is created by a special process in which a surface polish is rolled into the cover sheet and then finished with clear varnish. This surface in brushed aluminium look lends exclusivity and a highly personal expression, making every kitchen niche more attractive.

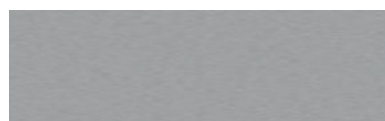
Five colours support the convincing integration into a wide range of styles of discerning living kitchens.



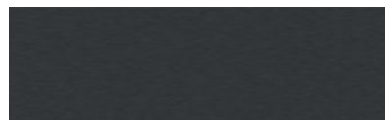
Spazzolato rosé



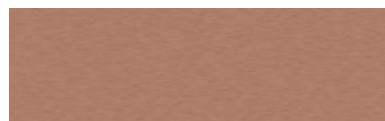
Spazzolato gold coloured



Spazzolato stainless steel coloured



Spazzolato anthracite



Spazzolato copper coloured

Strutturato

A special paint system gives the TOPit Strutturato niche rear walls a tangibly structured surface that is highly resistant to dirt and staining. And which – depending on the incidence of light – appears to radiate from within. This makes Strutturato superbly well-suited for a representative but at the same time reserved interior design.

Strutturato is available in three unobtrusive, aesthetically neutral colour schemes.



Strutturato silver coloured



Strutturato black



Strutturato white

TOPit features:

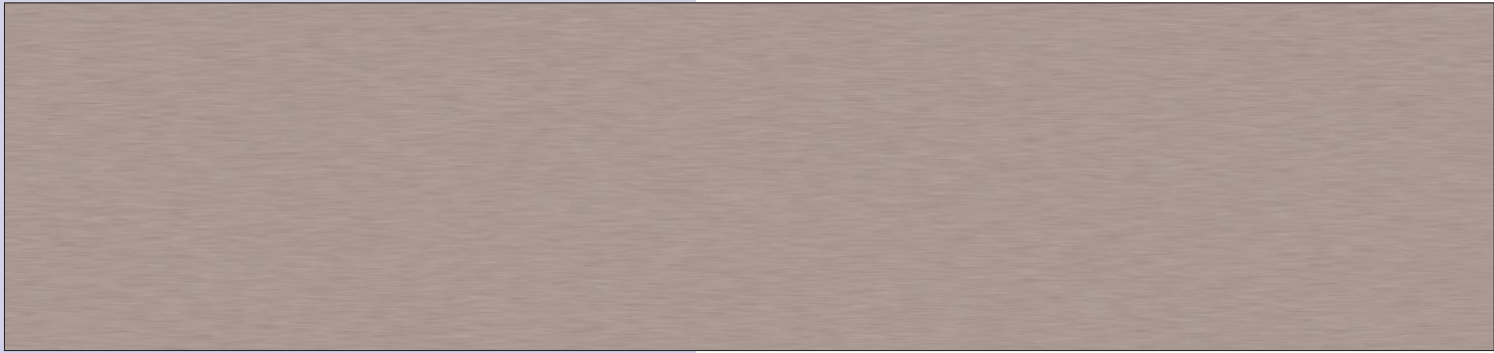
Aluminium composite plate with high-quality surfaces

Effortless processing as with the PICit rear walls

Hard-wearing, lastingly beautiful appearance

A high-quality combination of striking elegance and excellent functionality

Manufactured according to high quality standards, free of any hazardous materials



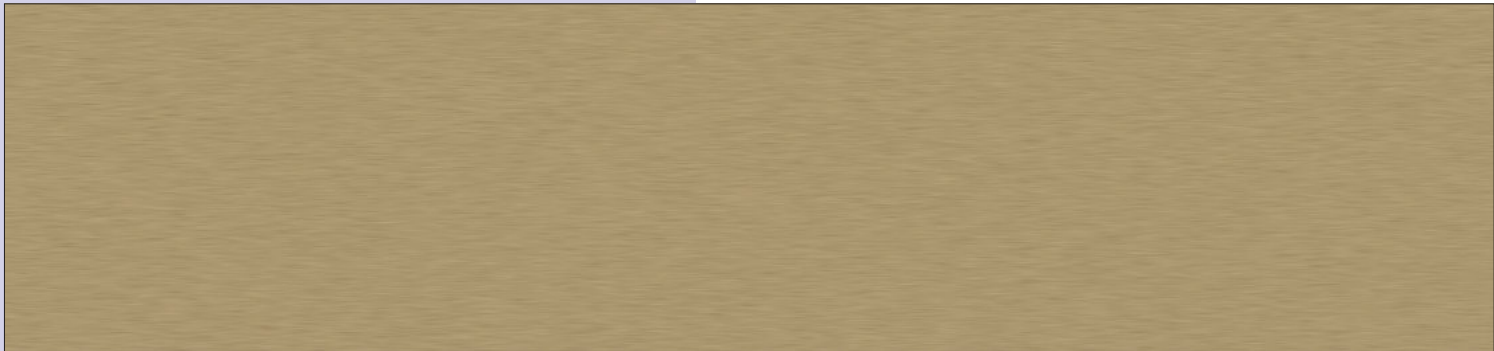
Due to the manufacturing process, deviations from the illustration shown are possible.

Spazzolato rose

Niche rear wall.

- aluminium composite plate
- brushed aluminium look rose
- rolled surface coated with clear varnish
- **H max. 700 mm**
- **L max. 3050 mm**

8066105 aluminium, 3.5 mm, glossy, price per m ²	535.29 €
8066205 aluminium, 16 mm, glossy, price per m ²	852.94 €



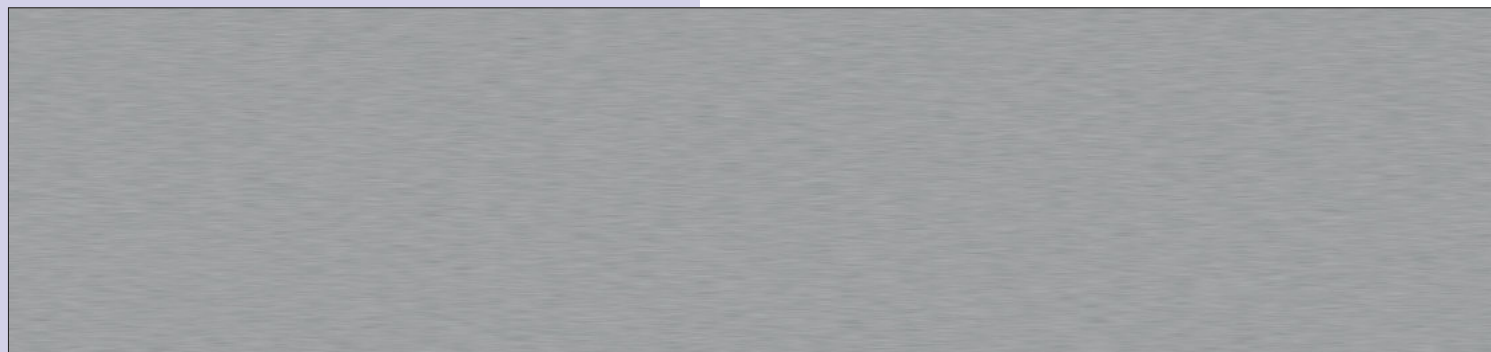
Due to the manufacturing process, deviations from the illustration shown are possible.

Spazzolato gold coloured

Niche rear wall.

- aluminium composite plate
- brushed aluminium look gold coloured
- rolled surface coated with clear varnish
- **H max. 700 mm**
- **L max. 3050 mm**

8066107 aluminium, 3.5 mm, glossy, price per m ²	535.29 €
8066207 aluminium, 16 mm, glossy, price per m ²	852.94 €

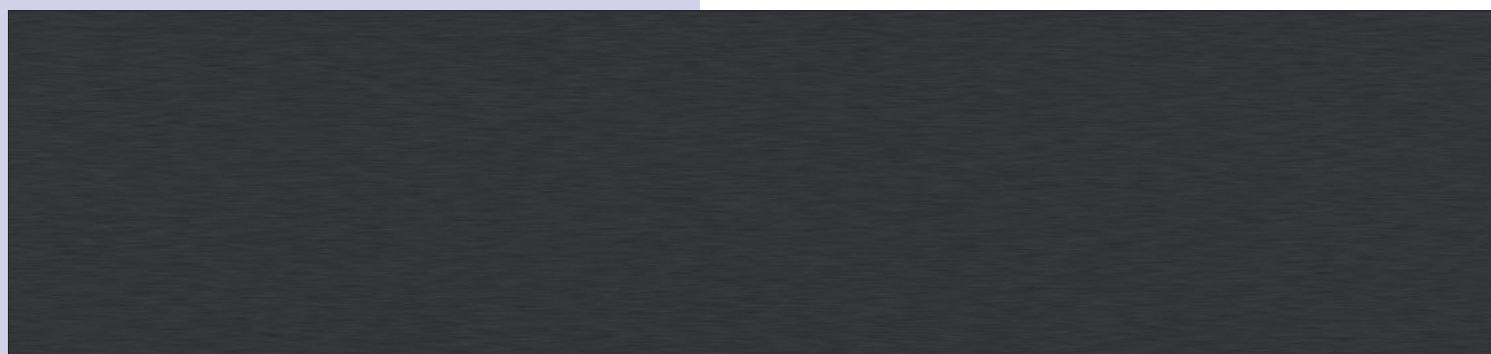


Due to the manufacturing process, deviations from the illustration shown are possible.

Spazzolato stainless steel coloured

- Niche rear wall.
- aluminium composite plate
 - brushed aluminium look stainless steel coloured
 - rolled surface coated with clear varnish
 - **H max. 700 mm**
 - **L max. 3050 mm**

8066108	aluminium, 3.5 mm, glossy, price per m ²	535.29 €
8066208	aluminium, 16 mm, glossy, price per m ²	852.94 €



Due to the manufacturing process, deviations from the illustration shown are possible.

Spazzolato anthracite

- Niche rear wall.
- aluminium composite plate
 - brushed aluminium look anthracite
 - rolled surface coated with clear varnish
 - **H max. 700 mm**
 - **L max. 3050 mm**

8066104	aluminium, 3.5 mm, glossy, price per m ²	535.29 €
8066204	aluminium, 16 mm, glossy, price per m ²	852.94 €

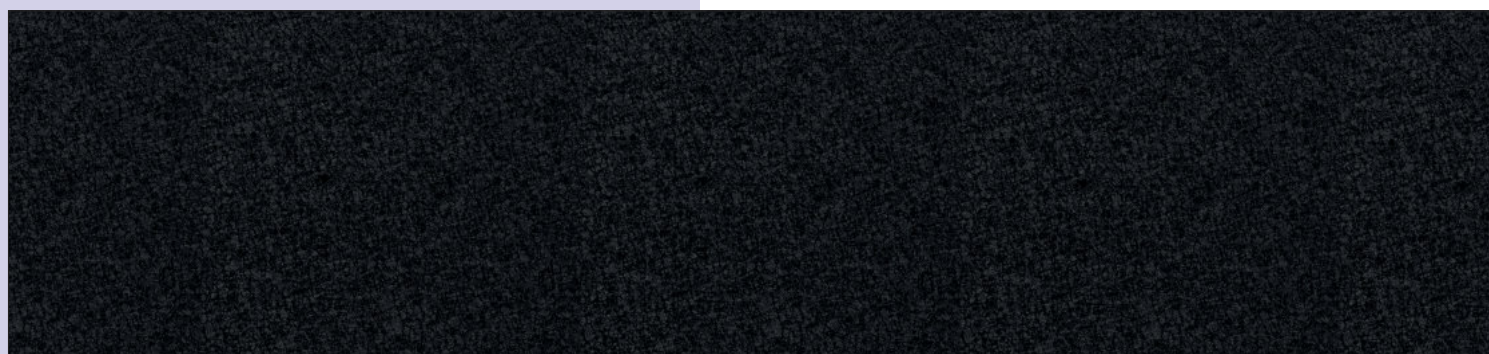


Due to the manufacturing process, deviations from the illustration shown are possible.

Spazzolato copper coloured

- Niche rear wall.
- aluminium composite plate
 - brushed aluminium look copper coloured
 - rolled surface coated with clear varnish
 - **H max. 700 mm**
 - **L max. 3050 mm**

8066106 aluminium, 3.5 mm, glossy, price per m ²	535.29 €
8066206 aluminium, 16 mm, glossy, price per m ²	852.94 €

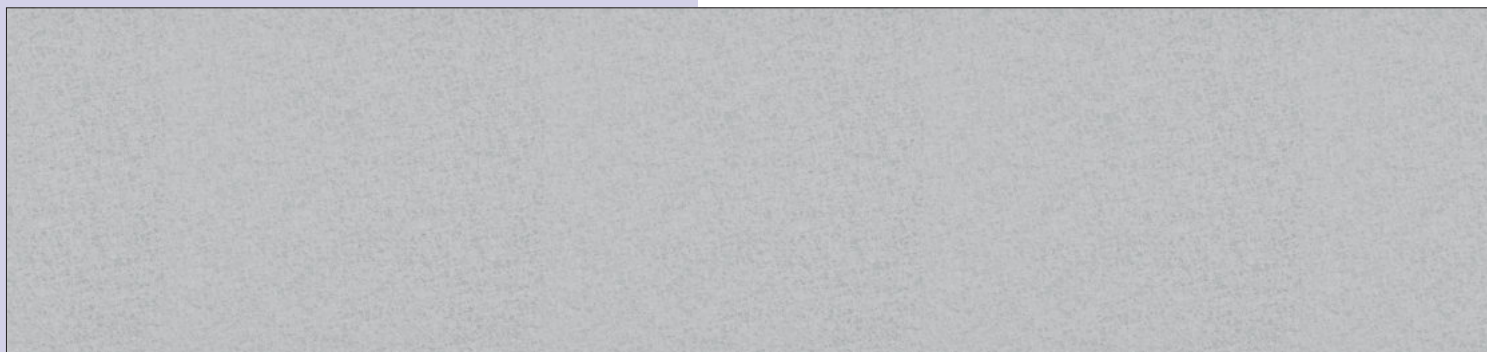


Due to the manufacturing process, deviations from the illustration shown are possible.

Strutturato black

- Niche rear wall.
- aluminium composite plate
 - black structured
 - characteristic structure due to special paint system
 - **H max. 700 mm**
 - **L max. 3050 mm**

8066102 aluminium, 3.5 mm, glossy, price per m ²	535.29 €
8066202 aluminium, 16 mm, glossy, price per m ²	852.94 €



Due to the manufacturing process, deviations from the illustration shown are possible.

Strutturato white

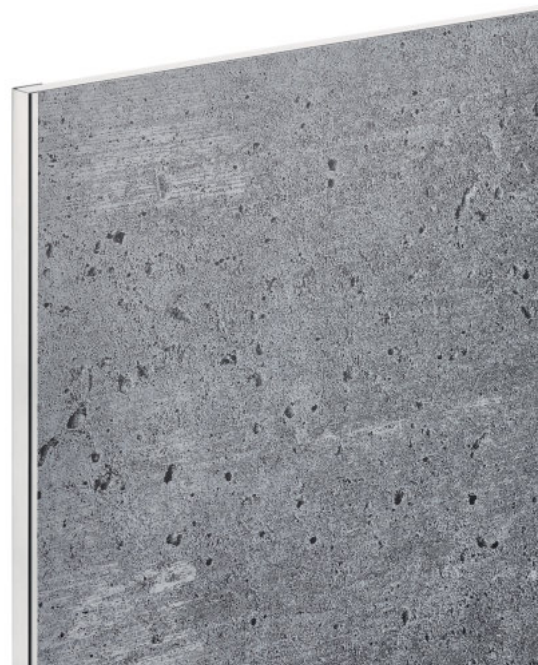
- Niche rear wall.
- aluminium composite plate
 - white structured
 - characteristic structure due to special paint system
 - **H max. 700 mm**
 - **L max. 3050 mm**

8066101	aluminium, 3.5 mm, glossy, price per m ²	535.29 €
8066201	aluminium, 16 mm, glossy, price per m ²	852.94 €

ACCOMODA®

Accessoires for niche rear walls

Well matched

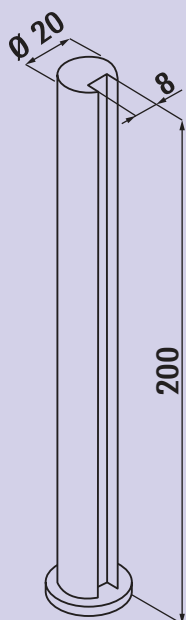


■ Spruzzo	Page 618
■ Glass shelf	Page 618
■ Prova colour change LED	Page 619–620
■ Stainless steel angle profile strips	Page 621



Spruzzo

Splash protection for fastening to the worktop. The bolted connection is fastened underneath the worktop. May be used for stove tops and sinks, also in gastronomy and shop construction. May also be used as a screen.



Spruzzo

Console. Splash protection. Suitable for 8 mm glass plate thickness.

- drill Ø 6 mm
- **glass shelves to be ordered separately**

3021132 stainless steel coloured, H 200 mm, Ø 20 mm, price per pair	75.21 €
3021134 black matt, H 200 mm, Ø 20 mm, price per pair	75.21 €

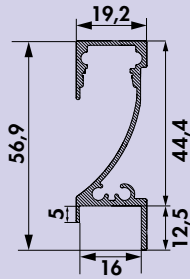
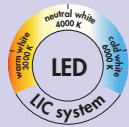


Glass shelf

Optional accessories for Spruzzo (3021132, 3021134), Kaiman (3021078, 3021092), Prior (3021032, 3021035), Akro (3021009) and Moon (3021090, 3021091).

- high-quality glass plates with polished edges
- thickness 8 mm
- depth 200 mm

3021014 clear glass, L 580 mm	45.71 €
3021026 clear glass, L 880 mm	67.14 €
3021124 clear glass, L 1140 mm	74.20 €
3021114 satinised glass, L 580 mm	69.83 €
3021126 satinised glass, L 880 mm	98.91 €
3021125 satinised glass, L 1140 mm	113.61 €



Prova colour change LED



Top-mounted lamp for rear walls. Aluminium LED profile, can be shortened every 25 mm, no visible LED points.

Individual lamp

- 31.2 watts, 12 V
- continuous control of the light colour from **2700 K** warm white to **6500 K** cold white
- max. 80 lumen/watt at **6500 K** cold white
- light length 2600 mm
- 2000 mm two-sided supply line
- LED strip 2600 mm, two-sided feed-in
- for 16 mm wall thickness
- LIC LED system compatible

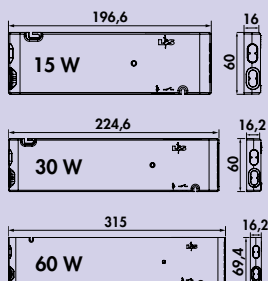
This product contains a light source of energy efficiency class G.

You'll find further colour change function converters and remote controls in catalogue 1 page 268–270/24 EN.

7061207	single lamp, L 2600 mm, stainless steel coloured	260.50 €
7061209	single lamp, L 2600 mm, black matt	265.04 €

Optional accessories

7061049	LED connection line, white, L 2000 mm	4.03 €
7061305	Prova colour change LED strip, L 2600 mm, 31.2 W/12 V	98.82 €



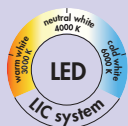
FW function converter



The FW function converter for colour change lighting systems.

- white
- 12 VDC
- max. 36 watt load per slot on the converter
- 2000 mm mains connection line
- **switchable by Bluetooth app (module 3) or by optionally available radio remote control**

7061286 module 2 (radio), 15 W, 4-way distributor	95.21 €
7061271 module 2 (radio), 30 W, 6-way distributor	121.26 €
7061273 module 2 (radio), 60 W, 6-way distributor	152.69 €
7061287 module 3 (Bluetooth + radio), 15 W, 4-way distributor	127.56 €
7061281 module 3 (Bluetooth + radio), 30 W, 6-way distributor	156.30 €
7061283 module 3 (Bluetooth + radio), 60 W, 6-way distributor	188.66 €



1-channel colour change remote control



- stepless control of the light colour
- dimming function
- auto memory: brightness and light temperature settings are saved
- one controller can be used for various colour change converters
- 8 x 90 x 50 mm (H x L x B)

7061285 white	53.61 €
----------------------	----------------



LED connection line



- secondary for LED
- with mini plug-in system

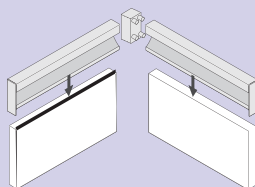
7061049 white, L 2000 mm	4.03 €
---------------------------------	---------------



Distributor 6-fold

- for 12 VDC
- with 200 mm of supply line

7061244 black	6.97 €
----------------------	---------------



Prova 90° connecting corner element

Corner element 90°.

- end cap right
- end cap left
- connection cable secondary for LED 1800 mm

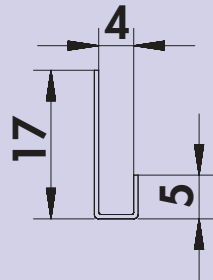
7061208 stainless steel coloured	11.60 €
7061220 black matt	11.60 €



Stainless steel angle profile strips

The stainless steel angle profiles ensure a decorative and clean finish to all Naber PICit® and TOPit niche rear wall panels.

Whether 4 mm or 16 mm plate thickness, the side cut edges can be attractively covered with the angled, brushed stainless steel profile. In this way, the edge of the rear wall becomes a high-quality design element.



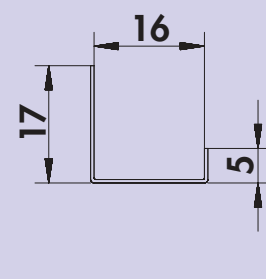
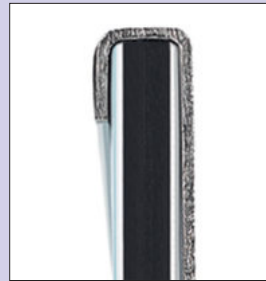
Stainless steel U-shaped angle profile 4 mm

High-quality stainless steel profile for side edges of niche rear walls. The U-shaped angled profile frames the niche rear wall and provides a clean and decorative finish to the cut edge.

— standard length per profile 990 m

8060010 stainless steel

27.73 €



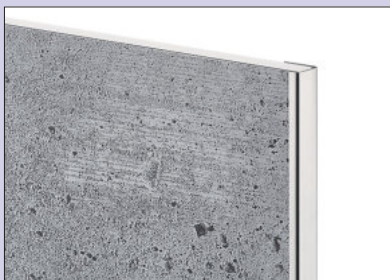
Stainless steel U-shaped angle profile 16 mm

High-quality stainless steel profile for side edges of niche rear walls. The U-shaped angled profile frames the niche rear wall and provides a clean and decorative finish to the cut edge.

— standard length per profile 990 mm

8060011 stainless steel

34.87 €



ACCOMODA®

Rail and shelf systems

Some solutions
are right at hand

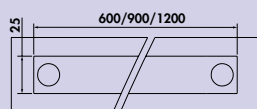


■ Cast	Page 624
Alto	Page 625–626
Linero MosaiQ	Page 627–631
Linero EasyLine	Page 632
Stainless steel rail	Page 633–635
Linero 2000	Page 636–639
Linero K 16	Page 640–642
transFORM	Page 643–654
YouK	Page 655–656
Cubo	Page 656–661



Cast

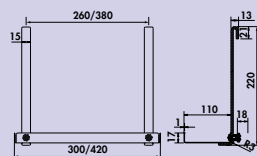
The rail system Cast is characterised by clear angular lines. The industrial look with its distinctive features gives the area between the countertop and the wall cupboard a corresponding charm.



Cast set

Rail system, incl. hooks.
– anthracite
– 25 x 24 mm (H x D)

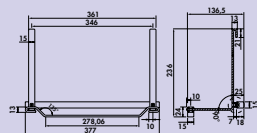
8042100 W 600 mm, incl. 4 hooks	80.67 €
8042101 W 900 mm, incl. 6 hooks	100.84 €
8042102 W 1200 mm, incl. 6 hooks	121.01 €



Cast tray

– anthracite
– 220 x 138 mm (H x D)

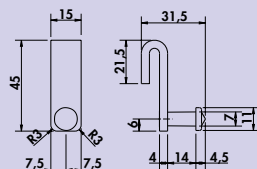
8042103 W 300 mm	95.80 €
8042104 W 420 mm	105.88 €



Cast paper roll holder

For household rolls.
– 220 x 377 x 138 mm (H x W x D)

8042105 anthracite	88.24 €
---------------------------	----------------



Cast hook

– 1 hooks, L 45 mm

8042106 anthracite	6.64 €
---------------------------	---------------



Alto

The design rail system Alto combines straight-line design in brushed stainless steel coloured aluminium with high functionality and elegance of accessories.



Alto set

Rail system. Rectangular, aluminium, surface stainless steel coloured brushed or black matt.
— 35 x 17 mm (H x D)

Set consisting of:

- 2 brackets
- 2 end caps
- 3 hooks

8044100 stainless steel coloured, L 600 mm	97.98 €
8044101 stainless steel coloured, L 900 mm	120.17 €
8044102 L 1200 mm, stainless steel coloured	138.66 €



8044170 black matt, L 600 mm	115.88 €
8044171 black matt, L 900 mm	133.61 €
8044172 black matt, L 1200 mm	154.62 €



Alto hook set

Set consisting of:

- 3 hooks
- L 30 mm

8044103 stainless steel coloured	24.37 €
8044173 black matt	28.49 €



Alto tray narrow

— 90 x 350 x 165 mm (H x W x D)

8044105 stainless steel coloured	149.58 €
8044175 black matt	167.23 €



Alto paper roll holder closed

For household rolls. 1-fold.
— 90 x 350 x 165 mm (H x W x D)

8044107 stainless steel coloured	189.50 €
8044177 black matt	221.76 €



Alto paper roll holder open

For household rolls. 1-fold.
— 90 x 300 x 125 mm (H x W x D)

8044109 stainless steel coloured	88.99 €
8044179 black matt	97.90 €



Alto towel holder 1

1-fold.
— 90 x 350 x 15 mm (H x W x D)

8044108 stainless steel coloured	88.99 €
8044178 black matt	97.90 €

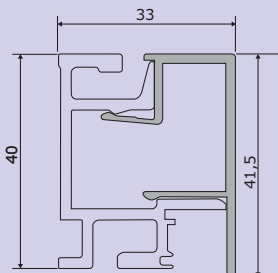
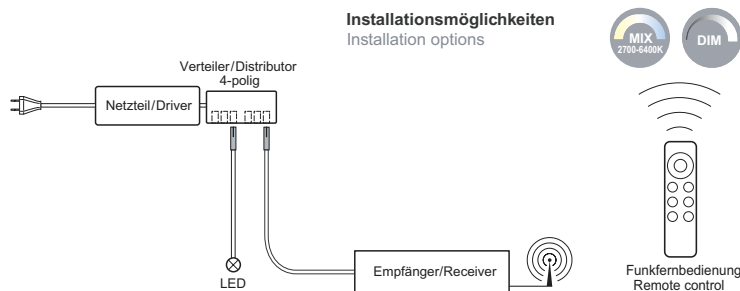


Linero MosaiQ

Countless possibilities for niches – Linero MosaiQ is just as versatile and flexible as its users.

By ordering the LED strips additionally, the multi-functional profile in anodised aluminium can also be used as a light strip. In this way, it emits warm-toned, indirect lighting onto its components.

The MosaiQ components are hooked in or attached. They are available in three heights and three widths, accented by horizontal decorative elements.



Linero MosaiQ profile strips set-1

Rail system. Aluminium.

Set consisting of:

- 1 aluminium profile strip (41.5 x 33 mm, H x D)
- 2 end pieces, 1 connector plus screws and dowels

8045001	L 600 mm, stainless steel coloured	80.76 €
8045002	L 900 mm, stainless steel coloured	110.67 €
8045003	L 1200 mm, stainless steel coloured	142.18 €
8045004	L 1500 mm, stainless steel coloured	173.70 €

8045201	L 600 mm, black matt	80.76 €
8045202	L 900 mm, black matt	110.67 €
8045203	L 1200 mm, black matt	142.18 €
8045204	L 1500 mm, black matt	173.70 €



Linero MosaiQ LED Stripe

Flex Stripes.

- 12 watts/meter, 12 V DC
- continuous control of the light colour from **2700 K** warm white to **6500 K** cold white
- dimmer function: infinitely variable brightness control
- max. 101 lumen/watt at **6500 K** cold white
- lengths suitable for the profile strips
- 12.5 x 10.25 mm (H x W)

This product contains a light source of energy efficiency class E.

8045051	L 600 mm	106.22 €
8045052	L 900 mm	137.73 €
8045053	L 1200 mm	183.61 €
8045054	L 1500 mm	222.27 €



Linero MosaiQ LED control set



Suitable for stepless control of the light colour and for dimming.

Set consisting of:

- 1 power supply unit
- 6-way distributor
- 1 receiver
- 1 function remote control
- max. 75 watts
- incl. 2900 mm mains cable

8045056 white

388.82 €



Linero MosaiQ LED extension cable

For Linero MosaiQ LED Stripe.

8045047 L 3000 mm

15.88 €



Linero MosaiQ eBoxx set socket application

With integrated double socket.

Set consisting of:

- 2 sockets with earthing contact
- 1 supply line 2000 m
- 139 x 165 x 92 mm (H x W x D)

8045007 graphite black

242.94 €



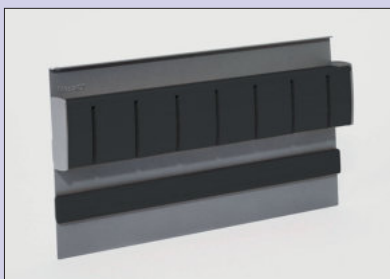
Linero MosaiQ Power Maxx

Adhesive. For installation of the profile strips on load-bearing, smooth and flat surfaces (tiles, glass, wood, laminate, metal and many plastics). 1 adhesive set is sufficient for a profile strip of 1500 mm.

- load bearing capacity ca. 9 kg on 600 mm

8045005 adhesive set

23.28 €



Linero MosaiQ magnetic knife holder 2

With oak block for 7 knives and safety panel for the knife blades. The knives can be inserted from the front and are held by internal magnets.

- 200 x 350 x 45 mm (H x W x D)

8045011 graphite black

210.59 €

8045211 black matt

216.05 €



Linero MosaiQ paper roll holder

For household rolls. 1-fold. Hooked in from below.
– 120 x 350 x 155 mm (H x W x D)

8045012	graphite black	58.99 €
8045212	black matt	60.25 €



Linero MosaiQ roll holder

2 levels. With tear-off attachment for aluminium foil and cling film. Suitable for foils up to a width of 325 mm.
– 300 x 350 x 110 mm (H x W x D)

8045013	graphite black	194.37 €
8045213	black matt	202.44 €



Linero MosaiQ tubular pot

With plastic insert. For storage of kitchen utensils or fresh herbs.

- ABS plastic
- dishwasher-proof
- food-safe
- UV-resistant
- 156 x 135 x 135 mm (H x W x D)

8045014	white, RAL 9003	29.41 €
---------	-----------------	---------



Linero MosaiQ bowl

Note holder or storage element for small bits and pieces

- ABS plastic
- dishwasher-proof
- food-safe
- UV-resistant
- 56 x 116 x 115 mm (H x W x D)

8045015	white, RAL 9003	20.59 €
---------	-----------------	---------



Linero MosaiQ universal shelf 1

Suitable for bowl.
– 140 x 350 x 110 mm (H x W x D)

8045016	graphite black	59.16 €
8045216	black matt	61.34 €



Linero MosaiQ universal shelf 2

Suitable for tubular and bowl.
– 200 x 350 x 110 mm (H x W x D)

8045017	graphite black	70.25 €
8045217	black matt	72.35 €



Liner MosaiQ universal shelf 3

Suitable for tubular and bowl.
— 300 x 350 x 110 mm (H x W x D)

8045018	graphite black	82.44 €
8045218	black matt	83.95 €



Liner MosaiQ universal shelf 4

With bracket. Suitable for bowl.
— 200 x 350 x 110 mm (H x W x D)

8045019	graphite black	80.92 €
8045219	black matt	83.45 €



Liner MosaiQ cloth strip 1

Can be hooked in from above.
— 10 x 350 x 77 mm (H x W x D)

8045022	graphite black	30.00 €
8045222	black matt	31.01 €



Liner MosaiQ cloth strip 2

Can be hooked in from above.
— 46 x 350 x 77 mm (H x W x D)

8045023	graphite black	37.73 €
8045223	black matt	38.49 €



Liner MosaiQ hook strip 1

2-fold.
— 38 x 85 x 44 mm (H x W x D)

8045024	graphite black	20.59 €
8045224	black matt	22.02 €



Liner MosaiQ hook strip 2

6-fold.
— 38 x 250 x 44 mm (H x W x D)

8045025	graphite black	27.73 €
8045225	black matt	28.40 €



Linero MosaiQ top shelf medium

To be hooked in from above. Suitable for tubular and bowl.
— 8 x 350 x 107 mm (H x W x D)

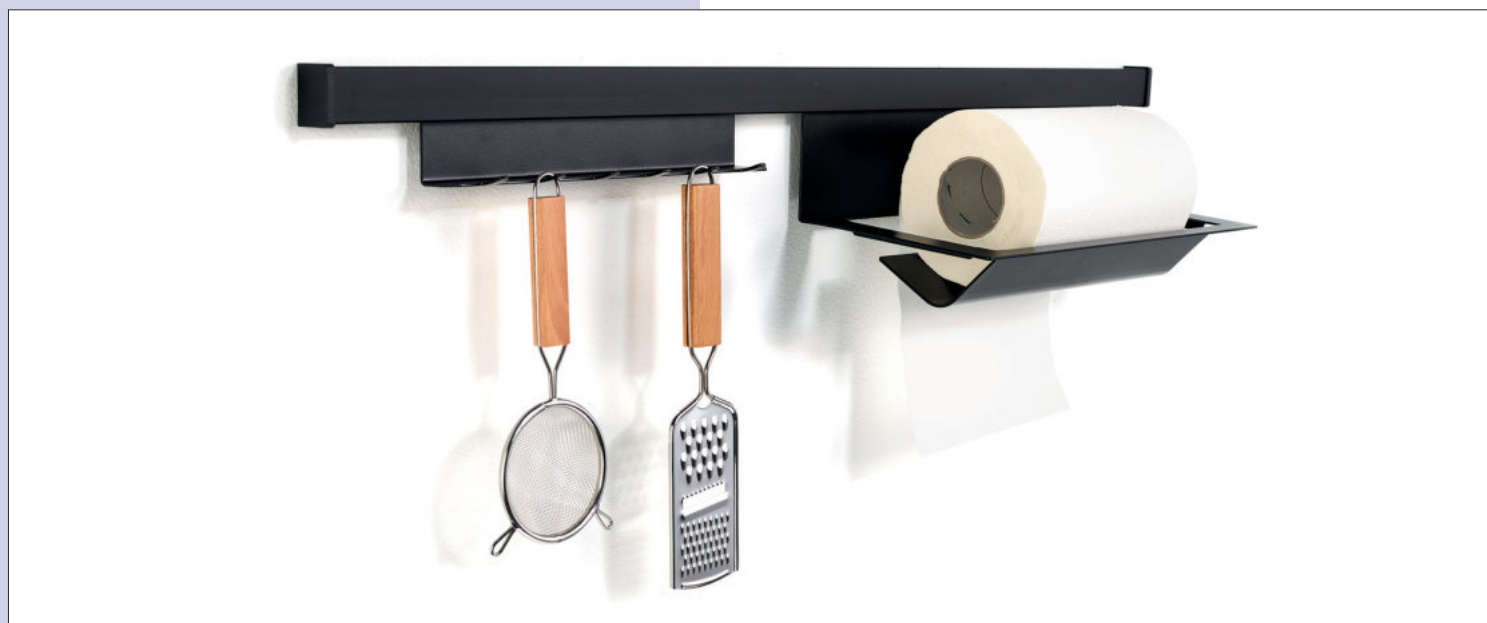
8045027 graphite black	36.55 €
8045227 black matt	37.23 €



Linero MosaiQ top shelf long

To be hooked in from above. Suitable for tubular and bowl.
— 8 x 585 x 107 mm (H x W x D)

8045028 graphite black	44.71 €
8045228 black matt	46.55 €



Linero EasyLine set-1

Rail system. Aluminium. Without LED lighting.

Set consisting of:

- 1 profile strip set (1 strip L 800 mm, 2 end pieces)
- 1 hook strip
- 1 universal shelf, W 350 mm

8045048 black matt

184.03 €



Linero EasyLine set-2

Rail system. Aluminium. Without LED lighting.

Set consisting of:

- 1 profile strip set (1 strip L 800 mm, 2 end pieces)
- 1 paper roll holder
- 1 universal shelf, W 350 mm

8045049 black matt

201.68 €



Linero EasyLine set-3

Rail system. Aluminium. Without LED lighting.

Set consisting of:

- 1 profile strip set (1 strip L 800 mm, 2 end pieces)
- 1 hook strip
- 1 paper roll holder

8045050 black matt

178.99 €



Stainless steel rail set-1



Rail system. Tube Ø 16 mm.
Set consisting of:
– 1 tube, L 600 mm (8048008)
– 2 brackets (8048002)
– 2 end caps (8048015)
– 5 S-hooks (8048014)

8048001 stainless steel

102.52 €



Stainless steel rail set-2



Rail system. Tube Ø 16 mm.
Set consisting of:
– 1 tube, L 1200 mm (8048010)
– 2 brackets (8048002)
– 2 end caps (8048015)
– 5 S-hooks (8048014)

8048002 stainless steel

136.13 €



Stainless steel rail tube



Tube Ø 16 mm.

8048008 stainless steel, L 600 mm

29.50 €

8048009 stainless steel, L 1000 mm

46.72 €

8048010 stainless steel, L 1200 mm

59.66 €



Stainless steel rail plastic sleeve



For tube connection.

8041033 white, plastic

2.44 €



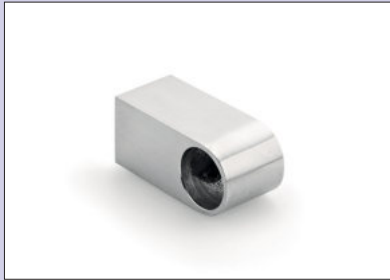
Stainless steel rail end cap



With set screw and plastic sleeve.

8048015 stainless steel

10.50 €



Stainless steel rail tube holder, angular



With screw-on sleeve, drywall screw, 2 hexagon socket screws and hexagon spanner.

— length of the bracket 45 mm

8048022 stainless steel

23.03 €



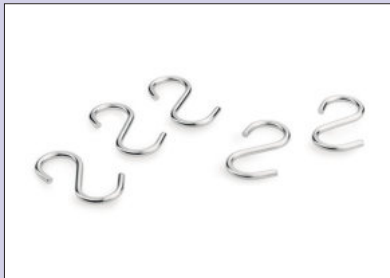
Stainless steel rail bend 90°



Tube Ø 16 mm.

8048012 stainless steel

30.84 €



Stainless steel rail S hooks



1 PU = 5 pieces

8048014 stainless steel, price per PU

13.70 €



Stainless steel rail filter paper holder



— 150 x 160 x 93 mm (H x W x D)

8048016 stainless steel

63.03 €



Stainless steel rail paper roll holder 1



1-fold.

— 100 x 300 x 130 mm (H x W x D)

8048019 stainless steel

66.97 €



Stainless steel rail paper towel holder 3



3-fold.
— 340 x 335 x 130 mm (H x W x D)

8048020 stainless steel

110.92 €



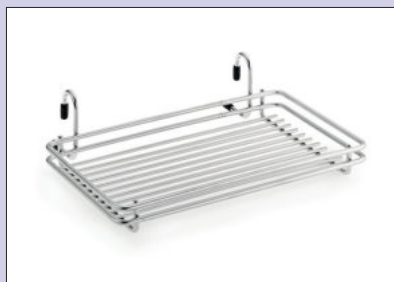
Stainless steel rail spice rack



For 2 x 6 spice pots.
— 270 x 360 x 78 mm (H x W x D)

8048023 stainless steel

115.13 €



Stainless steel hanging basket



Flat.
— 70 x 260 x 150 mm (H x W x D)

8048017 stainless steel

73.61 €



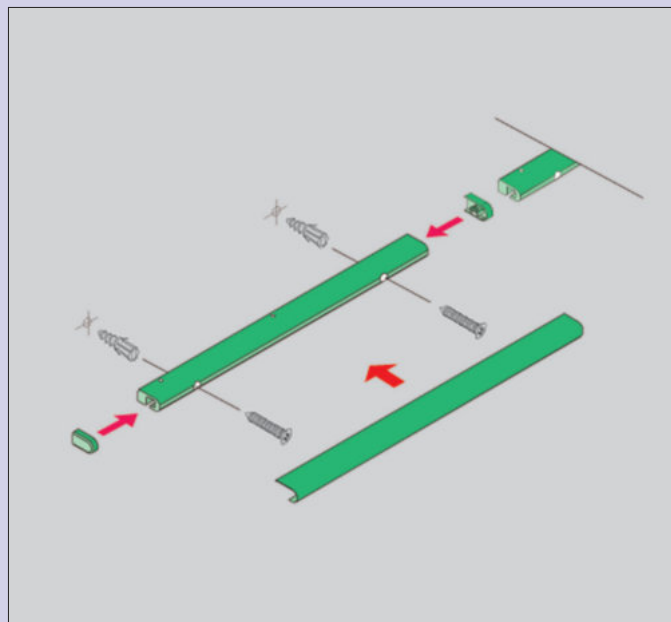
Stainless steel rail tray



Wide.
— 200 x 450 x 160 mm (H x W x D)

8048018 stainless steel

110.92 €



Linero 2000

Innovation in design and functionality.

Functionality and shapely design unobtrusively place the recess in the foreground, making kitchen work a unique pleasure. The varied elements of the Linero 2000 Systems and the novel suspension in the profile strip enable individual placement for very personal recess design.



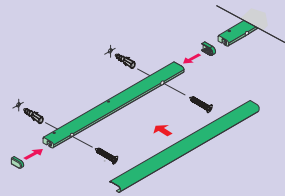
Linero 2000 complete set-1

Rail system. incl. accessories. Set consisting of:

- 1 profile strip set (1 strip L 1200 mm, 2 end pieces, 1 connector) (8047104)
- 1 hook strip (6-fold, L 380 mm) (8047106)
- 1 roll holder (3-level) (8047108)
- without decoration

8047130 stainless steel coloured

325.84 €



Linero 2000 profile strips set

Rail system.

Set consisting of:

- 1 x profile strip
- 2 x end pieces
- 1 x connector plus screws and dowels

8047102	stainless steel coloured, L 600 mm	62.02 €
8047103	stainless steel coloured, L 900 mm	76.05 €
8047104	stainless steel coloured, L 1200 mm	85.80 €
8047105	stainless steel coloured, L 1500 mm	98.99 €



Linero 2000 hook strip

6-fold.

8047106	stainless steel coloured, L 380 mm	44.87 €
----------------	------------------------------------	----------------



Linero 2000 cloth strip

1-fold.

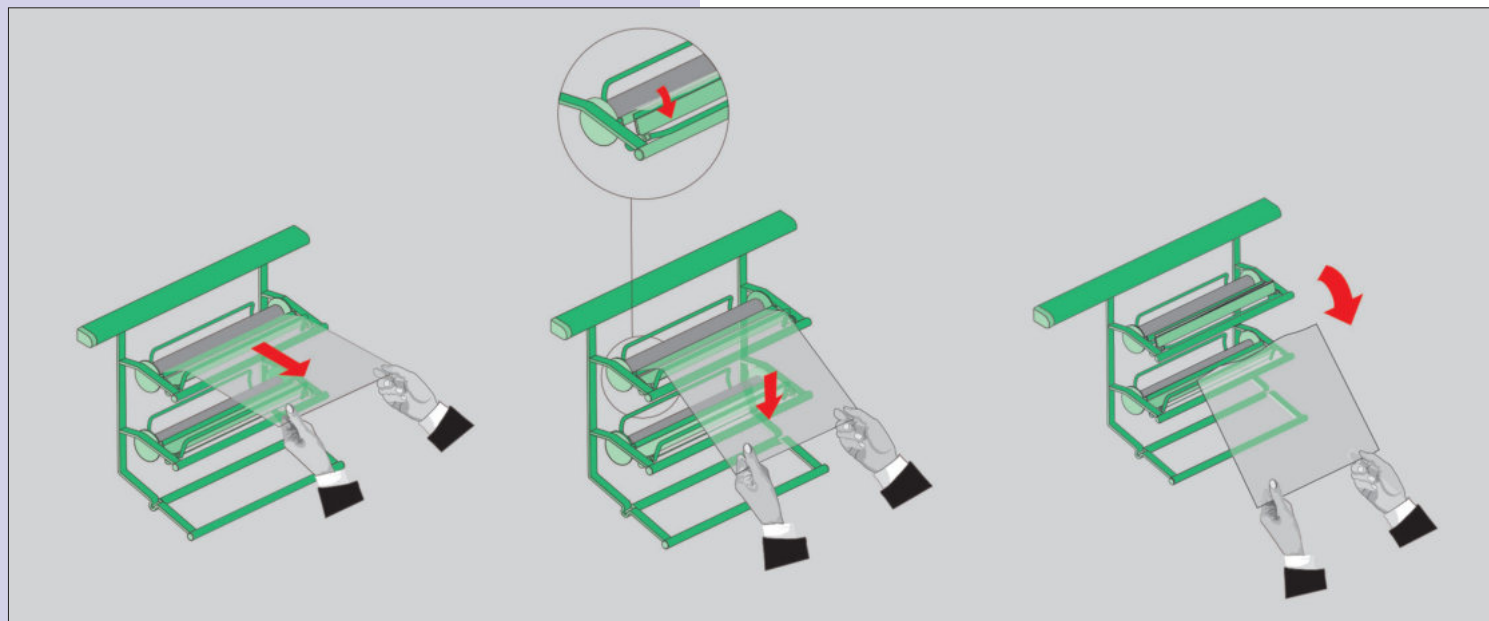
8047107	stainless steel coloured, L 571 mm	39.92 €
----------------	------------------------------------	----------------



Linero 2000 universal tray

— 271 x 440 x 150 mm (H x W x D)

8047110	stainless steel coloured	110.76 €
----------------	--------------------------	-----------------



Linero 2000 roll holder

Three levels, with tear-off attachment for aluminium foil and cling film.
— 305 x 352 x 150 mm (H x W x D)

8047108 stainless steel coloured

217.82 €



Linero 2000 paper roll holder

For household rolls.
— 260 x 352 x 150 mm (H x W x D)

8047109 stainless steel coloured

65.29 €



Linero 2000 spice rack

Two levels, for bottles and pots up to Ø 59 mm and ca. 110 mm height.
— 271 x 380 x 80 mm (H x W x D)

8047111 stainless steel coloured

137.73 €



Linero 2000 knife holder

The knife block itself is made of plastic and holds 5 knives. It is attached to the metal frame by magnets which hold the knife block firmly in place. The knives can be removed from the left or the right.
— 256 x 352 x 150 mm (H x W x D)

8047112 stainless steel coloured/black matt

126.05 €



Linero 2000 holder for dishwashing paraphernalia

— 271 x 505 x 150 mm (H x W x D)

8047123 stainless steel coloured

139.50 €



Linero K 16 set

Rail system.

- tube Ø 16 mm
- length of the bracket 50 mm

Set consisting of: 1 tube, 2 brackets, 2 end pieces, 5 S-hooks

8047401 stainless steel coloured, L 600 mm **109.83 €**

8047402 stainless steel coloured, L 1200 mm **129.58 €**



Linero K 16 tube straight

- tube Ø 16 mm

8047403 stainless steel coloured, L 600 mm **35.55 €**

8047404 stainless-steel coloured, L 1200 mm **67.98 €**



Linero K 16 wall-mounted holders

- height 50 mm

8047405 stainless steel coloured **38.07 €**



Linero K 16 tube connectors

For tube Ø 16 mm.

8047007 grey **2.94 €**



Linero K 16 end piece

For tube Ø 16 mm.

8047406 stainless steel coloured

16.64 €

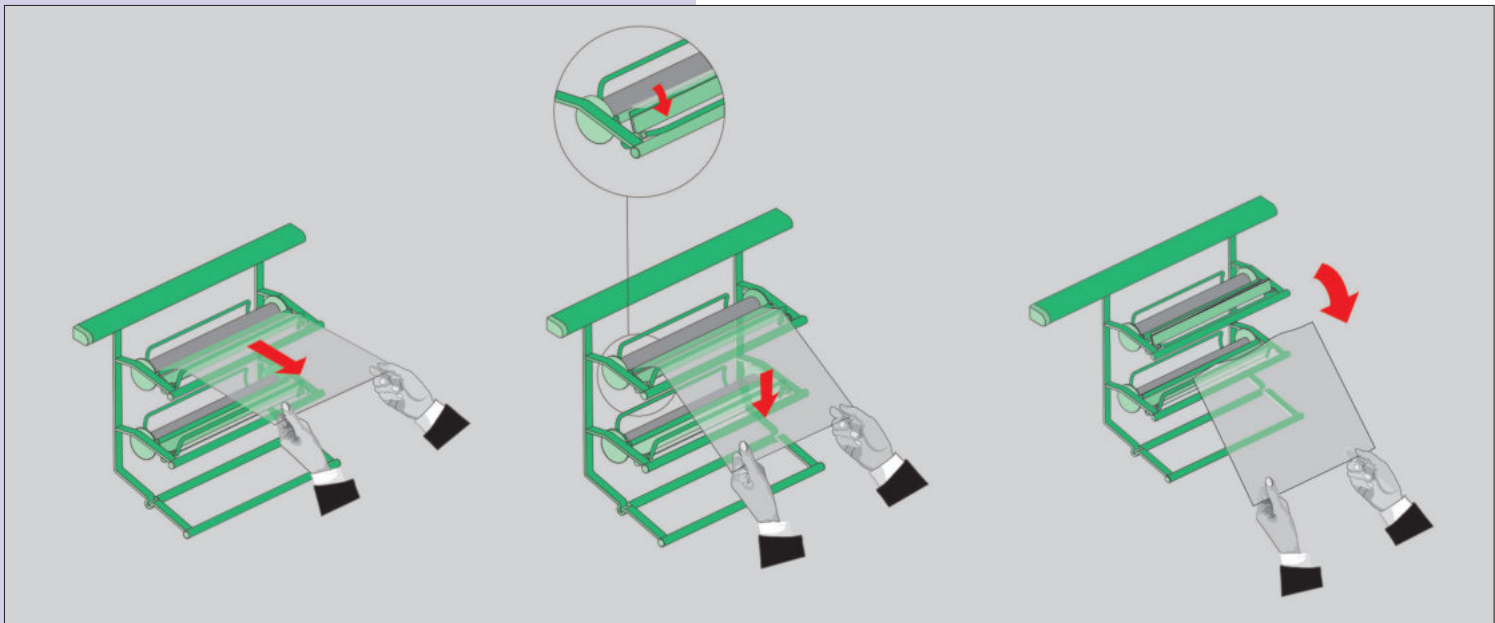


Linero K 16 S-hooks

1-fold.

8047408 stainless steel coloured

6.64 €



Linero K 16 roll holder

Three level, with tear-off edge for aluminium foil and cling film.
— 390 x 325 x 155 mm (H x W x D)

8047410 stainless steel coloured

245.71 €



Linero K 16 paper roll holder 1

1-fold. For household rolls.
— 180 x 325 x 152 mm (H x W x D)

8047411 stainless steel coloured

63.28 €



Linero K 16 paper roll holder 2

Three level, with tear-off edge for aluminium foil and cling film.
— 365 x 325 x 155 mm (H x W x D)

8047412 stainless steel coloured

188.99 €



Linero K 16 multi-purpose tray

— 150 x 455 x 185 mm (H x W x D)

8047415 stainless steel coloured

107.98 €



Linero K 16 spice rack

Two level.
— 275 x 350 x 90 mm (H x W x D)

8047417 stainless steel coloured

65.97 €

Rail and shelf systems

transFORM

Wall slats and vertical structures are an absolute trend at the moment. Here is the innovative solution: take a basic profile and a cover profile and not only slatted walls but also niche systems, complete wall panelling, solitary shelf units and wall shelves can be configured with a high degree of flexibility and versatility.



transFORM rail system

transFORM offers additional functionality through the option of illuminating both sides of the profiles with 8 mm LED strips and, when installed horizontally as a niche system, attaching various sliding functional elements. These include the following modules: a tray with a removable box (for storing small utensils) and also without a box, a tray for a tablet or smartphone, a spice rack, a bottle rack, a bottle and spice rack, a kitchen roll holder and a glass holder, a universal tubular pot, hook strips and a power box with two sockets.

The profile systems are characterised by variety, versatility and numerous possible applications. The transFORM basic profile is available in the lengths 1800 and 2400 mm, as is the matching trapezoidal cover profile with black textured, powder-coated finish.

transFORM shelf holder

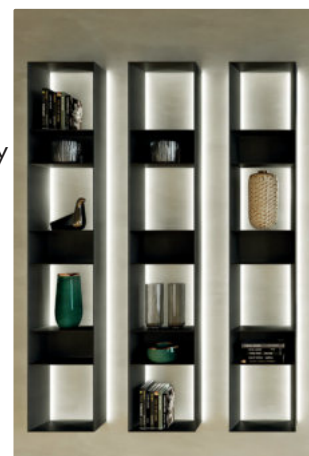
The transFORM shelf system is a particularly extravagant eye-catcher. The groove on both sides of the base profile allows the integration of 8 mm LED strips, which creates a stylish ambience. The basic profile is fitted with shelf holders for 200 mm deep wooden



shelves or sheet metal shelves (set incl. holder). The supports can also be used when configuring slatted walls to hold wall shelves (see above).

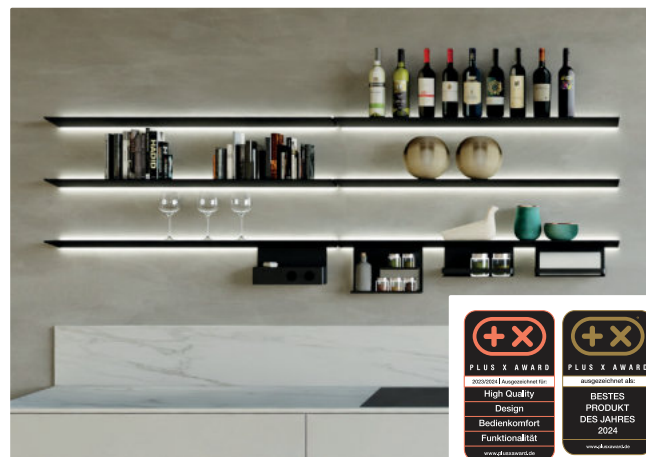
transFORM solitary shelf unit

The solitary shelf units are particularly eye-catching. They are 180 mm deep, available in seven different heights and can also be illuminated. The alternating open and closed shelf compartments give the shelves a contemporary and distinctive look with a high recognition value. The three smallest shelves can also be integrated into the niche rail.



transFORM wall shelf

The wall shelf is available in the lengths 600, 900, 1200 and 1500 mm. The functional elements of the rail system can also be attached to these wall shelves. The wall shelf can also be illuminated on both sides with 8 mm LED stripes.





transFORM

The system transFORM with its matt black powder-coated surface is characterised by its extreme flexibility and versatility. A basic profile and a trapezoidal cover profile can be used to create slatted walls, niche systems, solitary shelves and wall shelves. Horizontally and vertically. For the kitchen and living room. The system offers additional functionality through the option of illuminating the profiles with commercially available 8 mm LED strips and, when mounted horizontally, being able to hook in various sliding functional elements.



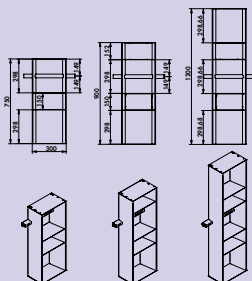
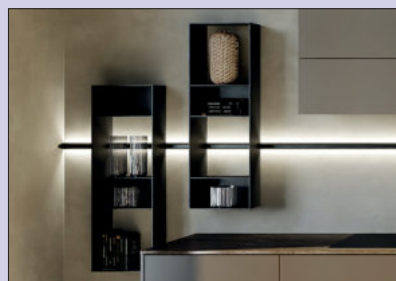
transFORM profile

Black matt, powder-coated.

Set consisting of:

- basic profile and cover profile (end caps and screws included)

8041214	L 900 mm	133.61 €
8041215	L 1200 mm	147.06 €
8041216	L 1500 mm	167.23 €
8041245	L 1800 mm	201.68 €
8041246	L 2400 mm	254.54 €

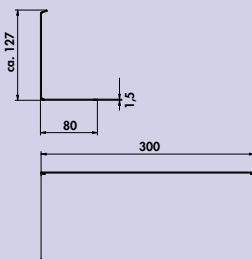


transFORM add-on unit

Add-on unit. Integration with the transFORM profile set.

- black matt, powder-coated
- grooves on both sides of the basic profile to accommodate 8 mm LED strips
- simple and quick installation
- load bearing capacity approx. 50 kg/qm

8041217	750 x 300 x 180 mm (H x W x D)	847.90 €
8041218	900 x 300 x 180 mm (H x W x D)	1070.59 €
8041219	1200 x 300 x 180 mm (H x W x D)	1344.54 €

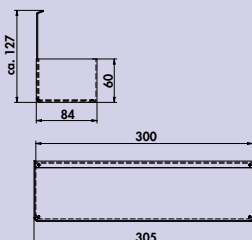


transFORM tray 1

L-shaped.

- powder-coated
- 120 x 300 x 80 mm (H x W x D)

8041220	black matt	56.72 €
---------	------------	---------

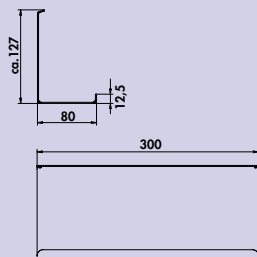
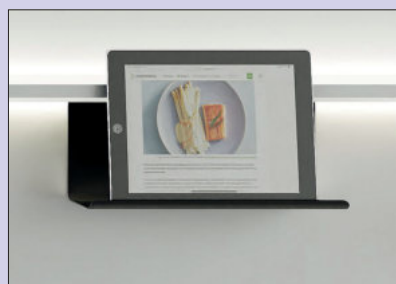


transFORM tray 2

With removable box.

- powder-coated
- 120 x 300 x 84 mm (H x W x D)

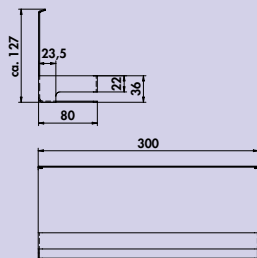
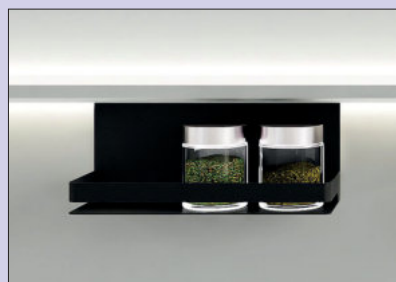
8041221	black matt	109.24 €
---------	------------	----------



transFORM tray 3

For a tablet, mobile phone, cookbook, etc. With ledge for a secure stand.
 – powder-coated
 – 120 x 300 x 80 mm (H x W x D)

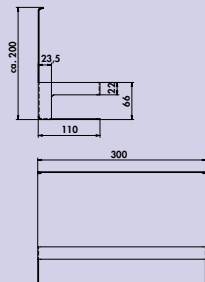
8041222 black matt 56.72 €



transFORM spice rack

With surround.
 – powder-coated
 – 120 x 300 x 80 mm (H x W x D)

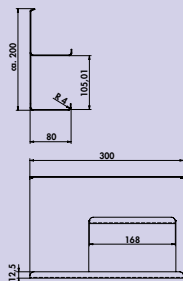
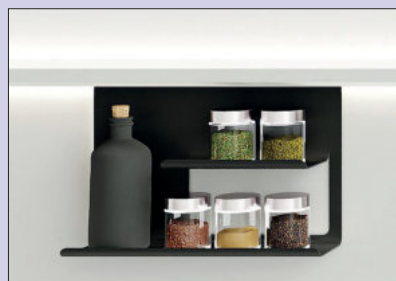
8041223 black matt 78.99 €



transFORM bottle holder

With surround.
 – powder-coated
 – 195 x 300 x 110 mm (H x W x D)

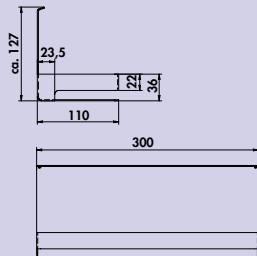
8041224 black matt 83.19 €



transFORM tray 4

Two levels. For bottles and jars.
 – powder-coated
 – 195 x 300 x 80 mm (H x W x D)

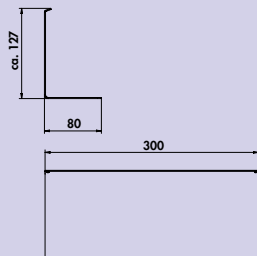
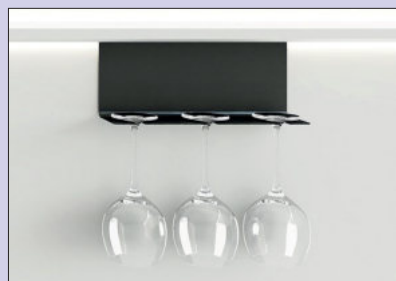
8041225 black matt 78.99 €



transFORM paper roll holder

1-fold. For household rolls.
 – powder-coated
 – 120 x 300 x 110 mm (H x W x D)

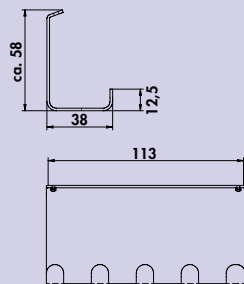
8041226 black matt 78.99 €



transFORM glass holder

For 3 glasses.
 – powder-coated
 – 120 x 300 x 80 mm (H x W x D)

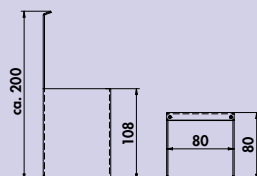
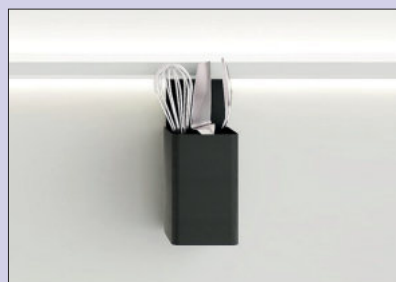
8041227 black matt 50.84 €



transFORM hook strip

- 5-fold.
 – powder-coated
 – 40 x 115 x 40 mm (H x W x D)

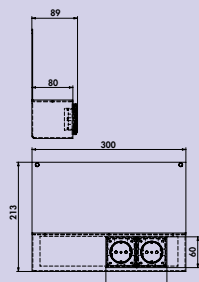
8041228 black matt 35.71 €



transFORM tubular pot

- For storage of kitchen utensils.
 – powder-coated
 – 195 x 75 x 85 mm (H x W x D)

8041229 black matt 75.21 €



transFORM Powerbox

With integrated double socket. Powder-coated.

Powerbox consisting of:

- 2 sockets with earthing contact
- 2000 mm mains connection line
- 120 x 300 x 80 mm (H x W x D)
- cable connection on the back of the box

8041230 black matt 150.84 €



transFORM set 1

Rail system. Powder-coated.

Set consisting of:

- 1 transFORM profile, L 1500 mm (8041216)
- 1 transFORM paper roll holder (8041226)
- 1 transFORM hook strip (8041228)
- 1 transFORM tray 3 (8041222)
- 2 colour-changing LED strips, L 1500 mm, 11.7 W/12 V (7061314)
- 1 FW function converter, 30 W, 6-way distributor (7061271)
- 1 1-channel colour change remote control (7061285)

8041258 black matt

637.49 €



transFORM set 2

Rail system. Powder-coated.

Set consisting of:

- 1 transFORM profile, L 1800 mm (8041245)
- 1 transFORM tray 3 (8041222)
- 1 transFORM bottle holder (8041224)
- 1 transFORM paper roll holder (8041226)
- 2 colour-changing LED strips, L 2600 mm, 20.3 W/12 V (7061300)
- 1 FW function converter, 30 W, 6-way distributor (7061271)
- 1 1-channel colour change remote control (7061285)

8041255 black matt

777.23 €

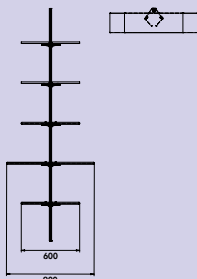


transFORM shelf support

- For mounting the customer's shelves. For fastening to the basic profile.
- locating hole for screw fastening
 - depth 200 mm
 - load bearing capacity approx. 50 kg/qm
 - max. shelf base width with single profile strip 600 mm

Shelves not included in delivery.

8041231 black matt **86.55 €**



transFORM sheet metal shelf set

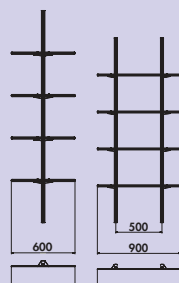
- Black matt, powder-coated.
- load bearing capacity approx. 50 kg/qm
 - with a sheet metal base width of 900mm, two basic profiles are required

Set consisting of:

- sheet metal shelf
- bracket set

8041232 600 x 200 mm (W x D) **154.54 €**

8041233 900 x 200 mm (W x D) **173.11 €**



transFORM set 3

Shelf system. Powder-coated.

Set consisting of:

- 2 transFORM profile, L 1800 mm (8041245)
- 2 transFORM shelf supports (8041231)
- 4 colour-changing LED strips, L 2600 mm, 20.3 W/12 V (7061300)
- 1 FW function converter, 60 W, 6-way distributor (7061273)
- 1 1-channel colour change remote control (7061285)

**Maximum shelf width with single profile strip 600 mm.
Shelves not included in the scope of delivery.**

8041256 black matt

1154.48 €



transFORM set 4

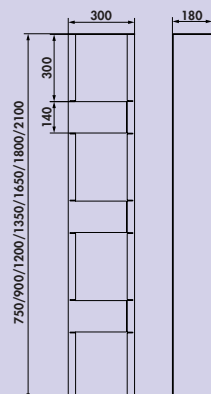
Shelf system. Powder-coated.

Set consisting of:

- 3 transFORM profile, L 2400 mm (8041246)
- 6 colour-changing LED strips, L 2600 mm, 20.3 W/12 V (7061300)
- 2 FW function converter, 60 W, 6-way distributor (7061273)
- 1 1-channel colour change remote control (7061285)

8041254 black matt

1681.22 €

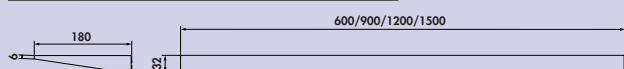


transFORM solitary shelf unit

Shelf system. Black matt, powder-coated.

- grooves on both sides to accommodate 8 mm LED strips (not included in the scope of delivery)
- simple and quick installation
- load bearing capacity approx. 50 kg/qm

8041234	750 x 300 x 180 mm (H x W x D)	726.89 €
8041235	900 x 300 x 180 mm (H x W x D)	957.98 €
8041236	1200 x 300 x 180 mm (H x W x D)	1235.29 €
8041237	1350 x 300 x 180 mm (H x W x D)	1242.02 €
8041238	1650 x 300 x 180 mm (H x W x D)	1344.54 €
8041239	1800 x 300 x 180 mm (H x W x D)	1457.98 €
8041240	2100 x 300 x 180 mm (H x W x D)	1861.34 €



transFORM wall shelf

Shelf system. Black matt, powder-coated.

- grooves on both sides to accommodate 8 mm LED strips (not included in the scope of delivery)
- integration of various slidable functional elements
- simple and quick installation
- load bearing capacity approx. 50 kg/qm

8041241	32 x 600 x 180 mm (H x W x D)	527.73 €
8041242	32 x 900 x 180 mm (H x W x D)	603.36 €
8041243	32 x 1200 x 180 mm (H x W x D)	667.23 €
8041244	32 x 1500 x 180 mm (H x W x D)	723.53 €



Colour change LED strip

For Manubrio and Light profile colour change.
This product contains a light source of energy efficiency class F.

7061300	L 2600 mm, 20.3 W/12 V	98.82 €
7061314	L 1500 mm, 11.7 W/12 V	68.49 €

Optional accessories

7061049	LED connection line, white, L 2000 mm	4.03 €
---------	---------------------------------------	--------



FW function converter

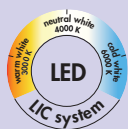
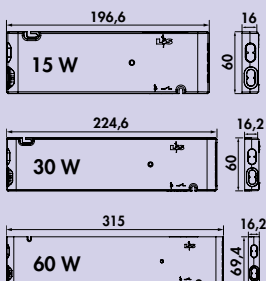


The FW function converter for colour change lighting systems.

- white
- 12 VDC
- max. 36 watt load per slot on the converter
- 2000 mm mains connection line
- switchable by Bluetooth app (module 3) or by optionally available radio remote control

7061286	module 2 (radio), 15 W, 4-way distributor	95.21 €
7061271	module 2 (radio), 30 W, 6-way distributor	121.26 €
7061273	module 2 (radio), 60 W, 6-way distributor	152.69 €

7061287	module 3 (Bluetooth + radio), 15 W, 4-way distributor	127.56 €
7061281	module 3 (Bluetooth + radio), 30 W, 6-way distributor	156.30 €
7061283	module 3 (Bluetooth + radio), 60 W, 6-way distributor	188.66 €



1-channel colour change remote control



- stepless control of the light colour
- dimming function
- auto memory: brightness and light temperature settings are saved
- one controller can be used for various colour change converters
- 8 x 90 x 50 mm (H x L x B)

7061285	white	53.61 €
---------	-------	---------

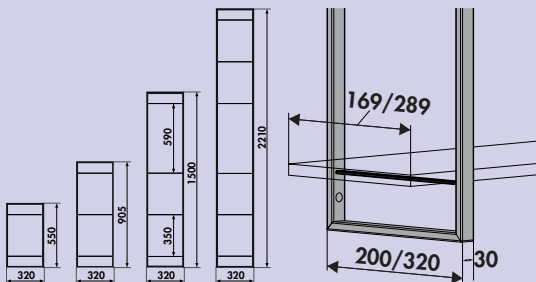
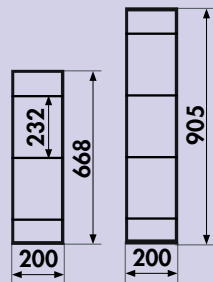
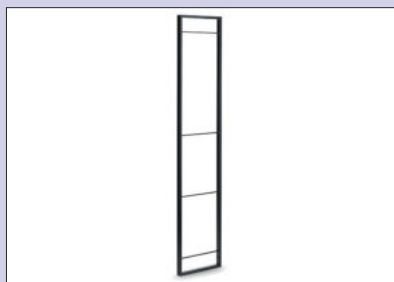


230 volt connecting line



For connecting several FW function converters.

7061284	L 300 mm, white	3.28 €
7061279	L 1000 mm, white	5.46 €



YouK shelving system

For open and contemporary interior design. Black matt.

- material steel
- free-hanging or standing shelf variants
- elements can be freely combined
- quick and easy installation
- one frame element included in each delivery without screws for wall mounting
- 15 kg max. bearing capacity per shelf given even distribution
- **shelves not included in the scope of delivery**

8051150 D 200 mm, H 668 mm, with 3 shelf attachments **98.99 €**

8051151 D 200 mm, H 905 mm, with 4 shelf attachments **116.13 €**

8051152 D 320 mm, H 550 mm, with 2 shelf attachments **91.85 €**

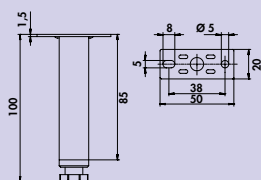
8051153 D 320 mm, H 905 mm, with 3 shelf attachments **116.13 €**

8051154 D 320 mm, H 1500 mm, with 4 shelf attachments **137.73 €**

8051155 D 320 mm, H 2210 mm, with 6 shelf attachments **185.38 €**

Optional accessories

8051156 YouK adjustable foot, black matt **24.29 €**



YouK adjustable foot

For YouK shelving system.

8051156 black matt

24.29 €



Cubo complete sets

Shelf system. Aluminium profiles 18 x 18 mm, powder-coated with fine structure.

Set consisting of:

- 1 x base frame set (8051021)
- 1 x strut set (300/600/900) (8051022–8051024)

Suitable shelf inserts see catalogue 1 pages 658–660/24 EN.

8051036 300 x 300 mm, black matt

250.27 €

8051037 600 x 300 mm, black matt

268.23 €

8051038 900 x 300 mm, black matt

315.72 €





Cubo base frame set

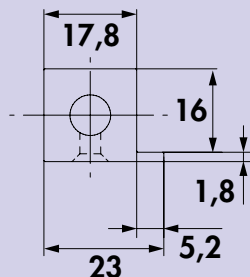
Shelf system. Aluminium profiles 18 x 18 mm, powder-coated with fine structure.
To mount a shelf, a set of struts is also required.

Set consisting of:

- 2 frame profiles 300 x 300 x 18 mm (H x W x D)

8051021 black matt

212.94 €



Cubo strut set 300

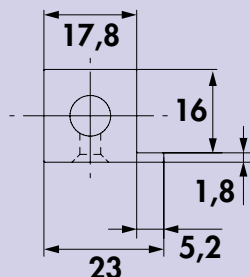
Shelf system. Aluminium profiles 18 x 18 mm, powder-coated with fine structure.

Set consisting of:

- 4 struts L 264 mm for complete shelf dimension of 300 mm
- for inserting plate material of up to 16 mm thickness

8051022 black matt

50.50 €



Cubo strut set 600

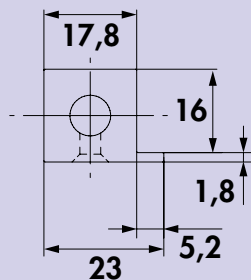
Shelf system. Aluminium profiles 18 x 18 mm, powder-coated with fine structure.

Set consisting of:

- 4 struts L 564 mm for complete shelf dimension of 600 mm
- for inserting plate material of up to 16 mm thickness

8051023 black matt

66.47 €



Cubo strut set 900

Shelf system. Aluminium profiles 18 x 18 mm, powder-coated with fine structure.
Set consisting of:
— 4 struts L 864 mm for complete shelf dimension of 900 mm
— for inserting plate material of up to 16 mm thickness

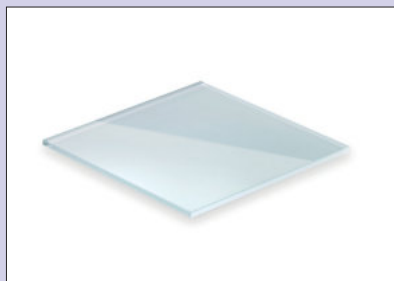
8051024 black matt 105.97 €



Cubo extension frame

Shelf system. Aluminium profiles 18 x 18 mm, powder-coated with fine structure.
— 300 x 300 x 18 mm (H x W x D)

8051025 black matt 128.49 €



Cubo glass plate

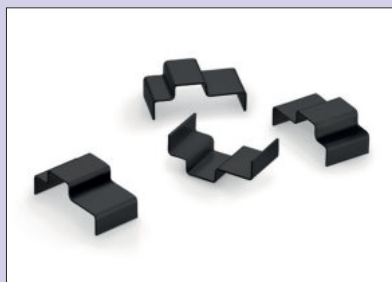
Shelf system. Float glass satinised.
— thickness 4 mm

8051040 for 300 mm width, 262 x 262 mm (W x D) 33.61 €

8051041 for 600 mm width, 562 x 262 mm (W x D) 45.88 €

8051042 for 900 mm width, 862 x 262 mm (W x D) 63.28 €





Cubo clip set

Shelf system. Clamps are reversible for the different heights of the shelves, 4 or 8 mm, if the shelves are meant to be flush with the bottom, only recommended for 300 mm and 600 mm widths.
— 1 PU = 4 pc.

8051029 black, price per PU

6.97 €



Cubo bottle holder 300

Shelf system. Steel, powder-coated with fine structure. Suitable for shelves with 300 mm width.
— 16 x 262 x 262 mm (H x W x D)

8051026 black matt

42.94 €



Cubo glass holder 300

Shelf system. Steel, powder-coated with fine structure. Suitable for shelves with 300 mm width.
— 20 x 262 x 262 mm (H x W x D)

8051027 black matt

42.94 €





Cubo shelf

Shelf system. Steel, powder-coated. For use as a flat shelf or as a tray.
— 16 x 262 mm (H x D)

8051028	262 mm for 300 mm width, black matt	35.63 €
8051049	562 mm for 600 mm width, black matt	55.13 €
8051050	862 mm for 900 mm width, black matt	68.91 €



Cubo rear panel set 600

Shelf system. Steel, powder-coated with fine structure.

Set consisting of:

- 4 struts L 564 mm
- metal plate rear panel 263 x 561 mm (H x W)

The matching base frame set see catalogue 1 657-658/24 EN.

8051031	600 mm, black matt	150.00 €
----------------	--------------------	-----------------



Cubo rear panel set 900

Shelf system. Steel, powder-coated with fine structure.

Set consisting of:

- 4 struts L 864 mm
- metal plate rear panel 263 x 861 mm (H x W)

The matching base frame set see catalogue 1 657-658/24 EN.

8051032	900 mm, black matt	211.09 €
----------------	--------------------	-----------------



Cubo rear panel lighting set

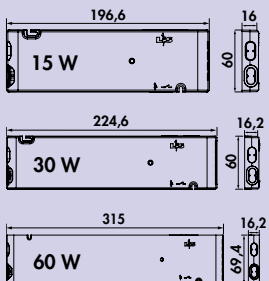
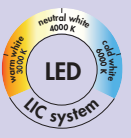


Triangular colour change LED lamp with magnetic fixation illuminating downwards. With 300/600/900 mm Cubo rear panels sets.

- 7.8 watt per metre
 - continuous control of the light colour from **2700 K** warm white to **6500 K** cold white
 - memory function: the last setting is stored
 - dimmer function: brightness continuously dimmable
 - max. 85 lumen/watt at **6500 K** cold white
 - 1800 mm supply line with mini-plug-in system
 - cable outlet rear right
 - LIC LED system compatible
 - **converters are not included in the scope of delivery**
- This product contains a light source of energy efficiency class F.**

Further converters and switches can be found in catalogue 1 pages 268–270/24 EN.

8051134	incl. 600 mm Cubo rear panel, black matt	201.55 €
8051135	incl. 900 mm Cubo rear panel, black matt	277.06 €



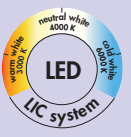
FW function converter



The FW function converter for colour change lighting systems.

- white
- 12 VDC
- max. 36 watt load per slot on the converter
- 2000 mm mains connection line
- **switchable by Bluetooth app (module 3) or by optionally available radio remote control**

7061286	module 2 (radio), 15 W, 4-way distributor	95.21 €
7061271	module 2 (radio), 30 W, 6-way distributor	121.26 €
7061273	module 2 (radio), 60 W, 6-way distributor	152.69 €
7061287	module 3 (Bluetooth + radio), 15 W, 4-way distributor	127.56 €
7061281	module 3 (Bluetooth + radio), 30 W, 6-way distributor	156.30 €
7061283	module 3 (Bluetooth + radio), 60 W, 6-way distributor	188.66 €



1-channel colour change remote control



- stepless control of the light colour
- dimming function
- auto memory: brightness and light temperature settings are saved
- one controller can be used for various colour change converters
- 8 x 90 x 50 mm (H x L x B)

7061285	white	53.61 €
---------	-------	---------



230 volt connecting line



For connecting several FW function converters.

7061284	L 300 mm, white	3.28 €
7061279	L 1000 mm, white	5.46 €

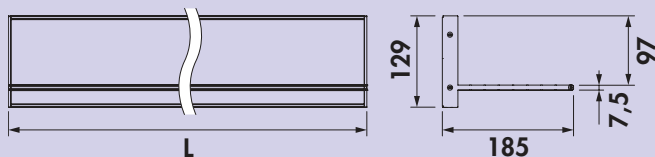
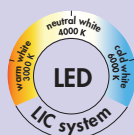
ACCOMODA®

Shelf supports

Concise, but subtly
in the background



■ Liente colour change LED wall shelf	Page 664–665
Kaiman	Page 666
Prior	Page 666
Two	Page 667
Moon	Page 668
Akro	Page 669
Glass shelf	Page 669



Liente colour change LED wall shelf



Shelf system. Aluminium housing. Lighting above and below, 2 mounting variants.

- 12 V, IP20
- stepless control of the light colour from **2700 K** warm white to **6500 K** cold white
- memory function: the last setting is saved
- dimming function: brightness continuously dimmable
- max. 85 lumen/watt at **6500 K** cold white
- **the 15 and 30-watt converter can be integrated in the wall shelf**
- 200 mm supply cable with mini-plug-in system
- rear panel height 129 mm
- depth 185 mm
- cable outlet rear left
- bearing capacity* approx. 1 kg/100 mm
- incl. angle adjustment
- LIC LED system compatible

This product contains a light source with the energy efficiency class G.

The matching colour change function converters and remote controls can be found in catalogue 1 page 268–270/24 EN.

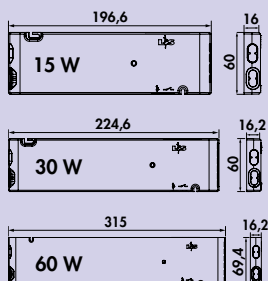
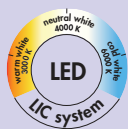
*The bearing capacity depends on the wall structure, suitable mounting material for the respective wall type needs to be used.

7062393 L 600 mm, 13.8 W, stainless steel coloured	262.35 €
7062394 L 900 mm, 21 W, stainless steel coloured	362.02 €
7062395 L 1200 mm, 28.2 W, stainless steel coloured	453.61 €

7062390 L 600 mm, 13.8 W, black matt	278.49 €
7062391 L 900 mm, 21 W, black matt	393.45 €
7062392 L 1200 mm, 28.2 W, black matt	465.29 €

Optional accessories

7061049 LED connection line, white, L 2000 mm	4.03 €
--	---------------



FW function converter



The FW function converter for colour change lighting systems.

- white
- 12 VDC
- max. 36 watt load per slot on the converter
- 2000 mm mains connection line
- **switchable by Bluetooth app (module 3) or by optionally available radio remote control**

7061286 module 2 (radio), 15 W, 4-way distributor	95.21 €
7061271 module 2 (radio), 30 W, 6-way distributor	121.26 €
7061273 module 2 (radio), 60 W, 6-way distributor	152.69 €
7061287 module 3 (Bluetooth + radio), 15 W, 4-way distributor	127.56 €
7061281 module 3 (Bluetooth + radio), 30 W, 6-way distributor	156.30 €
7061283 module 3 (Bluetooth + radio), 60 W, 6-way distributor	188.66 €

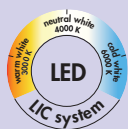


1-channel colour change remote control



- stepless control of the light colour
- dimming function
- auto memory: brightness and light temperature settings are saved
- one controller can be used for various colour change converters
- 8 x 90 x 50 mm (H x L x B)

7061285 white	53.61 €
----------------------	----------------



4 channel colour change remote control



- switching on/off
- dimming function
- stepless control of the light temperature and colour in the colour range white
- indicator LED for the light colour
- Auto memory: brightness and light temperature settings are retained
- all functions can be set individually for up to four light groups
- two light scenes can be stored
- 150 x 38 x 7 mm (L x B x H)

7061276 white	72.77 €
----------------------	----------------

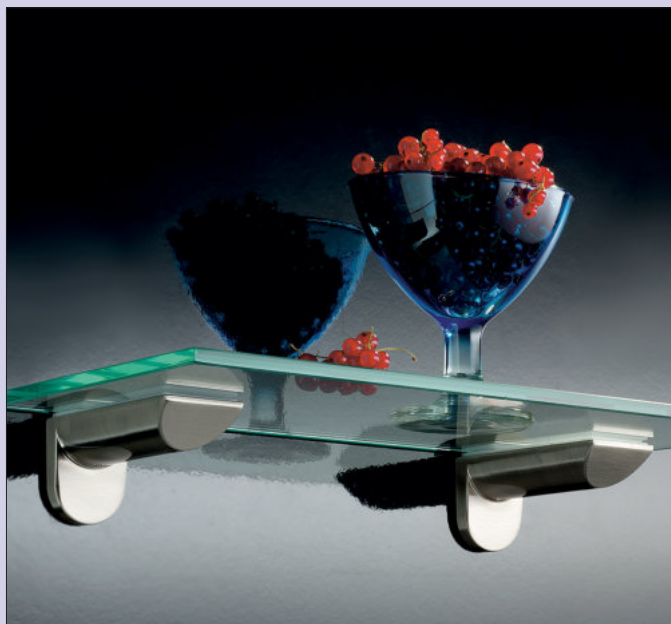


230 volt connecting line



For connecting several FW function converters.

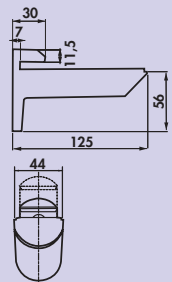
7061284 L 300 mm, white	3.28 €
--------------------------------	---------------



Kaiman

Brings function and elegance under each shelf.

No problem with slanted walls: Integrated mechanics enable uncomplicated tilt adjustment of "Kaiman".



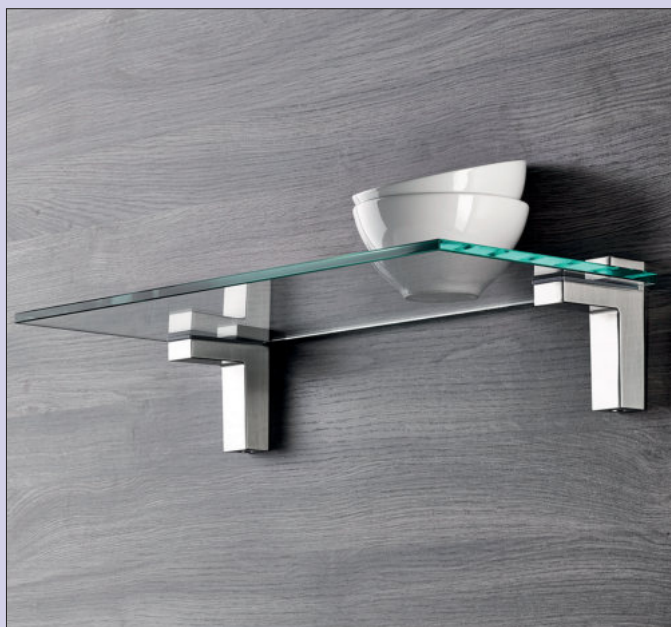
Kaiman

Shelf support.

- for plate thickness of 7–41 mm
- load-bearing capacity ca. 25 kg/supports for a depth of 320 mm
- bracket length 125 mm
- **only available in units of 2 pieces**

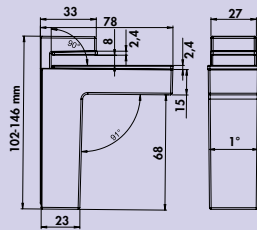
See catalogue 1 page 669/24 EN for glass shelves.

3021078 stainless steel coloured, price per PU	74.20 €
3021092 black matt, price per PU	58.66 €



Prior

In open shelf areas, this variable wall bracket thrills with its nicely shaped appearance and secure load bearing capacity.



Prior

Shelf support.

- for plate thickness of 8–50 mm
- load-bearing capacity ca. 8 kg/support for a depth of 320 mm
- bracket length 78 mm
- **only available in units of 2 pieces**

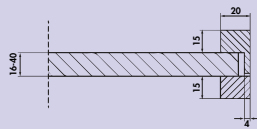
See catalogue 1 page 669/24 EN for glass shelves.

3021032 stainless steel coloured, price per PU	63.87 €
3021035 black matt, price per PU	50.17 €



Two

The shelf support Two sets visual design highlights in the kitchen and in the living room. It convinces through straightforwardness and elegance.



Two

Shelf support. Two-piece, made of aluminium, powder-coated with fine structure.

- for plate thickness of 16–40 mm, max. depth 200 mm
- 46–70 x 20 mm (H x T)
- load-bearing capacity* ca. 15 kg
- profile thickness 20 x 15 mm
- not suitable for glass shelves
- delivery without shelf

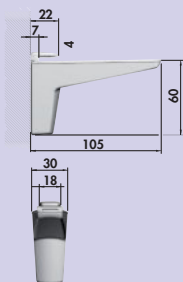
*The load-bearing capacity depends on the wall condition. Suitable mounting material for the respective wall type is to be used (not included in scope of delivery).

3021022 W 600 mm, matt black	88.24 €
3021023 W 900 mm, matt black	113.19 €



Moon

Thanks to the innovative plug-clamp-function, the shelf support Moon has a good grip on the shelf and allows it to float stylishly in front of the wall. This shelf support can be used to mount 4–25 mm thick shelves.



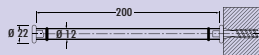
Moon

Shelf support.

- for plate thickness of 4–25 mm
- load-bearing capacity ca. 50 kg/pair of supports for a depth of 320 mm
- bracket length 105 mm
- **only available in units of 2 pieces**

See catalogue 1 page 669/24 EN for glass shelves.

3021090 stainless steel coloured, price per PU	35.38 €
3021091 black matt, price per PU	35.38 €



Akro



Shelf support.

- the glass plate rests vibration-free on two rubber rings
- the projection amounts to 5 mm
- depth 200 mm
- load-bearing capacity ca. 85 kg/qm glass shelf with load distributed evenly
- maximum distance between supports 700 mm
- wall mounting with dowel
- **only available in units of 2 pieces**

See catalogue 1 page 669/24 EN for glass shelves.

3021009 stainless steel matt, price per PU

66.47 €



Glass shelf

Optional accessories for Spruzzo (3021132, 3021134), Kaiman (3021078, 3021092), Prior (3021032, 3021035), Akro (3021009) and Moon (3021090, 3021091).

- high-quality glass plates with polished edges
- thickness 8 mm
- depth 200 mm

3021013	clear glass, L 480 mm	42.52 €
3021014	clear glass, L 580 mm	45.71 €
3021026	clear glass, L 880 mm	67.14 €
3021124	clear glass, L 1140 mm	74.20 €
3021113	satinised glass, L 480 mm	62.69 €
3021114	satinised glass, L 580 mm	69.83 €
3021126	satinised glass, L 880 mm	98.91 €
3021125	satinised glass, L 1140 mm	113.61 €

ACCOMODA®

Suspended shelf systemes

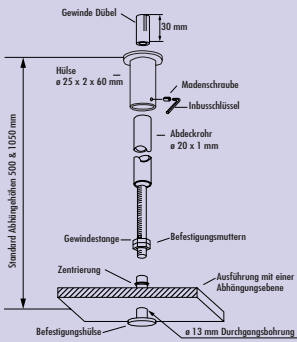
Fixed, versatile and flexible



■ Varia
Wire suspension

Page 672

Page 673



Varia

Suspended shelf system.

- stainless steel coloured
- incl. installation set for concrete and solid brick ceilings
- can be shortened
- load bearing capacity ca. 90 kg
- tube Ø 20 mm
- drill Ø 13 mm

8046201 L 500 mm, max. suspension height 460 mm **85.29 €**

8046207 L 1050 mm, max. suspension height 1010 mm **117.39 €**

Varia intermediate ring set

Installation set for further levels.
2 spacer rings and 2 PVC disks transparent.

8046210 stainless steel coloured **56.39 €**



Varia set for suspended ceilings

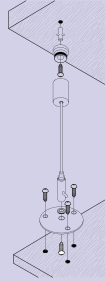
Installation set for suspended ceilings.

Set consisting of:

- 1 hanger bolt
- 1 multi-purpose dowel
- 1 connecting nut
- 1 metal dowel
- 1 hexagonal nut

8046212 **16.30 €**





Wire suspension

Suspension made of stainless steel wire including zinc-coated bracket.
Length is continuously adjustable and self-locking.
— load bearing capacity ca. 20 kg

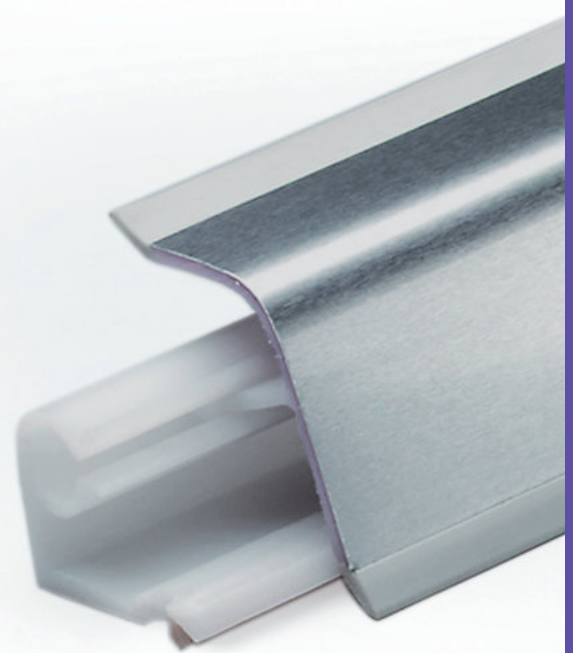
8046095 L 1000 mm

44.71 €

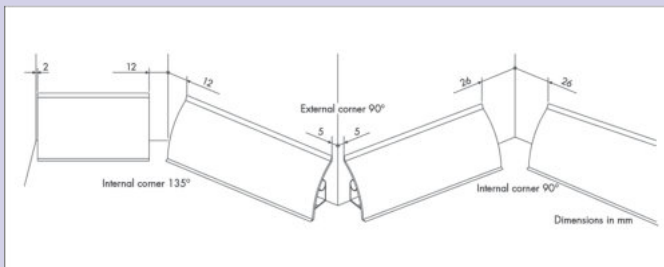
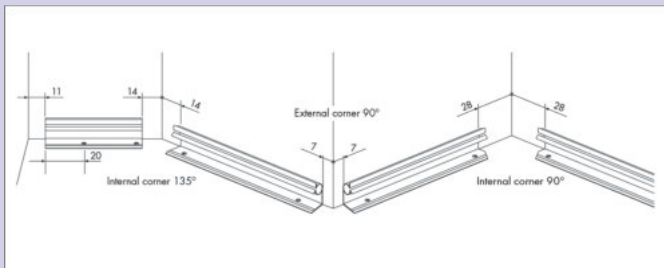
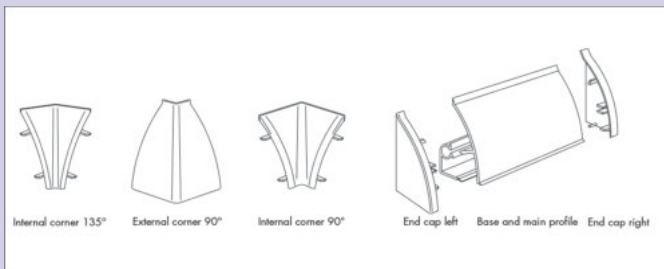
ACCOMODA®

Profiles

Secure joints for all
corners and edges



■ System 9 Dessino	Page 676–677
System 7 Classic	Page 678–679
System Piccolo 14	Page 680
System sealing profile	Page 681

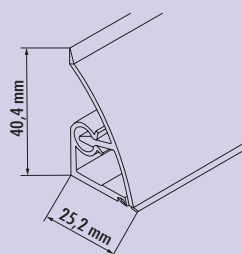


System 9 Dessino wall joint profile

Installation instruction:

1. Cut base profile element to length at right angles as measured.
2. Cut main profile to the same length.
3. Plug the internal corner 90° onto the main profile and begin assembly in the corresponding corner. Plug-in the corner part before inserting the base profile.
4. Plug-in the corner caps.

In this manner, assemble the successive segments – and measure as often as necessary.



System 9 Dessino wall joint profile

Standard length per profile 5.06 m.
– 40 x 25 mm (H x D)

Only available in units of 25.30 m.

9017002 stainless steel coloured, price per PU

377.31 €



System 9 Dessino end caps right

Available only in PU of 10 pcs.

9017025 stainless steel coloured, price per PU

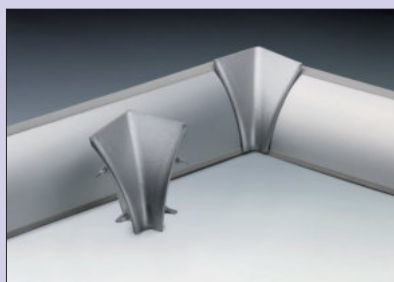
54.12 €



System 9 Dessino end caps left

Available only in PU of 10 pcs.

9017026 stainless steel coloured, price per PU **54.12 €**



System 9 Dessino inside corners 90°

Available only in PU of 10 pcs.

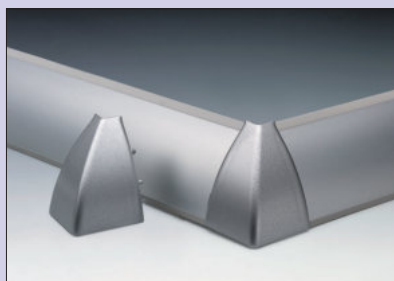
9017027 stainless steel coloured, price per PU **65.38 €**



System 9 Dessino inside corners 135°

Available only in PU of 10 pcs.

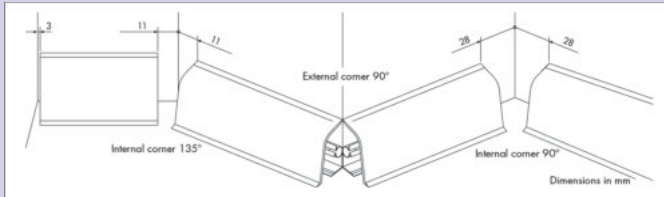
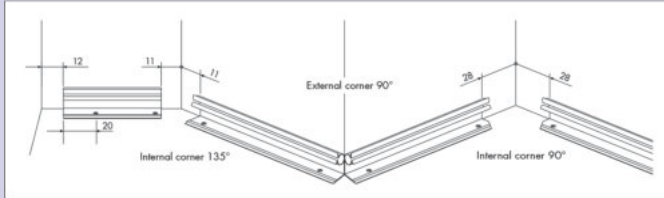
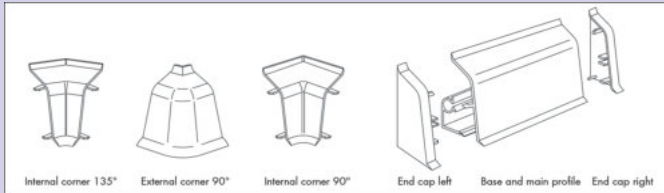
9017028 stainless steel coloured, price per PU **71.01 €**



System 9 Dessino outside corners 90°

Available only in PU of 10 pcs.

9017029 stainless steel coloured, price per PU **71.01 €**

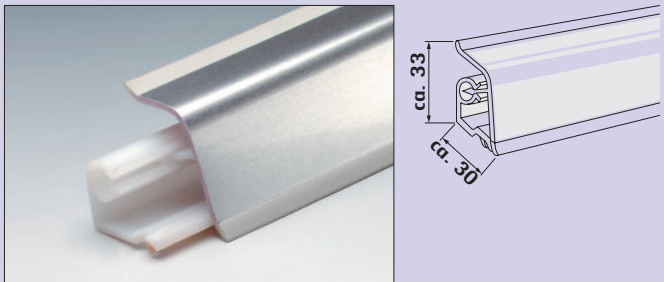


System 7 Classic wall joint profile

Installation instruction:

1. Cut base profile element to length at right angles as measured.
2. Cut main profile to the same length.
3. Plug the internal corner 90° onto the main profile and begin assembly in the corresponding corner. Plug-in the corner part before inserting the base profile.
4. Plug-in the corner caps.

In this manner, assemble the successive segments – and measure as often as necessary.



System 7 Classic wall joint profile

Standard length per profile 5.06 m.
– 33 x 30 mm (H x D)

Only available in units of 25.30 m.

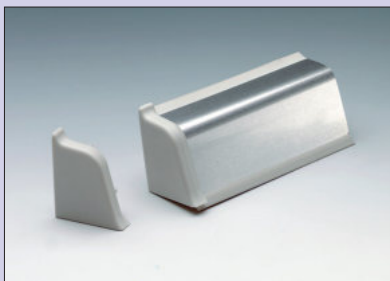
9012051 stainless steel coloured, price per PU **363.03 €**



System 7 Classic end caps right

Available only in PU of 25 pcs.

9012064 grey to stainless steel coloured, price per PU **57.73 €**



System 7 Classic end caps left

Available only in PU of 25 pcs.

9012065 grey to stainless steel coloured, price per PU **57.73 €**



System 7 Classic internal corners 90°

Available only in PU of 25 pcs.

9012067 grey to stainless steel coloured, price per PU **81.93 €**



System 7 Classic internal corners 135°

Available only in PU of 10 pcs.

9012069 grey to stainless steel coloured, price per PU

39.58 €



System 7 Classic external corners 90°

Available only in PU of 10 pcs.

9012071 grey to stainless steel coloured, price per PU

34.71 €

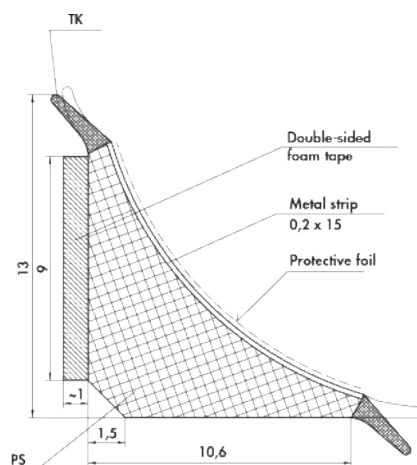


System Piccolo 14 wall joint profile

Entirely new methods are used by the universal profile Piccolo: high strength gluing technology, combined with effective sealing lips, ensure sensationally fast installation times without compromising on functionality.

Pull off the protective film from the adhesive tape, apply with gentle pressure, in a gliding motion, beginning from one side, piece by piece – finished. If no variety in decorations is required, the universal version in genuine aluminium saves warehousing costs. So the benefits of Piccolo immediately take effect. Therefore, this universal profile should not be lacking in any range.

Piccolo is a sealing profile, a decorative profile, a profile with a function and design! It is able to replace a silicone joint in many places: in recesses in the kitchen and bathroom, but also in the overall living area, in offices, in shops, for hobbies and camping.



System Piccolo 14 wall joint profiles

Set consisting of:
– 5 m profile as roll and 2 sets of accessories

9012081 stainless steel coloured, price per set

55.80 €



System Piccolo 14 set of accessories

Set consisting of:
– 1 end cap right
– 1 end cap left
– 1 internal corner 90°
– 1 internal corner 90° semi-circular shaped for insertion of the profile in vertical position
– 1 outside corner
– 1 internal corner 135°

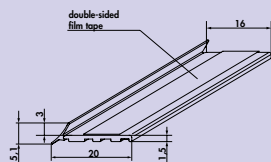
9012083 grey for stainless steel coloured, price per set

5.21 €



System sealing profile

Fully transparent PVC niche sub-profile, which is fixed by means of tape to the niche bottom and then set on the plate along with the niche, thus a durable silicone replacement.



System sealing profile

For niche walls 16 mm.
— profile length 3000 mm rolled

9015049 transparent, price per piece

11.43 €

